

# TEGRRYS

Moving closer to your goal together.



# ON ROAD APPLICATIONS

# VERSATILITY, EFFECTIVE MILEAGE AND SAFETY

## TE48-S



## TE48-D



## TE48-T



SIZE	LOAD INDEX / SPEED CODE	REGULATION EU 2020/740 Label parameters				
		(1)	(2)	(3)	Rolling noise	3PMSF
215/75 R 17.5	126/124 M	D	B	A	69 dB	✓
295/80 R 22.5	154/149 M	C	B	A	67 dB	✓
315/70 R 22.5	156/150 L (154/150M)	C	A	B	72 dB	✓
315/80 R 22.5	156/150 L (154/150M)	C	A	B	71 dB	✓

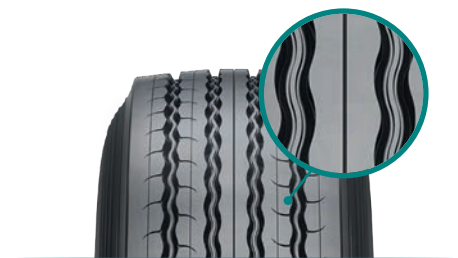
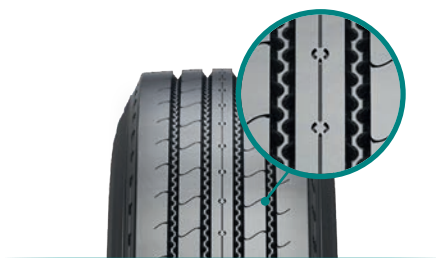
SIZE	LOAD INDEX / SPEED CODE	REGULATION EU 2020/740 Label parameters				
		(1)	(2)	(3)	Rolling noise	3PMSF
215/75 R 17.5	126/124 M	D	B	A	70 dB	✓
295/80 R 22.5	152/148 M	D	B	A	73 dB	✓
315/70 R 22.5	154/150 L (152/148M)	D	A	B	75 dB	✓
315/80 R 22.5	156/150 L (154/150M)	D	B	A	73 dB	✓

SIZE	LOAD INDEX / SPEED CODE	REGULATION EU 2020/740 Label parameters				
		(1)	(2)	(3)	Rolling noise	3PMSF
215/75 R 17.5	135/133 J	D	B	A	69 dB	✓
385/65 R 22.5	160 K (158 L)	C	A	B	72 dB	✓

- **Adaptable Tread Pattern Technology:** variable tread geometry during tyre life guarantees robustness and **extended tyre life.**
- Stone ejectors on shoulder grooves prevent stone trapping whilst **preserving the tread depth** and increasing the tyre life.
- Waved sipes **enhance grip** whilst **limiting noise generation.**

- Robust tread pattern designed to maximize traction whilst reducing footprint movements **enhancing even wear.**
- Side grooves cavities to:
  - **prevent stone trapping** for longer tread pattern life;
  - **maximize traction.**
- Optimized tread pattern which **prevents chipping and chunking.**

- Optimized groove geometry **enhances even wear.**
- Stone ejectors on shoulder grooves **extend tyre life.**
- Waved sipes **promote grip** whilst **limiting noise generation.**



(1) Fuel efficiency class

(2) Wet grip class

(3) External rolling noise class

Snow grip / 3PMSF marking

Allowed

# ON-OFF ROAD APPLICATIONS

# ROBUSTNESS, GRABBING, SLOW WEARING

## TE68-S



## TE68-D (22.5")



SIZE	LOAD INDEX / SPEED CODE	REGULATION EU 2020/740 Label parameters				
		(1)	(2)	(3)		
13 R 22.5	156/150 K (154/150L)	D	A	A	70 dB	✓
315/80 R 22.5	156/150 K	C	A	B	74 dB	✓

SIZE	LOAD INDEX / SPEED CODE	REGULATION EU 2020/740 Label parameters				
		(1)	(2)	(3)		
13 R 22.5	156/150 K (154/150L)	D	B	B	74 dB	✓
315/80 R 22.5	156/150 K	D	B	B	74 dB	✓

- **Robust tread pattern** suitable for the toughest conditions.
- Stone ejectors on shoulder grooves **enhance casing durability**.
- Optimized groove geometry **maximizes traction** and **limits noise generation**.

- **Robust tread pattern** suitable for the toughest conditions.
- Connected tread blocks stabilize block movements and **enhance tread life**.
- Optimized groove geometry, **maximizes traction** and **limits noise generation**.
- **Adaptable Tread Pattern Technology** variable tread geometry during tyre life guarantees **robustness** and **extended tyre life**.



(1) Fuel efficiency class

(2) Wet grip class

(3) External rolling noise class



Snow grip / 3PMSF marking

Allowed

Allowed on all wheel drive vehicles



## TE68-M



SIZE	LOAD INDEX / SPEED CODE	REGULATION EU 2020/740 Label parameters			
					M+S
12.00 R 24	160/156 K				✓

- **Robust tread pattern** suitable for mixed roads of medium severity.
- Side lugs design reduces heat build-up in order to:
  - **maximize** tyre integrity and longevity;
  - **ensure** good traction performance.
- Optimized grooves geometry promotes **excellent tearing resistance**.
- Longitudinal zig-zag grooves shape **enhances road holding** and **smooth ride** on all kind of working conditions.



## TE68-D (24")



SIZE	LOAD INDEX / SPEED CODE	REGULATION EU 2020/740 Label parameters			
					POR
12.00 R 24	160/156 K				✓

- Wide and deep transversal grooves in order to:
  - enhance **road holding**;
  - ensure **good traction performance**.
- Robust shoulder blocks and thickness of the central rib provide **resistance against laceration**.
- Zig-Zag pockets on central rib guarantee a **better traction**.
- Stone ejectors on shoulder grooves **prevent stones trapping** and **ensure better durability and retreadability**.

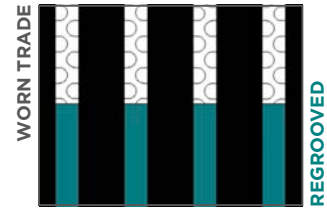
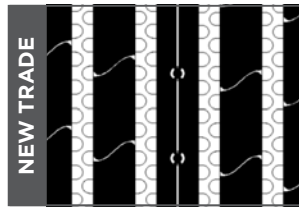


# REGROOVING

P.Max 2 mm W.Max 8 mm

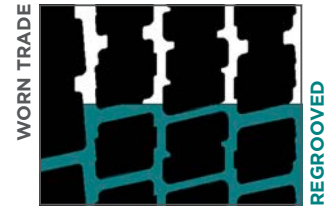
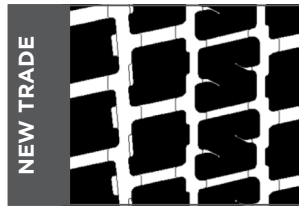
ON ROAD

**TE48-S**



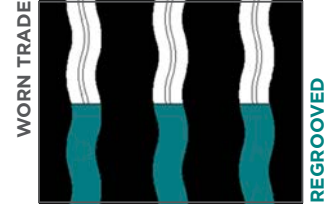
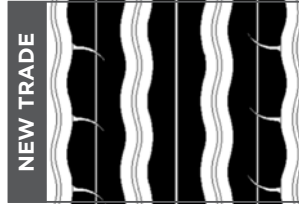
REGROOVED

**TE48-D**



REGROOVED

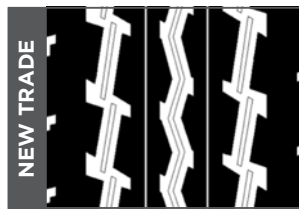
**TE48-T**



REGROOVED

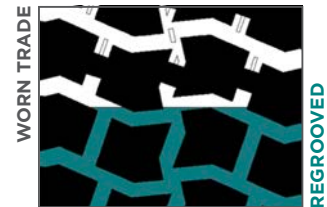
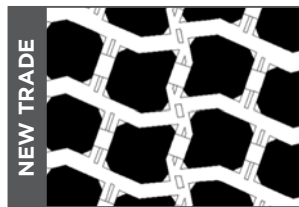
ON-OFF ROAD

**TE68-S**



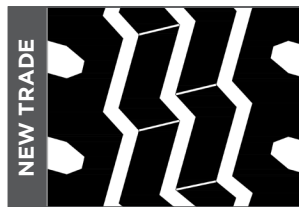
REGROOVED

**TE68-D  
(22.5")**



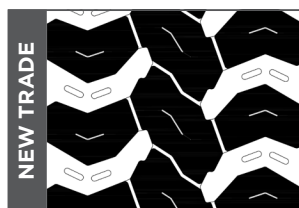
REGROOVED

**TE68-M**



REGROOVED

**TE68-D  
(24")**



REGROOVED

P. Max: Maximum regrooving depth. W. Max: Maximum regrooving width.

# TECHNICAL DATA

REGULATION EU 2020/740 - Label parameters

TREAD PATTERN	SIZE	LOAD INDEX / SPEED CODE	SECTION WIDTH (mm)	DIAMETER (mm)	STATIC RADIUS (mm)	ROLLING CIRC. (mm)	RIMS	MARKING	REGULATION EU 2020/740 - Label parameters				
									(1)	(2)	(3)	XY dB	A B C
TE48-S	<b>215/75 R 17.5</b>	126/124 M	216	768	360	2342	<u>6.00</u> -6.75	M+S	D	B	A	69 dB	✓
TE48-D	<b>215/75 R 17.5</b>	126/124 M	216	775	363	2364	<u>6.00</u> -6.75	M+S	D	B	A	70 dB	✓
TE48-T	<b>215/75 R 17.5</b>	135/133 J	216	773	354	2358	<u>6.00</u> -6.75	M+S/FRT	D	B	A	69 dB	✓
TE48-S	<b>295/80 R 22.5</b>	154/149 M	306	1050	489	3203	<u>8.25</u> -9.00	M+S	C	B	A	67 dB	✓
TE48-D	<b>295/80 R 22.5</b>	152/148 M	306	1056	491	3219	<u>8.25</u> -9.00	M+S	D	B	A	73 dB	✓
TE48-S	<b>315/70 R 22.5</b>	156/150 L (154/150 M)	315	1003	464	3059	<u>9.00</u> -9.75	M+S	C	A	B	72 dB	✓
TE48-D	<b>315/70 R 22.5</b>	154/150 L (152/148 M)	315	1012	468	3087	<u>9.00</u> -9.75	M+S	D	A	B	75 dB	✓
TE48-S	<b>315/80 R 22.5</b>	156/150 L (154/150 M)	316	1070	498	3264	<u>9.00</u> -9.75	M+S	C	A	B	71 dB	✓
TE48-D	<b>315/80 R 22.5</b>	156/150 L (154/150 M)	316	1078	501	3288	<u>9.00</u> -9.75	M+S	D	B	A	73 dB	✓
TE48-T	<b>385/65 R 22.5</b>	160 K (158 L)	381	1066	484	3251	<u>11.75</u> -12.25	M+S/FRT	C	A	B	72 dB	✓

TE68-S	<b>13 R 22.5</b>	156/150 K (154/150 L)	316	1117	518	3407	<u>9.00</u> -9.75	M+S	D	A	A	70 dB	✓
TE68-D	<b>13 R 22.5</b>	156/150 K (154/150 L)	316	1121	519	3419	<u>9.00</u> -9.75	M+S	D	B	B	74 dB	✓
TE68-S	<b>315/80 R 22.5</b>	156/150 K	316	1076	500	3282	<u>9.00</u> -9.75	M+S	C	A	B	74 dB	✓
TE68-D	<b>315/80 R 22.5</b>	156/150 K	316	1080	502	3294	<u>9.00</u> -9.75	M+S	D	B	B	74 dB	✓
TE68-M	<b>12.00 R 24</b>	160/156 K	315	1218	563	3715	<u>8.50</u> -9.00	M+S					
TE68-D	<b>12.00 R 24</b>	160/156 K	315	1222	565	3727	<u>8.50</u> -9.00	POR					

(1) Fuel efficiency class    (2) Wet grip class    (3) External rolling noise class

 Snow grip / 3PMSF marking

Rim underlined is measuring rim

FRT: Free Rolling Tyre

POR: Professional Off Road Tyres, out of the scope of EC regulation 740/2020

# TEGRYS

A brand of  
**PROMETEON**

TEGRYS.COM