



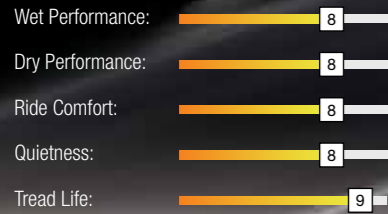
COMMERCIAL LIGHT TRUCK TYRE



COMMERCIO

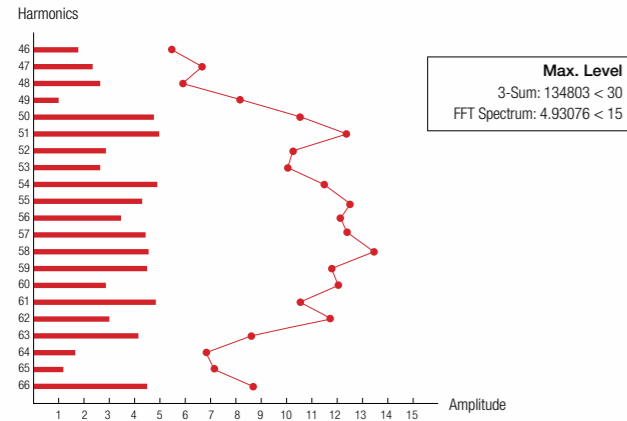
VX1

PERFORMANCE RATINGS:



The **COMMERCIO VX1** is a light truck tyre engineered for commercial delivery and demanding regional applications. Featuring an enhanced compound to resist tyre damage, as well as a reinforced casing to improve load capacity. The Comercio VX1 delivers exceptional mileage and tread life.

New profile design with a significantly improved carrying capacity. Strengthened tread construction, abrasion resistance and puncture resistance. Special tread formula enhances traction and improves skid resistance.



Variable Pitch Design
The tread is constructed with a variable pitch design which significantly reduces noise emissions for a more comfortable driving experience.



- 1** The new sipe design on the centre blocks and shoulder improve handling and grip, dissipate heat, improve traction, and offer greater driving comfort.
- 2** Block groove angles help reduce noise emissions.



Main Groove Design
Three main grooves are designed to effectively drain water and offer greater high speed stability on wet and dry roads; improved traction and hydroplaning resistance.

Long Tread Life
The shoulder pattern design promotes uniform wear to offer greater mileage. Enhanced tread structure and tread formula improve wear and puncture resistance.



Rim	SIZE	LI	SR	XL	Labelling	Tread Depth (mm)	Standard RIM (inch)	Section Width (mm)	Overall Diameter (mm)	Max Load (kg)	Pressure (kpa)	SW	Rim Protector
14	175/65R14C	90/88	T	-	E/C/71/2	8.5	5J	177	584	600/560	375	BSW	-
14	165/70R14C	89/87	T	-	E/C/71/2	8.5	5J	170	588	580/545	375	BSW	-
15	205/65R15C	102/100	T	-	E/C/72/2	9.5	6J	209	647	850/800	375	BSW	-
15	195/70R15C	104/102	R	-	E/C/71/2	9.5	6J	201	655	900/850	450	BSW	-
15	205/70R15C	106/104	R	-	C/C/72/2	9.5	6J	209	669	950/900	450	BSW	-
15	215/70R15C	109/107	R	-	C/B/72/2	10	6 1/2J	221	683	1030/975	450	BSW	-
15	225/70R15C	112/110	R	-	C/B/72/2	10	6 1/2J	228	697	1120/1060	450	BSW	-
16	195/60R16C	99/97	H	-	E/C/71/2	9.5	6J	201	640	775/730	375	BSW	-
16	195/65R16C	104/102	T	-	E/C/71/2	9.5	6J	201	660	900/850	475	BSW	-
16	205/65R16C	107/105	T	-	C/C/72/2	9.5	6J	209	672	975/925	475	BSW	-
16	215/65R16C	109/107	R	-	C/B/72/2	9.5	6 1/2J	221	686	1030/975	475	BSW	-
16	225/65R16C	112/110	R	-	C/B/72/2	10	6 1/2J	228	698	1120/1060	475	BSW	-
16	235/65R16C	115/113	R	-	C/B/72/2	10	7J	240	712	1215/1150	475	BSW	-
16	195/75R16C	107/105	Q	-	C/C/71/2	9.5	5 1/2J	196	698	975/925	475	BSW	-
16	205/75R16C	110/108	R	-	C/C/72/2	9.5	5 1/2J	203	714	1060/1000	475	BSW	-
16	215/75R16C	113/111	R	-	C/B/72/2	10	6J	216	728	1150/1090	475	BSW	-