

△ TRIANGLE

COMMERCIAL TIRES

Product Catalogue
2020

COMMERCIAL TIRES Product Catalogue

△ **TRIANGLE**
Tires for Life

www.triangle.com.cn

www.triangle.com.cn

△ **TRIANGLE**
Tires for Life



R&D - China and USA

- Product development for replacement market
- OE for domestic vehicle manufacturers
- Business intelligence of current and future tire trends
- Developing advanced tire technology
- Technical interface for Marketing & Sales

Manufacturing Excellence

Triangle Tyre is among the largest tire manufacturers in the world and the 4th largest worldwide for OTR tires. Listed on the Shanghai Stock Exchange in September 2016.

World's Most Advanced Manufacturing in PCR new plant

- Latest in manufacturing plant technology
- Modern operations for existing and new facilities

State-of-the-Art equipment and automation

- Green, clean, lean and safe manufacturing: Huamao solar panels arrays & water recycling system
- Automatic Building Machines: Upgraded VMI Exxiom
- Cold Mixing Technology
- Production line with full integration of IT and intelligent solutions
- Automatic Warehouse System



Headquarters



Huayang Passenger Car Radial (PCR) & Light Truck Radial (LTR): 8 million units



Huamao Truck Bus Radials (TBR): 7 million units



Huasheng Pass Car Radial (PCR): 12 million units
Bias OTR: 100,000 units



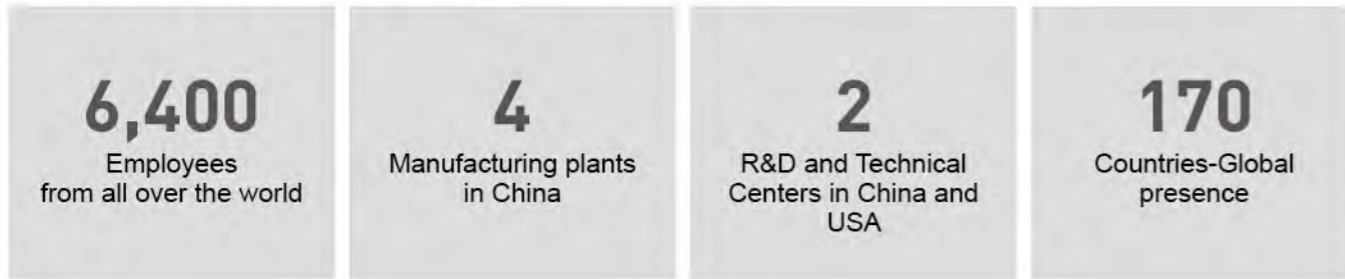
Huada Retread: 500,000 units
Tubes & Flaps: 10 million units



Solar panels arrays

Triangle Tyre Company Overview

Headquartered in Weihai China.
Founded in 1976, Triangle Tyre has become a leading tire manufacturer in China and one of the largest in the world.



Triangle Tire Production



Stock Exchange Listing

- Triangle Tyre is among the largest tire manufacturers in the world and the 4th largest worldwide for OTR tires.
- Listed on the Shanghai Stock Exchange in September 2016.



Original Equipment



TRUCK



LONG HAUL _____ 01 - 10

TRS01 TRD01 TRD03 TRT01 TR601H TR696A



REGIONAL HAUL _____ 11 - 38

TRS06 TRS03 TRS02 TRD05II TRD06 TRD05 TRT02

TRT03 TTM-A11 TR656 TR666 TR686 TR657 TR688

TTR-A11 TR668 TR880



MIXED SERVICE _____ 39 - 46

TR690 TTM-D28 TR663 TTM-D22 TR618



OFF ROAD _____ 47 - 55

TR912 TR918 TTO-A12 TR916 TR691 TR919



WINTER _____ 56 - 58

TRD97 TRD99 TRD88

LIGHT TRUCK



LIGHT TRUCK _____ 59 - 67

TR689A TR685 TRA02 TR558 TR656 TR693

BUS



COACH _____ 68 - 70

TRC03 TBH-A11 TBH-A12



URBAN _____ 71 - 78

TBC-A21 TR615 TR685 TBC-A21 TBC-D11



WINTER _____ 79

TRD98



LONG HAUL

STEER

DRIVE

TRAILER



TRS01



TRD01



TRT01



TR601H



TRD03



TR696A



TRS01

Size	LI/SS	PR	Rim size	Rim allowance	Inflated Section width mm	Overall diameter mm	Radius under load mm	Load capacity kg/lbs				IP		OTD mm
								Single		Dual		kPa	psi	
11R22.5	144/142M	14	8.25	7.50	279	1054	491	2800	6175	2650	5840	720	105	15.0
11R22.5	146/143M	16	8.25	7.50	279	1054	491	3000	6610	2725	6005	830	120	15.0
11R24.5	146/143M	14	8.25	7.50	279	1104	516	3000	6610	2725	6005	720	105	15.0
11R24.5	149/146M	16	8.25	7.50	279	1104	516	3250	7160	3000	6610	830	120	15.0
295/75R22.5	144/141M	14	9.00	8.25	298	1014	474	2800	6175	2575	5675	760	110	15.0
285/75R24.5	144/141M	14	8.25	—	283	1050	493	2800	6175	2575	5675	760	110	15.0
285/75R24.5	147/144L	16	8.25	—	283	1050	493	3075	6780	2800	6175	830	120	15.0



TRS01



Special compound for fuel saving



Fuel



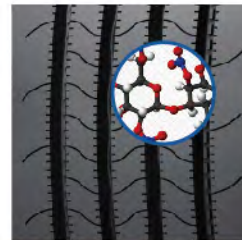
Mileage



Safety



Wear



- Enhanced tread compounding**
- Reduced rolling resistance under long haul operation
 - Fuel saving and mileage



- 5 straight ribs with few sipes**
- Minimizes the rolling resistance under long haul operation
 - Fuel saving and mileage

- Optimized casing package**
- Increased casing toughness
 - Improved retreadability

TRD01

Size	LI/SS	PR	Rim size	Rim allowance	Inflated Section width mm	Overall diameter mm	Radius under load mm	Load capacity kg/lbs				IP		OTD mm
								Single		Dual		kPa	psi	
11R22.5	144/142M	14	8.25	7.50	279	1054	491	2800	6175	2650	5840	720	105	22.5
11R22.5	146/143M	16	8.25	7.50	279	1054	491	3000	6610	2725	6005	830	120	22.5
11R24.5	146/143M	14	8.25	7.50	279	1104	516	3000	6610	2725	6005	720	105	21.0
11R24.5	149/146M	16	8.25	7.50	279	1104	516	3250	7160	3000	6610	830	120	21.0
275/70R22.5	148/145L	16	8.25	9.00	276	958	446	3150	6940	2900	6395	860	125	22.5
275/70R22.5	152/148K	18	8.25	9.00	276	958	446	3550	7830	3150	6940	930	135	22.5
295/75R22.5	144/141M	14	9.00	8.25	298	1014	474	2800	6175	2575	5675	760	110	22.5
285/75R24.5	144/141M	14	8.25	—	283	1050	493	2800	6175	2575	5675	760	110	21.0
285/75R24.5	147/144L	16	8.25	—	283	1050	493	3075	6780	2800	6175	830	120	21.0



TRD01



Good grip for long haul operation



Fuel



Mileage



Safety



Wear



Innovative tread compound

- Reduced rolling resistance
- Fuel saving

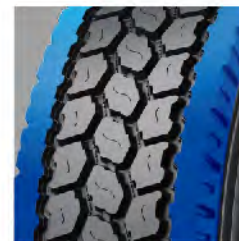


Deep center blocks

- Excellent grip and traction
- Excellent handling for drive axle during operation

Optimized casing package

- Increased casing toughness
- Improved retreadability



Closed shoulder ribs

- Further reduces rolling resistance and prevents shoulder ribs heel and toe for long haul operation
- Fuel saving and mileage



TRD03

Size	PR	Rim size	Rim allowance	Inflated Section width mm	Overall diameter mm	Radius under load mm	Load capacity kg/lbs				IP		OTD mm	
							Single		Dual		kPa	psi		
11R22.5	144/142M	14	8.25	7.50	279	1054	491	2800	6175	2650	5840	720	105	21.0
11R22.5	146/143M	16	8.25	7.50	279	1054	491	3000	6610	2725	6005	830	120	21.0
11R24.5	146/143M	14	8.25	7.50	279	1104	516	3000	6610	2725	6005	720	105	21.0
11R24.5	149/146M	16	8.25	7.50	279	1104	516	3250	7160	3000	6610	830	120	21.0
295/75R22.5	144/141M	14	9.00	8.25	298	1014	474	2800	6175	2575	5675	760	110	21.0
285/75R24.5	144/141M	14	8.25	—	283	1050	493	2800	6175	2575	5675	760	110	21.0
285/75R24.5	147/144L	16	8.25	—	283	1050	493	3075	6780	2800	6175	830	120	21.0



TRD03



Optimized traction for long haul operation



Fuel



Mileage



Safety

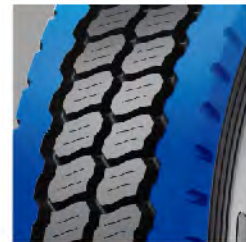


Wear



Improved center block

- Improved grip and block toughness
- Excellent traction



Strong closed shoulder ribs

- Reduced rolling resistance and prevents shoulder ribs heel and toe for long haul operation
- Fuel saving and mileage

Optimized casing package

- Increased casing toughness
- Improved retreadability



TRT01

Size	LI/SS	PR	Rim size	Rim allowance	Inflated Section width mm	Overall diameter mm	Radius under load mm	Load capacity kg/lbs				IP		OTD mm
								Single		Dual		kPa	psi	
11R22.5	144/142M	14	8.25	7.50	279	1054	491	2800	6175	2650	5840	720	105	11.0
11R22.5	146/143M	16	8.25	7.50	279	1054	491	3000	6610	2725	6005	830	120	11.0
12R22.5	150/147L	16	9.00	8.25	300	1085	504	3350	7390	3075	6780	830	120	16.0
12R22.5	152/149K	18	9.00	8.25	300	1085	504	3550	7830	3250	7160	930	135	16.0
11R24.5	146/143M	14	8.25	7.50	279	1104	516	3000	6610	2725	6005	720	105	11.0
11R24.5	149/146M	16	8.25	7.50	279	1104	516	3250	7160	3000	6610	830	120	11.0
295/75R22.5	144/141M	14	9.00	8.25	298	1014	474	2800	6175	2575	5675	760	110	11.0
285/75R24.5	144/141M	14	8.25	—	283	1050	493	2800	6175	2575	5675	760	110	11.0
285/75R24.5	147/144L	16	8.25	—	283	1050	493	3075	6780	2800	6175	830	120	11.0
255/70R22.5	140/137M	16	7.50	8.25	255	930	435	2500	5510	2300	5070	830	120	13.0



TRT01



Lower your fuel spending on trailer



Fuel



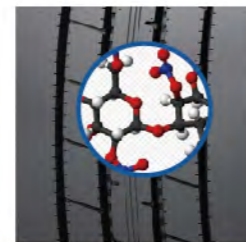
Mileage



Safety



Wear



- Enhanced tread compounding
- Reduced rolling resistance under long haul operation
 - Fuel saving and mileage



- 5 straight ribs with few sipes
- Minimizes the rolling resistance under long haul operation
 - Fuel saving and mileage

- Optimized casing package
- Increased casing toughness
 - Improved retreadability



TR601H



FEATURE:

- Special tread compound
- 5 straight ribs design with sipes
- Rib sipes and decoupling grooves design
- Optimized casing package

ADVANTAGE:

- Reduced rolling resistance under long haul operation
- Water dispersion and reduces rolling resistance under long haul operation
- Prevents side force to center and shoulder ribs
- Increased casing toughness

BENEFIT:

- Fuel saving and mileage
- Safety and fuel saving
- Prevents irregular wear and improves mileage
- Improved retreadability



TR696A



FEATURE:

- Special tread compound
- 5 straight ribs design with sipes
- Rib sipes and decoupling grooves design
- Optimized casing package

ADVANTAGE:

- Reduces rolling resistance under long haul operation
- Lower rolling resistance and with good handling
- Prevents irregular wear and improves mileage
- Increased casing toughness

BENEFIT:

- Fuel saving and mileage
- Safety and fuel saving
- Prevents irregular wear and improves mileage
- Improved retreadability

Size	LI/SS	PR	Rim size	Rim allowance	Inflated Section width mm	Overall diameter mm	Radius under load mm	Load capacity kg/lbs		IP		OTD mm
								Single	Dual	kPa	psi	
10.00R20	146/143L	16	7.50	7.50V,8.00	278	1054	486	3000 6610	2725 6005	830 120	15.0	
10.00R20	149/146L	18	7.50	7.50V,8.00	278	1054	486	3250 7160	3000 6610	930 135	15.0	
11.00R20	150/147L	16	8.00	8.50,8.00V	293	1085	499	3350 7390	3075 6780	830 120	16.0	
11.00R20	152/149L	18	8.00	8.50,8.00V	293	1085	499	3550 7830	3250 7160	930 135	16.0	
12.00R20	154/151L	18	8.50	8.50V,9.00	315	1125	516	3750 8270	3450 7610	830 120	17.0	
11R22.5	144/142M	14	8.25	7.50	279	1054	491	2800 6175	2650 5840	720 105	15.0	
11R22.5	146/143M	16	8.25	7.50	279	1054	491	3000 6610	2725 6005	830 120	15.0	
12R22.5	143/141L	12	9.00	8.25	300	1085	504	2725 6005	2575 5675	620 90	16.0	
12R22.5	150/147L	16	9.00	8.25	300	1085	504	3350 7390	3075 6780	830 120	16.0	
12R22.5	152/149K	18	9.00	8.25	300	1085	504	3550 7830	3250 7160	930 135	16.0	
13R22.5	156/153L	18	9.75	9.00	320	1124	521	4000 8820	3650 8050	875 127	17.0	
295/80R22.5	152/148M	16	9.00	8.25	298	1044	487	3550 7825	3150 6945	850 125	16.0	
315/80R22.5	154/151M	18	9.00	9.75	312	1076	500	3750 8270	3450 7610	830 120	17.0	
315/80R22.5	157/154L	20	9.00	9.75	312	1076	500	4125 9090	3750 8270	900 130	17.0	

Size	LI/SS	PR	Rim size	Rim allowance	Inflated Section width mm	Overall diameter mm	Radius under load mm	Load capacity kg/lbs		IP		OTD mm
								Single	Dual	kPa	psi	
11R22.5	144/142M	14	8.25	7.50	279	1054	491	2800 6175	2650 5840	720 105	15.0	
11R22.5	146/143M	16	8.25	7.50	279	1054	491	3000 6610	2725 6005	830 120	15.0	
11R24.5	146/143M	14	8.25	7.50	279	1104	516	3000 6610	2725 6005	720 105	15.0	
11R24.5	149/146M	16	8.25	7.50	279	1104	516	3250 7160	3000 6610	830 120	15.0	
295/75R22.5	144/141M	14	9.00	8.25	298	1014	474	2800 6175	2575 5675	760 110	15.0	
295/75R22.5	146/143M	16	9.00	8.25	298	1014	474	3000 6610	2725 6005	830 120	15.0	
285/75R24.5	144/141M	14	8.25	—	283	1050	493	2800 6175	2575 5675	760 110	15.0	
285/75R24.5	147/144L	16	8.25	—	283	1050	493	3075 6780	2800 6175	830 120	15.0	



REGIONAL

STEER	DRIVE	TRAILER	ALL POSITION
			
TRS06	TRD05II	TRT02	TTM-A11
			
TRS03	TRD06	TRT03	TTR-A11
			
TRS02	TRD05		TR880
			
TR656	TR657		TR668
			
TR666	TR688		
			
TR686			



TRS06

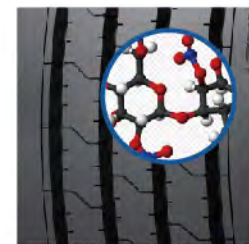
Size	LI/SS	PR	Rim size	Rim allowance	Inflated Section width mm	Overall diameter mm	Radius under load mm	Load capacity kg/lbs				IP		OTD mm
								Single		Dual		kPa	psi	
12R22.5	150/147L	16	9.00	8.25	300	1085	504	3350	7390	3075	6780	830	120	17.5
12R22.5	152/149K	18	9.00	8.25	300	1085	504	3550	7830	3250	7160	930	135	17.5



TRS06



Super wear, extra mileage



Advanced tread compound

- High scrub resistance and extra wear under regional haul operation
- Good wear performance and mileage



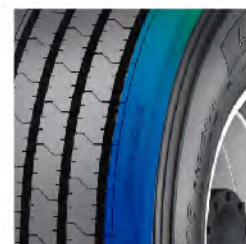
Wide tread width design

- Additional cap gum volume on tread gives big contact patch
- Extra mileage and traction



Five Strong ribs design with low void ratio

- Extra cap gum volume to prevent irregular shoulder wear in cornering and handling
- Even wear and long life



Wide shoulder ribs

- Prevents shoulder wear
- Even wear on shoulder area

TRS03

Size	LI/SS	PR	Rim size	Rim allowance	Inflated Section width mm	Overall diameter mm	Radius under load mm	Load capacity kg/lbs				IP		OTD mm
								Single		Dual		kPa	psi	
11R22.5	144/142M	14	8.25	7.50	279	1054	491	2800	6175	2650	5840	720	105	16.5
11R22.5	146/143M	16	8.25	7.50	279	1054	491	3000	6610	2725	6005	830	120	16.5
12R22.5	150/147L	16	9.00	8.25	300	1085	504	3350	7390	3075	6780	830	120	17.5
12R22.5	152/149K	18	9.00	8.25	300	1085	504	3550	7830	3250	7160	930	135	17.5
295/80R22.5	152/149M	18	9.00	8.25	298	1044	487	3550	7825	3250	7160	900	130	13.5
295/80R22.5	154/151M	18	9.00	8.25	298	1044	487	3750	8270	3450	7610	900	130	13.5
315/80R22.5	154/151M	18	9.00	9.75	312	1076	500	3750	8270	3450	7610	830	120	13.5
315/80R22.5	157/154L	20	9.00	9.75	312	1076	500	4125	9090	3750	8270	900	130	13.5
315/60R22.5	152/148K	18	9.75	9.00	313	950	447	3550	7830	3150	6940	900	130	13.5

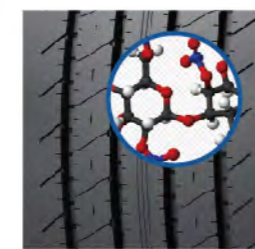
• Passed EU RR and Noise test for 295/80R22.5, 315/60R22.5 and 315/80R22.5



TRS03



Special compound for excellent wear



Enhanced tread compound

- High scrub resistance and extra wear under regional haul operation
- Good wear performance and mileage



Wide tread width design

- Additional cap gum volume on tread gives big contact patch
- Extra mileage and traction



Five Strong ribs design with low void ratio

- Extra cap gum volume to prevent irregular shoulder wear in cornering and handling
- Even wear and long life



Special sipe and pitch design

- Improved traction, controlling and noise
- Comfortable handling experience



TRS02

Size	LI/SS	PR	Rim size	Rim allowance	Inflated Section width mm	Overall diameter mm	Radius under load mm	Load capacity kg/lbs		IP		OTD mm
								Single	Dual	kPa	psi	
8.25R20	136/134L	14	6.50	6.50T,7.00,7.00T	236	974	452	2240 4940	2120 4675	830 120	14.0	
8.25R20	139/137L	16	6.50	6.50T,7.00,7.00T	236	974	452	2430 5355	2300 5070	930 135	14.0	
10R22.5	141/139M	14	7.50	6.75	254	1019	476	2575 5675	2430 5355	790 115	15.0	
10R22.5	144/142L	16	7.50	6.75	254	1019	476	2800 6175	2650 5840	900 130	15.0	
11R22.5	144/142M	14	8.25	7.50	279	1054	491	2800 6175	2650 5840	720 105	15.0	
11R22.5	146/143M	16	8.25	7.50	279	1054	491	3000 6610	2725 6005	830 120	15.0	
11R22.5	149/146L	18	8.25	7.50	279	1054	491	3250 7160	3000 6610	930 135	15.0	
12R22.5	150/147L	16	9.00	8.25	300	1085	504	3350 7390	3075 6780	830 120	16.0	
12R22.5	152/149K	18	9.00	8.25	300	1085	504	3550 7830	3250 7160	930 135	16.0	
13R22.5	156/153L	18	9.75	9.00	320	1124	521	4000 8820	3650 8050	875 127	17.0	
13R22.5	156/153L	20	9.75	9.00	320	1124	521	4000 8820	3650 8050	930 135	17.0	
11R24.5	146/143M	14	8.25	7.50	279	1104	516	3000 6610	2725 6005	720 105	15.0	
11R24.5	149/146M	16	8.25	7.50	279	1104	516	3250 7160	3000 6610	830 120	15.0	
275/80R22.5	149/146M	16	8.25	7.50	276	1012	473	3250 7165	3000 6615	850 125	14.0	
275/80R22.5	149/146L	18	8.25	7.50	276	1012	473	3250 7165	3000 6615	900 130	14.0	
295/80R22.5	152/148M	16	9.00	8.25	298	1044	487	3550 7825	3150 6945	850 125	16.0	
295/80R22.5	152/149L	18	9.00	8.25	298	1044	487	3550 7825	3250 7160	900 130	16.0	
295/80R22.5	152/149M	18	9.00	8.25	298	1044	487	3550 7825	3250 7160	900 130	16.0	
295/80R22.5	154/151M	18	9.00	8.25	298	1044	487	3750 8270	3450 7610	900 130	16.0	
315/80R22.5	154/151M	18	9.00	9.75	312	1076	500	3750 8270	3450 7610	830 120	16.0	
315/80R22.5	157/154L	20	9.00	9.75	312	1076	500	4125 9090	3750 8270	900 130	16.0	
295/75R22.5	144/141M	14	9.00	8.25	298	1014	474	2800 6175	2575 5675	760 110	15.0	
285/75R24.5	144/141M	14	8.25	—	283	1050	493	2800 6175	2575 5675	760 110	15.0	
265/70R19.5	137/134M	14	7.50	8.25	262	867	402	2300 5070	2120 4675	760 110	14.0	
265/70R19.5	140/138M	16	7.50	8.25	262	867	402	2500 5510	2360 5205	775 112	14.0	
265/70R19.5	143/141J	18	7.50	8.25	262	867	402	2725 6005	2575 5675	850 123	14.0	
255/70R22.5	140/137M	16	7.50	8.25	255	930	435	2500 5510	2300 5070	830 120	14.5	
275/70R22.5	148/145L	16	8.25	9.00	276	958	446	3150 6940	2900 6395	860 125	17.0	
275/70R22.5	152/148J	18	8.25	9.00	276	958	446	3550 7830	3150 6940	930 135	17.0	
305/70R22.5	150/148M	18	9.00	8.25	305	1000	464	3350 7390	3150 6940	850 123	15.0	
305/70R22.5	153/150L	20	9.00	8.25	305	1000	464	3650 8050	3350 7390	900 130	15.0	
315/70R22.5	151/148M	18	9.00	9.75	312	1014	469	3450 7610	3150 6940	830 120	15.0	
315/70R22.5	152/148M(154/150L)	16	9.00	9.75	312	1014	469	3550 7830	3150 6940	830 120	15.0	

TRS02



Good CPK choice for regional haul operation



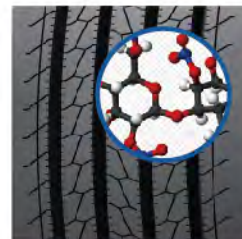
Mileage



Safety



Wear



Enhanced tread compound

- High scrub resistance and excellent wear under regional haul operation
- Good wear performance and mileage



Special sipe design

- Good traction in wet road condition
- Good handling in wet road condition



Wavy grooves design

- Prevents stone pinching and groove crack
- Avoids stone on road and optimized for long mileage



TRD05II

Size	LI/SS	PR	Rim size	Rim allowance	Inflated Section width mm	Overall diameter mm	Radius under load mm	Load capacity kg/lbs				IP		OTD mm
								Single		Dual		kPa	psi	
12R22.5	150/147K	16	9.00	8.25	300	1085	504	3350	7390	3075	6780	830	120	23.0
12R22.5	152/149K	18	9.00	8.25	300	1085	504	3550	7830	3250	7160	930	135	23.0



TRD05II



Non-Directional Drive tire with excellent traction and wear



Mileage



Safety



Wear



- Improved tread pattern design with big blocks and low void ratio
- Provides more traction and long life for regional haul operation
 - Long life and mileage



- Open shoulder ribs design with sipes
- Maintains good traction for regional haul operation
 - Good traction and handling

- Optimized casing package
- Increased casing toughness
 - Improved retreadability



TRD06

Size	LI/SS	PR	Rim size	Rim allowance	Inflated Section width mm	Overall diameter mm	Radius under load mm	Load capacity kg/lbs				IP		OTD mm
								Single		Dual		kPa	psi	
11.00R20	150/147K	16	8.00	8.50,8.00V	293	1085	499	3350	7390	3075	6780	830	120	19.0
11.00R20	152/149K	18	8.00	8.50,8.00V	293	1085	499	3550	7830	3250	7160	930	135	19.0
9.5R17.5	129/127L	14	6.75	6.00	240	842	391	1850	4080	1750	3860	750	109	16.0
9.5R17.5	136/134M	18	6.75	6.00	240	842	391	2240	4940	2120	4675	900	130	16.0
11R22.5	144/142M	14	8.25	7.50	279	1054	491	2800	6175	2650	5840	720	105	20.5
11R22.5	146/143M	16	8.25	7.50	279	1054	491	3000	6610	2725	6005	830	120	20.5
12R22.5	150/147L	16	9.00	8.25	300	1085	504	3350	7390	3075	6780	830	120	21.5
12R22.5	152/149K	18	9.00	8.25	300	1085	504	3550	7830	3250	7160	930	135	21.5
295/80R22.5	152/149K	18	9.00	8.25	298	1044	487	3550	7825	3250	7160	900	130	20.0
295/80R22.5	152/148L	16	9.00	8.25	298	1044	487	3550	7825	3150	6945	850	125	20.0
295/80R22.5	152/149L	18	9.00	8.25	298	1044	487	3550	7825	3250	7160	900	130	20.0
315/80R22.5	154/151L	18	9.00	9.75	312	1076	500	3750	8270	3450	7610	830	120	20.0
315/80R22.5	156/150L	18	9.00	9.75	312	1076	500	4000	8820	3350	7390	875	127	20.0
315/80R22.5	157/154K	20	9.00	9.75	312	1076	500	4125	9090	3750	8270	900	130	20.0
245/70R19.5	133/131M	14	7.50	6.75	248	839	391	2060	4540	1950	4300	760	110	16.5
245/70R19.5	135/133L	16	7.50	6.75	248	839	391	2180	4805	2060	4540	830	120	16.5
245/70R19.5	136/134M	16	7.50	6.75	248	839	391	2240	4940	2120	4675	830	120	16.5
245/70R19.5	141/140J	18	7.50	6.75	248	839	391	2575	5675	2500	5510	850	125	16.5
265/70R19.5	137/134L	14	7.50	8.25	262	867	402	2300	5070	2120	4675	760	110	16.0
265/70R19.5	140/138L	16	7.50	8.25	262	867	402	2500	5510	2360	5205	775	112	16.0
265/70R19.5	140/138M	16	7.50	8.25	262	867	402	2500	5510	2360	5205	775	112	16.0
265/70R19.5	143/141J	18	7.50	8.25	262	867	402	2725	6005	2575	5675	850	123	16.0
305/70R19.5	144/141M	16	9.00	8.25	305	923	425	2800	6175	2575	5675	760	110	19.0
305/70R19.5	146/143M	18	9.00	8.25	305	923	425	3000	6610	2725	6005	830	120	19.0
305/70R19.5	148/145M	20	9.00	8.25	305	923	425	3150	6940	2900	6395	900	130	19.0
275/70R22.5	148/145L	16	8.25	9.00	276	958	446	3150	6940	2900	6395	860	125	19.0
305/70R22.5	150/148M	18	9.00	8.25	305	1000	464	3350	7390	3150	6940	850	123	19.0
305/70R22.5	153/150L	20	9.00	8.25	305	1000	464	3650	8050	3350	7390	900	130	19.0
315/70R22.5	149/146M	16	9.00	9.75	312	1014	469	3250	7160	3000	6610	760	110	20.0
315/70R22.5	151/148M	18	9.00	9.75	312	1014	469	3450	7610	3150	6940	830	120	20.0
315/70R22.5	152/148M(154/150L)	16	9.00	9.75	312	1014	469	3550	7830	3150	6940	830	120	20.0
295/60R22.5	150/147K(149/146L)	18	9.00	9.75	292	926	436	3350	7390	3075	6780	900	130	19.0
315/60R22.5	152/148K	18	9.75	9.00	313	950	447	3550	7830	3150	6940	900	130	19.5

TRD06



Directional Drive tire with excellent wear rate and even wear performance

- Mileage
- Safety
- Wear



- Big block design with low void ratio**
- Large contact patch and good wear performance
 - Excellent handling and mileage



- Block pattern with unilateral sipes**
- Maintains excellent traction and water dispersion
 - Excellent handling and braking in wet road condition



- Directional design**
- Optimized wear performance and prevents irregular wear
 - Long mileage and even wear



TRD05

Size	LI/SS	PR	Rim size	Rim allowance	Inflated Section width mm	Overall diameter mm	Radius under load mm	Load capacity kg/lbs				IP		OTD mm
								Single		Dual		kPa	psi	
11R22.5	144/142M	14	8.25	7.50	279	1054	491	2800	6175	2650	5840	720	105	22.0
11R22.5	146/143M	16	8.25	7.50	279	1054	491	3000	6610	2725	6005	830	120	22.0
12R22.5	150/147L	16	9.00	8.25	300	1085	504	3350	7390	3075	6780	830	120	23.0
12R22.5	152/149K	18	9.00	8.25	300	1085	504	3550	7830	3250	7160	930	135	23.0
11R24.5	146/143M	14	8.25	7.50	279	1104	516	3000	6610	2725	6005	720	105	22.0
11R24.5	149/146M	16	8.25	7.50	279	1104	516	3250	7160	3000	6610	830	120	22.0
275/70R22.5	148/145L	16	8.25	9.00	276	958	446	3150	6940	2900	6395	860	125	22.5
275/70R22.5	152/148K	18	8.25	9.00	276	958	446	3550	7830	3150	6940	930	135	22.5
295/75R22.5	144/141M	14	9.00	8.25	298	1014	474	2800	6175	2575	5675	760	110	22.0
285/75R24.5	144/141M	14	8.25	—	283	1050	493	2800	6175	2575	5675	760	110	22.0



TRD05



Non-Directional Drive tire for regional haul operation



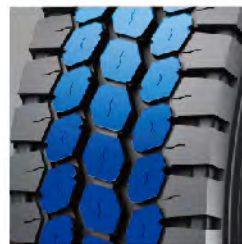
Mileage



Safety



Wear



Deep center blocks

- Excellent grip and traction
- Excellent handling for drive axle during regional haul operation



Open shoulder ribs design with sipes

- Maintains good traction for regional haul operation
- Excellent traction and handling

Optimized casing package

- Increase casing toughness
- Improved retreadability



TRT02

Size	LI/SS	PR	Rim size	Rim allowance	Inflated Section width mm	Overall diameter mm	Radius under load mm	Load capacity kg/lbs		IP		OTD mm		
								Single	Dual	kPa	psi			
385/65R22.5	160J/158L	20	11.75	12.25	11.75	389	494	4500	9920	—	—	900	130	12.0
385/55R22.5	160J/158L	20	12.25	11.75	12.25	386	466	4500	9920	—	—	900	130	12.5



TRT02



Wide base trailer tire with good wear



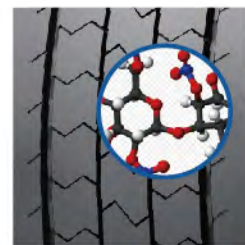
Mileage



Safety



Wear



Enhanced tread compounding

- Reduced rolling resistance under regional haul operation
- Fuel saving and mileage



Strong shoulder ribs with sipes

- Reduces side force impact and prevents shoulder irregular wear under regional haul operation
- Even wear and mileage



Low tread void ratio design

- Increased ground contact patch
- Good wear performance and mileage



TRT03

Size	LI/SS	PR	Rim size	Rim allowance	Inflated Section width mm	Overall diameter mm	Radius under load mm	Load capacity kg/lbs				IP		OTD mm
								Single		Dual		kPa	psi	
215/75R17.5	127/124M	16	6.00	6.75	211	767	359	1750	3860	1600	3530	830	120	14.0
215/75R17.5	135/133L	16	6.00	6.75	211	767	359	2180	4805	2060	4540	860	125	14.0
215/75R17.5	136/134J	18	6.00	6.75	211	767	359	2240	4940	2120	4675	890	130	14.0
235/75R17.5	132/129M	16	6.75	7.50	233	797	372	2000	4410	1850	4080	830	120	14.0
235/75R17.5	141/140J	16	6.75	7.50	233	797	372	2575	5675	2500	5510	850	123	14.0
235/75R17.5	143/141J	18	6.75	7.50	233	797	372	2725	6005	2575	5675	860	125	14.0
245/70R19.5	133/131M	14	7.50	6.75	248	839	391	2060	4540	1950	4300	760	110	13.5
245/70R19.5	135/133L	16	7.50	6.75	248	839	391	2180	4805	2060	4540	830	120	13.5
245/70R19.5	136/134M	16	7.50	6.75	248	839	391	2240	4940	2120	4675	830	120	13.5
245/70R19.5	141/140J	18	7.50	6.75	248	839	391	2575	5675	2500	5510	850	125	13.5



TRT03



Special pattern design for bulk transportation



Mileage



Safety



Wear



Special designed 3 grooves pattern

- Offers good wear performance for trailer use
- Good wear and mileage



Very strong shoulder ribs

- Prevents side force impact on shoulder area
- Offers good even wear on shoulder

Reinforced casing package

- Increased casing toughness
- Enhanced retreadability



TTM-A11

Size	LI/SS	PR	Rim size	Rim allowance	Inflated Section width mm	Overall diameter mm	Radius under load mm	Load capacity kg/lbs		IP		OTD mm
								Single	Dual	kPa	psi	
385/65R22.5 160K/158L	20	11.75	12.25	389	1072	494	4500	9920	—	900	130	17.5
385/65R22.5 164K	24	11.75	12.25	389	1072	494	5000	11000	—	900	130	17.5
425/65R22.5 165J/162K	20	12.25	11.75,13.00	422	1124	515	5150	11400	—	830	120	17.0

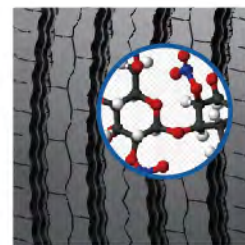


TTM-A11

All position tire with excellent wear for regional operation



Mileage Safety Wear



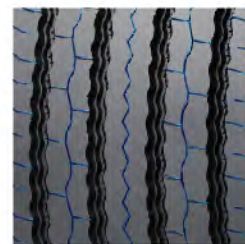
Enhanced tread compound

- High scrub resistance under regional haul operation
- Good wear performance and mileage



Strong closed shoulder ribs

- Prevents irregular shoulder wear in cornering and handling
- Even wear and long life



Special sipe design

- Good traction in wet road condition
- Good handling in wet road condition



TR656



FEATURE:

- Zigzag grooves with siping
- 5-rib design with wide shoulders
- Enhanced casing package

ADVANTAGE:

- Good wear and steering under regional haul operation
- Prevents shoulder wear
- Increases casing toughness

BENEFIT:

- Boosts premium wet/dry traction performance
- Improves durability and even wear
- Improves toughness and retreadability

Size	LI/SS	PR	Rim size	Rim allowance	Inflated Section width mm	Overall diameter mm	Radius under load mm	Load capacity kg/lbs		IP		OTD mm	
								Single	Dual	kPa	psi		
255/70R22.5 140/137M	16	7.50	8.25	255	930	435	2500	5510	2300	5070	830	120	14.0
275/70R22.5 148/145L	16	8.25	9.00	276	958	446	3150	6940	2900	6395	860	125	15.0
275/70R22.5 152/148J	18	8.25	9.00	276	958	446	3550	7830	3150	6940	930	135	15.0
275/70R22.5 146/143M	18	8.25	9.00	276	958	446	3000	6610	2725	6005	900	130	15.0



TR666



FEATURE:

- Four zigzag grooves design
- Closed shoulder ribs

BENEFIT:

- Good wet and dry traction
- Long life and mileage

ADVANTAGE:

- Good traction
- Scrub resistance in cornering

Size	LI/SS	PR	Rim size	Rim allowance	Inflated Section width mm	Overall diameter mm	Radius under load mm	Load capacity kg/lbs		IP		OTD mm		
								Single	Dual	kPa	psi			
7.00R20	126/124L	14	5.50	6.00,6.00S	200	904	422	1700	3750	1600	3520	830	120	13.0
7.50R20	130/128L	14	6.00	6.50,6.50T	215	935	435	1900	4190	1800	3970	830	120	13.0
10.00R20	146/143L	16	7.50	7.50V,8.00	278	1054	486	3000	6610	2725	6005	830	120	15.0
10.00R20	149/146K	18	7.50	7.50V,8.00	278	1054	486	3250	7160	3000	6610	930	135	15.0
11.00R20	150/147K	16	8.00	8.50,8.00V	293	1085	499	3350	7390	3075	6780	830	120	16.0
11.00R20	152/149K	18	8.00	8.50,8.00V	293	1085	499	3550	7830	3250	7160	930	135	16.0
12.00R20	154/151K	18	8.50	8.50V,9.00	315	1125	516	3750	8270	3450	7610	830	120	16.5
12.00R20	156/153K	20	8.50	8.50V,9.00	315	1125	516	4000	8820	3650	8050	900	131	16.5
8R22.5	130/128M	14	6.00	5.25,6.75	203	935	440	1900	4190	1800	3970	830	120	13.0
11R22.5	144/142M	14	8.25	7.50	279	1054	491	2800	6175	2650	5840	720	105	15.0
11R22.5	146/143M	16	8.25	7.50	279	1054	491	3000	6610	2725	6005	830	120	15.0
11R22.5	148/144M	16+	8.25	7.50	279	1054	491	6610	5800			Single:120 Dual:110	15.0	
11R22.5	148/144M	18	8.25	7.50	279	1054	491	3150	6940	2800	6175	930	135	15.0
11R22.5	149/146M	18	8.25	7.50	279	1054	491	3250	7160	3000	6610	930	135	15.0
12R22.5	143/141L	12	9.00	8.25	300	1085	504	2725	6005	2575	5675	620	90	15.0
12R22.5	143/141L	12+	9.00	8.25	300	1085	504	2725	6005	2575	5675	620	90	15.0
12R22.5	150/147L	16	9.00	8.25	300	1085	504	3350	7390	3075	6780	830	120	15.0
12R22.5	152/148L	16	9.00	8.25	300	1085	504	3550	7825	3150	6945	900	130	15.0
12R22.5	152/149K	18	9.00	8.25	300	1085	504	3550	7830	3250	7160	930	135	15.0
275/80R22.5	149/146M	16	8.25	7.50	276	1012	473	3250	7165	3000	6615	850	125	14.0
315/80R22.5	154/151M	18	9.00	9.75	312	1076	500	3750	8270	3450	7610	830	120	15.0
315/80R22.5	157/154L	20	9.00	9.75	312	1076	500	4125	9090	3750	8270	900	130	15.0
295/75R22.5	144/141M	14	9.00	8.25	298	1014	474	2800	6175	2575	5675	760	110	15.0
295/75R22.5	146/143M	16	9.00	8.25	298	1014	474	3000	6610	2725	6005	830	120	15.0

TR666JS

Size	LI/SS	PR	Rim size	Rim allowance	Inflated Section width mm	Overall diameter mm	Radius under load mm	Load capacity kg/lbs		IP		OTD mm		
								Single	Dual	kPa	psi			
9.00R20	141/139K	14	7.0	7.00T,7.5	259	1019	471	2575	5675	2430	5355	790	115	16.0
9.00R20	144/142K	16	7.0	7.00T,7.5	259	1019	471	2800	6175	2650	5840	900	130	16.0
10.00R20	146/143K	16	7.5	7.50V,8.0	278	1054	486	3000	6610	2725	6005	830	120	17.0
10.00R20	149/146K	18	7.5	7.50V,8.0	278	1054	486	3250	7160	3000	6610	930	135	17.0
11.00R20	150/147K	16	8.0	8.5,8.00V	293	1085	499	3350	7390	3075	6780	830	120	18.0
11.00R20	152/149K	18	8.0	8.5,8.00V	293	1085	499	3550	7830	3250	7160	930	135	18.0
12.00R20	154/151K	18	8.5	8.50V,9.0	315	1125	516	3750	8270	3450	7610	830	120	19.0

• TR666-JS is the derived, deeper OTD pattern on TR666



TR686



FEATURE:

- Three zigzag grooves design
- Closed shoulder ribs

ADVANTAGE:

- Good traction and prevents stone pinching
- Scrub resistance in cornering

BENEFIT:

- Good wet and dry traction
- Long life and mileage



TR657



FEATURE:

- Special designed pattern with center blocks
- Zigzag grooves with closed shoulder

ADVANTAGE:

- Provides more traction and long life for regional haul operation
- Provides traction and prevents shoulder ribs heel and toe

BENEFIT:

- Long life and mileage
- Good mileage

Size	LI/SS	PR	Rim size	Rim allowance	Inflated Section width mm	Overall diameter mm	Radius under load mm	Load capacity kg/lbs				IP		OTD mm
								Single	Dual	kPa	psi	kPa	psi	
11R22.5	140/138M	12	8.25	7.50	279	1054	491	2500	5510	2360	5200	620	90	15.0
11R22.5	144/142M	14	8.25	7.50	279	1054	491	2800	6175	2650	5840	720	105	15.0
11R22.5	146/143M	16	8.25	7.50	279	1054	491	3000	6610	2725	6005	830	120	15.0
11R22.5	148/145M	16+	8.25	7.50	279	1054	491	3150	6940	2900	6395	850	125	15.0
11R22.5	148/144M	16+	8.25	7.50	279	1054	491	6610	5800			Single: 120 Dual: 110	15.0	
11R22.5	149/146M	18	8.25	7.50	279	1054	491	3250	7160	3000	6610	930	135	15.0
12R22.5	143/141M	12+	9.00	8.25	300	1085	504	2725	6005	2575	5675	620	90	15.0
12R22.5	150/147M	16	9.00	8.25	300	1085	504	3350	7390	3075	6780	830	120	15.0
12R22.5	152/148L	16	9.00	8.25	300	1085	504	3550	7825	3150	6945	900	130	15.0
12R22.5	152/149K	18	9.00	8.25	300	1085	504	3550	7830	3250	7160	930	135	15.0
11R24.5	146/143M	14	8.25	7.50	279	1104	516	3000	6610	2725	6005	720	105	15.0
11R24.5	149/146M	16	8.25	7.50	279	1104	516	3250	7160	3000	6610	830	120	15.0
295/80R22.5	152/148M	16	9.00	8.25	298	1044	487	3550	7825	3150	6945	850	125	15.0
295/80R22.5	152/149M	18	9.00	8.25	298	1044	487	3550	7825	3250	7160	900	130	15.0
315/80R22.5	151/148M	16	9.00	9.75	312	1076	500	3450	7610	3150	6940	760	110	15.0
315/80R22.5	154/151M	18	9.00	9.75	312	1076	500	3750	8270	3450	7610	830	120	15.0
315/80R22.5	157/154L	20	9.00	9.75	312	1076	500	4125	9090	3750	8270	900	130	15.0
295/75R22.5	144/141M	14	9.00	8.25	298	1014	474	2800	6175	2575	5675	760	110	15.0
295/75R22.5	146/143M	16	9.00	8.25	298	1014	474	3000	6610	2725	6005	830	120	15.0

Size	LI/SS	PR	Rim size	Rim allowance	Inflated Section width mm	Overall diameter mm	Radius under load mm	Load capacity kg/lbs				IP		OTD mm
								Single	Dual	kPa	psi	kPa	psi	
9.00R20	141/139L	14	7.00	7.00T,7.50	259	1019	471	2575	5675	2430	5355	790	115	16.5
9.00R20	144/142L	16	7.00	7.00T,7.50	259	1019	471	2800	6175	2650	5840	900	130	16.5
10.00R20	146/143L	16	7.50	7.50V,8.00	278	1054	486	3000	6610	2725	6005	830	120	17.5
10.00R20	149/146L	18	7.50	7.50V,8.00	278	1054	486	3250	7160	3000	6610	930	135	17.5
10.00R20	149/146K	18	7.50	7.50V,8.00	278	1054	486	3250	7160	3000	6610	930	135	17.5
11.00R20	150/147L	16	8.00	8.50,8.00V	293	1085	499	3350	7390	3075	6780	830	120	18.5
11.00R20	152/149L	18	8.00	8.50,8.00V	293	1085	499	3550	7830	3250	7160	930	135	18.5
12.00R20	154/151L	18	8.50	8.50V,9.00	315	1125	516	3750	8270	3450	7610	830	120	18.5
10R22.5	141/139M	14	7.50	6.75	254	1019	476	2575	5675	2430	5355	790	115	20.5
11R22.5	144/142M	14	8.25	7.50	279	1054	491	2800	6175	2650	5840	720	105	22.0
11R22.5	146/143M	16	8.25	7.50	279	1054	491	3000	6610	2725	6005	830	120	22.0
12R22.5	150/147L	16	9.00	8.25	300	1085	504	3350	7390	3075	6780	830	120	22.0
12R22.5	152/149K	18	9.00	8.25	300	1085	504	3550	7830	3250	7160	930	135	22.0
13R22.5	156/153L	18	9.75	9.00	320	1124	521	4000	8820	3650	8050	875	127	22.0
11R24.5	146/143M	14	8.25	7.50	279	1104	516	3000	6610	2725	6005	720	105	22.0
11R24.5	149/146M	16	8.25	7.50	279	1104	516	3250	7160	3000	6610	830	120	22.0
295/75R22.5	144/141M	14	9.00	8.25	298	1014	474	2800	6175	2575	5675	760	110	22.0
295/75R22.5	146/143L	16	9.00	8.25	298	1014	474	3000	6610	2725	6005	830	120	22.0
285/75R24.5	144/141M	14	8.25	—	283	1050	493	2800	6175	2575	5675	760	110	22.0
285/75R24.5	147/144L	16	8.25	—	283	1050	493	3075	6780	2800	6175	830	120	22.0
265/70R19.5	140/138L	14	7.50	8.25	262	867	402	2500	5510	2360	5200	850	123	15.0
265/70R19.5	143/141J	18	7.50	8.25	262	867	402	2725	6005	2575	5675	850	123	15.0



TR688



FEATURE:

- Center rib plus open shoulder design
- Deep OTD
- Strong casing package

BENEFIT:

- Good traction for handling
- Good mileage
- Improved retreadability

ADVANTAGE:

- Provides good traction in wet/dry conditions
- Long tread wear life
- Increased casing toughness



TTR-A11



FEATURE:

- Optimized pattern design
- Wide tread width design
- Strong closed shoulder ribs

BENEFIT:

- Mileage and traction
- Extra mileage and traction
- Even wear and mileage

ADVANTAGE:

- Wear performance focused for all position tire under regional haul operation
- Additional cap gum volume on tread gives big contact patch
- Maintains shoulder rib toughness during regional haul operation.

Size	LI/SS	PR	Rim size	Rim allowance	Inflated Section width mm	Overall diameter mm	Radius under load mm	Load capacity kg/lbs				IP		OTD mm
								Single	Dual	kPa	psi	kPa	psi	
9.00R20	141/139L	14	7.00	7.00T,7.50	259	1019	471	2575	5675	2430	5355	790	115	16.0
9.00R20	144/142K	16	7.00	7.00T,7.50	259	1019	471	2800	6175	2650	5840	900	130	16.0
11R22.5	144/142M	14	8.25	7.50	279	1054	491	2800	6175	2650	5840	720	105	18.0
11R22.5	146/143M	16	8.25	7.50	279	1054	491	3000	6610	2725	6005	830	120	18.0
11R22.5	148/144M	16+	8.25	7.50	279	1054	491	6610	5800			Single: 120 Dual: 110		18.0
12R22.5	150/147L	16	9.00	8.25	300	1085	504	3350	7390	3075	6780	830	120	20.0
12R22.5	152/149K	18	9.00	8.25	300	1085	504	3550	7830	3250	7160	930	135	20.0
11R24.5	146/143M	14	8.25	7.50	279	1104	516	3000	6610	2725	6005	720	105	18.0
11R24.5	149/146M	16	8.25	7.50	279	1104	516	3250	7160	3000	6610	830	120	18.0
295/80R22.5	152/148M	16	9.00	8.25	298	1044	487	3550	7825	3150	6945	850	125	18.0
295/80R22.5	152/149L	18	9.00	8.25	298	1044	487	3550	7825	3250	7160	900	130	18.0
315/80R22.5	151/148M	16	9.00	9.75	312	1076	500	3450	7610	3150	6940	760	110	20.0
315/80R22.5	154/151M	18	9.00	9.75	312	1076	500	3750	8270	3450	7610	830	120	20.0
315/80R22.5	157/154L	20	9.00	9.75	312	1076	500	4125	9090	3750	8270	900	130	20.0
295/75R22.5	144/141M	14	9.00	8.25	298	1014	474	2800	6175	2575	5675	760	110	18.0
295/75R22.5	146/143M	16	9.00	8.25	298	1014	474	3000	6610	2725	6005	830	120	18.0

Size	LI/SS	PR	Rim size	Rim allowance	Inflated Section width mm	Overall diameter mm	Radius under load mm	Load capacity kg/lbs				IP		OTD mm
								Single	Dual	kPa	psi	kPa	psi	
12R22.5	150/147L	16	9.00	8.25	300	1085	504	3350	7390	3075	6780	830	120	17.5
12R22.5	152/149K	18	9.00	8.25	300	1085	504	3550	7830	3250	7160	930	135	17.5
325/95R24	162/160K	18	9.00	9.00	325	1228	568	4750	10500	4500	9920	830	120	17.0
325/95R24	164/162J	20	9.00	9.00	325	1228	568	5000	11000	4750	10500	900	130	17.0
325/95R24	162/160K	22	9.00	9.00	325	1228	568	4750	10500	4500	9920	830	120	17.0
295/80R22.5	152/148M	16	9.00	8.25	298	1044	487	3550	7825	3150	6945	850	125	17.5
295/80R22.5	152/149M	18	9.00	8.25	298	1044	487	3550	7825	3250	7160	900	130	17.5

TR668

Size	LI/SS	PR	Rim size	Rim allowance	Inflated Section width mm	Overall diameter mm	Radius under load mm	Load capacity kg/lbs		IP		OTD mm
								Single	Dual	kPa	psi	
7.50R15TR	136/134J	18	6.00	5.50,6.50	215	808	372	2240 4940	2120 4675	830 120	12.5	
7.50R16LT	105/101L	6	6.00G	5.50F,6.50H	215	805	375	925 2040	825 1820	350 50	12.5	
7.50R16LT	112/107L	8	6.00G	5.50F,6.50H	215	805	375	1120 2470	975 2150	460 65	12.5	
7.50R16LT	122/118L	14	6.00G	5.50F,6.50H	215	805	375	1500 3305	1320 2910	770 110	12.5	
7.50R16LT	125/121L	16	6.00G	5.50F,6.50H	215	805	375	1650 3640	1450 3195	870 126	12.5	
8.25R16LT	110/105M	6	6.50H	6.00G,6.50	235	855	397	1060 2335	925 2040	320 45	13.0	
8.25R16LT	126/122M	14	6.50H	6.00G,6.50	235	855	397	1700 3750	1500 3305	670 97	13.0	
8.25R16LT	128/124M	16	6.50H	6.00G,6.50	235	855	397	1800 3970	1600 3525	770 112	13.0	
8.25R16LT	132/128L	18	6.50H	6.00G,6.50	235	855	397	2000 4410	1800 3970	870 126	13.0	
8.25R20	136/134L	14	6.50	6.50T,7.00,7.00T	236	974	452	2240 4940	2120 4675	830 120	14.0	
8.25R20	139/137L	16	6.50	6.50T,7.00,7.00T	236	974	452	2430 5355	2300 5070	930 135	14.0	
9.00R20	141/139L	14	7.00	7.00T,7.50	259	1019	471	2575 5675	2430 5355	790 115	15.5	
9.00R20	141/139K	14	7.00	7.00T,7.50	259	1019	471	2575 5675	2430 5355	790 115	15.5	
9.00R20	144/142K	16	7.00	7.00T,7.50	259	1019	471	2800 6175	2650 5840	900 130	15.5	
9.00R20	144/142L	16	7.00	7.00T,7.50	259	1019	471	2800 6175	2650 5840	900 130	15.5	
10.00R20	146/143K	16	7.50	7.50V,8.00	278	1054	486	3000 6610	2725 6005	830 120	16.5	
10.00R20	146/143L	16	7.50	7.50V,8.00	278	1054	486	3000 6610	2725 6005	830 120	16.5	
10.00R20	149/146K	18	7.50	7.50V,8.00	278	1054	486	3250 7160	3000 6610	930 135	16.5	
10.00R20	149/146L	18	7.50	7.50V,8.00	278	1054	486	3250 7160	3000 6610	930 135	16.5	
11.00R20	143/141K	12	8.00	8.50,8.00V	293	1085	499	2725 6005	2575 5675	620 90	17.0	
11.00R20	150/147K	16	8.00	8.50,8.00V	293	1085	499	3350 7390	3075 6780	830 120	17.0	
11.00R20	150/147L	16	8.00	8.50,8.00V	293	1085	499	3350 7390	3075 6780	830 120	17.0	
11.00R20	152/149K	18	8.00	8.50,8.00V	293	1085	499	3550 7830	3250 7160	930 135	17.0	
11.00R20	152/149L	18	8.00	8.50,8.00V	293	1085	499	3550 7830	3250 7160	930 135	17.0	
12.00R20	152/149K	16	8.50	8.50V,9.00	315	1125	516	3550 7830	3250 7160	760 110	17.5	
12.00R20	154/151K	18	8.50	8.50V,9.00	315	1125	516	3750 8270	3450 7610	830 120	17.5	
12.00R20	154/151L	18	8.50	8.50V,9.00	315	1125	516	3750 8270	3450 7610	830 120	17.5	
12.00R20	154/151K	18	8.50	8.50V,9.00	315	1125	516	3730 8210	3270 7200	840 120	17.5	
12.00R20	156/153K	20	8.50	8.50V,9.00	315	1125	516	4000 8820	3650 8050	900 131	17.5	
12.00R20	158/155J	22	8.50	8.50V,9.00	315	1125	516	4250 9370	3875 8540	970 141	17.5	
12.00R20	158/155L	22	8.50	8.50V,9.00	315	1125	516	4250 9370	3875 8540	970 141	17.5	
9R22.5	136/134L	14	6.75	6.00,7.50	229	974	457	2240 4940	2120 4675	830 120	14.0	
11R22.5	144/142M	14	8.25	7.50	279	1054	491	2800 6175	2650 5840	720 105	16.5	
11R22.5	146/143M	16	8.25	7.50	279	1054	491	3000 6610	2725 6005	830 120	16.5	
11R22.5	148/145L	16+	8.25	7.50	279	1054	491	3150 6940	2900 6395	850 125	16.5	
12R22.5	143/141L	12	9.00	8.25	300	1085	504	2725 6005	2575 5675	620 90	17.0	
12R22.5	150/147L	16	9.00	8.25	300	1085	504	3350 7390	3075 6780	830 120	17.0	
12R22.5	152/149K	18	9.00	8.25	300	1085	504	3550 7830	3250 7160	930 135	17.0	
13R22.5	156/153L	18	9.75	9.00	320	1124	521	4000 8820	3650 8050	875 127	17.5	
13R22.5	156/153L	20	9.75	9.00	320	1124	521	4000 8820	3650 8050	930 135	17.5	
11R24.5	146/143M	14	8.25	7.50	279	1104	516	3000 6610	2725 6005	720 105	16.5	
11R24.5	149/146M	16	8.25	7.50	279	1104	516	3250 7160	3000 6610	830 120	16.5	
295/80R22.5	152/148L	16	9.00	8.25	298	1044	487	3550 7825	3150 6945	850 125	17.5	
295/80R22.5	152/149L	18	9.00	8.25	298	1044	487	3550 7825	3250 7160	900 130	17.5	
315/80R22.5	154/151M	18	9.00	9.75	312	1076	500	3750 8270	3450 7610	830 120	17.5	
315/80R22.5	157/154L	20	9.00	9.75	312	1076	500	4125 9090	3750 8270	900 130	17.5	
315/80R22.5	161/157K	20	9.00	9.75	312	1076	500	4625 10200	4125 9090	900 130	17.5	

• LT sizes available



TR668



- Mileage
- Safety
- Wear

FEATURE:

- Classic mixed pattern designed for regional-mixed operation
- Enhanced casing package

ADVANTAGE:

- An all round pattern with wear performance and traction
- Increased casing toughness

Benefit:

- Good mileage and traction
- Good retreadability

TR668A

Size	LI/SS	PR	Rim size	Rim allowance	Inflated Section width mm	Overall diameter mm	Radius under load mm	Load capacity kg/lbs				IP		OTD mm
								Single		Dual		kPa	psi	
7.00R16LT	101/96M	6	5.50F	6.00G	200	775	362	825	1820	710	1565	350	50	11.5
7.00R16LT	107/102L	8	5.50F	6.00G	200	775	362	975	2150	850	1875	460	67	11.5
7.00R16LT	115/111M	12	5.50F	6.00G	200	775	362	1220	2690	1075	2370	670	97	11.5
7.00R16LT	118/114L	14	5.50F	6.00G	200	775	362	1320	2910	1180	2600	770	112	11.5
9.00R16LT	131/126L	14	6.50H	6.00G,6.50	255	890	416	1950	4300	1700	3750	670	97	14.0
9.00R16LT	134/129K	16	6.50H	6.00G,6.50	255	890	416	2120	4680	1850	4080	770	112	14.0

• TR668A is the derived pattern on TR668 for sizes 7.00R16 and 9.00R16

TR668-I

Size	LI/SS	PR	Rim size	Rim allowance	Inflated Section width mm	Overall diameter mm	Radius under load mm	Load capacity kg/lbs				IP		OTD mm
								Single		Dual		kPa	psi	
9.00R20	141/139L	14	7.00	7.00T,7.50	259	1019	471	2575	5675	2430	5355	790	115	15.5
9.00R20	144/142L	16	7.00	7.00T,7.50	259	1019	471	2800	6175	2650	5840	900	130	15.5
10.00R20	146/143L	16	7.50	7.50V,8.00	278	1054	486	3000	6610	2725	6005	830	120	15.0
10.00R20	149/146L	18	7.50	7.50V,8.00	278	1054	486	3250	7160	3000	6610	930	135	15.0
11.00R20	143/141L	12+	8.00	8.50,8.00V	293	1085	499	2725	6005	2575	5675	620	90	15.0
11.00R20	150/147L	16	8.00	8.50,8.00V	293	1085	499	3350	7390	3075	6780	830	120	15.0
11.00R20	152/149K	18	8.00	8.50,8.00V	293	1085	499	3550	7830	3250	7160	930	135	15.0
12.00R20	154/151L	18	8.50	8.50V,9.00	315	1125	516	3750	8270	3450	7610	830	120	16.0
11R22.5	144/142L	14	8.25	7.50	279	1054	491	2800	6175	2650	5840	720	105	15.0
11R22.5	146/143L	16	8.25	7.50	279	1054	491	3000	6610	2725	6005	830	120	15.0
12R22.5	143/141L	12	9.00	8.25	300	1085	504	2725	6005	2575	5675	620	90	15.0
12R22.5	143/141L	12+	9.00	8.25	300	1085	504	2725	6005	2575	5675	620	90	15.0
12R22.5	150/147L	16	9.00	8.25	300	1085	504	3350	7390	3075	6780	830	120	15.0
12R22.5	152/149K	18	9.00	8.25	300	1085	504	3550	7830	3250	7160	930	135	15.0

• TR668-I is the derived pattern on TR668 for Trailer OE



TR880



FEATURE:

- Strong center ribs design
- Open shoulder ribs

ADVANTAGE:

- Large center contact patch for traction and wear performance
- Good traction for all position tire

BENEFIT:

- Good traction and mileage
- Good handling

Size	LI/SS	PR	Rim size	Rim allowance	Inflated Section width mm	Overall diameter mm	Radius under load mm	Load capacity kg/lbs				IP		OTD mm
								Single		Dual		kPa	psi	
10.00R20	149/146K	18	7.50	7.50V,8.00	278	1054	486	3250	7160	3000	6610	930	135	16.5
11.00R20	150/147K	16	8.00	8.50,8.00V	293	1085	499	3350	7390	3075	6780	830	120	17.5
11.00R20	152/149K	18	8.00	8.50,8.00V	293	1085	499	3550	7830	3250	7160	930	135	17.5
12.00R20	152/149K	16	8.50	8.50V,9.00	315	1125	516	3550	7830	3250	7160	760	110	17.0
12.00R20	154/151K	18	8.50	8.50V,9.00	315	1125	516	3750	8270	3450	7610	830	120	17.0
12.00R20	156/153K	20	8.50	8.50V,9.00	315	1125	516	4000	8820	3650	8050	900	131	17.0
12.00R20	158/155J	22	8.50	8.50V,9.00	315	1125	516	4250	9370	3875	8540	970	141	17.0
11R22.5	146/143M	16	8.25	7.50	279	1054	491	3000	6610	2725	6005	830	120	16.5
11R22.5	149/146L	18	8.25	7.50	279	1054	491	3250	7160	3000	6610	930	135	16.5
12R22.5	150/147L	16	9.00	8.25	300	1085	504	3350	7390	3075	6780	830	120	17.5
12R22.5	152/149K	18	9.00	8.25	300	1085	504	3550	7830	3250	7160	930	135	17.5
13R22.5	156/153L	18	9.75	9.00	320	1124	521	4000	8820	3650	8050	875	127	17.0
315/80R22.5	154/151M	18	9.00	9.75	312	1076	500	3750	8270	3450	7610	830	120	17.0
315/80R22.5	157/154L	20	9.00	9.75	312	1076	500	4125	9090	3750	8270	900	130	17.0



MIXED SERVICE

DRIVE

ALL POSITION



TR690



TTM-D28



TR663



TTM-D22



TR618



TR690

Size	LI/SS	PR	Rim size	Rim allowance	Inflated Section width mm	Overall diameter mm	Radius under load mm	Load capacity kg/lbs				IP		OTD mm
								Single		Dual		kPa	psi	
7.50R15TR	136/134J	18	6.00	5.50,6.50	215	808	372	2240	4940	2120	4675	830	120	14.0
7.00R16LT	107/102K	8	5.50F	6.00G	200	785	362	975	2150	850	1875	460	67	12.5
7.00R16LT	111/107K	10	5.50F	6.00G	200	775	362	1090	2405	975	2150	560	80	12.5
7.00R16LT	118/114K	14	5.50F	6.00G	200	775	362	1320	2910	1180	2600	770	112	12.5
7.50R16LT	105/101K	6	6.00G	5.50F,6.50H	215	805	375	925	2040	825	1820	350	50	14.0
7.50R16LT	112/107K	8	6.00G	5.50F,6.50H	215	805	375	1120	2470	975	2150	460	65	14.0
7.50R16LT	122/118K	14	6.00G	5.50F,6.50H	215	805	375	1500	3305	1320	2910	770	110	14.0
8.25R16LT	110/105K	6	6.50H	6.00G,6.50	235	865	397	1060	2335	925	2040	320	45	13.0
8.25R16LT	126/122K	14	6.50H	6.00G,6.50	235	865	397	1700	3750	1500	3305	170	97	13.0
8.25R16LT	128/124K	16	6.50H	6.00G,6.50	235	855	397	1800	3970	1600	3525	770	112	13.0
9.00R20	141/139K	14	7.00	7.00T,7.50	259	1019	471	2575	5675	2430	5355	790	115	15.5
9.00R20	144/142K	16	7.00	7.00T,7.50	259	1019	471	2800	6175	2650	5840	900	130	15.5
10.00R20	146/143K	16	7.50	7.50V,8.00	278	1054	486	3000	6610	2725	6005	830	120	16.5
10.00R20	149/146K	18	7.50	7.50V,8.00	278	1054	486	3250	7160	3000	6610	930	135	16.5
11.00R20	150/147K	16	8.00	8.50,8.00V	293	1085	499	3350	7390	3075	6780	830	120	17.5
11.00R20	152/149K	18	8.00	8.50,8.00V	293	1085	499	3550	7830	3250	7160	930	135	17.5
12.00R20	152/149K	16	8.50	8.50V,9.00	315	1125	516	3550	7830	3250	7160	760	110	18.5
12.00R20	154/151K	18	8.50	8.50V,9.00	315	1125	516	3750	8270	3450	7610	830	120	18.5
12.00R20	156/153G	20	8.50	8.50V,9.00	315	1125	516	4000	8820	3650	8050	900	131	18.5
12.00R20	158/155F	22	8.50	8.50V,9.00	315	1125	516	4250	9370	3875	8540	970	141	18.5
11R22.5	144/142M	14	8.25	7.50	279	1054	491	2800	6175	2650	5840	720	105	22.5
11R22.5	146/143M	16	8.25	7.50	279	1054	491	3000	6610	2725	6005	830	120	22.5

• LT sizes available

TR690-JS

Size	LI/SS	PR	Rim size	Rim allowance	Inflated Section width mm	Overall diameter mm	Radius under load mm	Load capacity kg/lbs				IP		OTD mm
								Single		Dual		kPa	psi	
8.25R16LT	128/124K	16	6.50H	6.00G,6.50	235	855	397	1800	3970	1600	3525	770	112	16.5
8.25R20	129/127K	10	6.50	6.50T,7.00,7.00T	236	986	452	1850	4080	1750	3860	620	90	16.5
8.25R20	139/137K	16	6.50	6.50T,7.00,7.00T	236	974	452	2430	5355	2300	5070	930	135	16.5
9.00R20	141/139J	14	7.00	7.00T,7.50	259	1019	471	2575	5675	2430	5355	790	115	18.0
9.00R20	144/142J	16	7.00	7.00T,7.50	259	1019	471	2800	6175	2650	5840	900	130	18.0
10.00R20	146/143J	16	7.50	7.50V,8.00	278	1054	486	3000	6610	2725	6005	830	120	19.5
10.00R20	149/146J	18	7.50	7.50V,8.00	278	1054	486	3250	7160	3000	6610	930	135	19.5
10.00R20	149/146K	18	7.50	7.50V,8.00	278	1054	486	3250	7160	3000	6610	930	135	19.5
11.00R20	150/147J	16	8.00	8.50,8.00V	293	1085	499	3350	7390	3075	6780	830	120	21.0
11.00R20	152/149J	18	8.00	8.50,8.00V	293	1085	499	3550	7830	3250	7160	930	135	21.0
12.00R20	154/151J	18	8.50	8.50V,9.00	315	1125	516	3750	8270	3450	7610	830	120	21.0
12.00R20	156/153G	20	8.50	8.50V,9.00	315	1125	516	4000	8820	3650	8050	900	131	21.0
12.00R20	158/155F	22	8.50	8.50V,9.00	315	1125	516	4250	9370	3875	8540	970	141	21.0
12R22.5	150/147L	16	9.00	8.25	300	1085	504	3350	7390	3075	6780	830	120	21.0
12R22.5	152/149K	18	9.00	8.25	300	1085	504	3550	7830	3250	7160	930	135	21.0

• TR690-JS is the derived, deeper OTD pattern on TR690

• LT sizes available

TR690E

Size	LI/SS	PR	Rim size	Rim allowance	Inflated Section width mm	Overall diameter mm	Radius under load mm	Load capacity kg/lbs				IP		OTD mm
								Single		Dual		kPa	psi	
12.00R24	158/155K	18	8.50	8.50V,9.00	315	1238	572	4250	9370	3875	8540	830	120	18.5
12.00R24	160/157J	20	8.50	8.50V,9.00	315	1238	572	4500	9921	4125	9094	900	131	18.5
12.00R24	160/157K	20	8.50	8.50V,9.00	315	1238	572	4500	9921	4125	9094	900	131	18.5

TR690



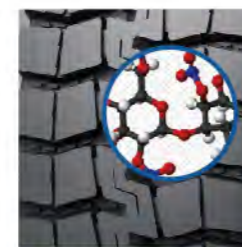
Special compound and pattern designed for mixed service



Durability



Mileage



Special tread compound

- Suitable for paved-mix road condition
- Excellent mileage



Lug pattern design with straight sub-grooves

- Good traction under paved-mixed operation
- Good handling and control



Open and wide grooves design with stone ejector

- Reduced heat accumulation and prevents stone pinching
- Good mileage and groove bottom cut resistance



TTM-D28

Size	LI/SS	PR	Rim size	Rim allowance	Inflated Section width mm	Overall diameter mm	Radius under load mm	Load capacity kg/lbs				IP		OTD mm
								Single		Dual		kPa	psi	
11.00R20	150/147K	16	8.00	8.50,8.00V	293	1085	499	3350	7390	3075	6780	830	120	17.5
11.00R20	152/149J	18	8.00	8.50,8.00V	293	1085	499	3550	7830	3250	7160	930	135	17.5
12.00R20	154/151K	18	8.50	8.50V,9.00	315	1125	516	3750	8270	3450	7610	830	120	18.5
12.00R20	156/153J	20	8.50	8.50V,9.00	315	1125	516	4000	8820	3650	8050	900	131	18.5

TTM-D28



Excellent durability with low heat generation and reinforced tire construction



Durability



Mileage



Special tread compound

- Improved compound for tear & cut resistance under mixed road condition
- Long life and good wear performance



Optimized lug tread pattern design

- Creates biting edges for traction under mixed-off road operation
- Excellent handling and control

Reinforced bead construction

- Supports the tire and reduces deformation under heavy load condition
- Offers good load handling capability



Optimized open shoulder design

- Reduced heat accumulation at shoulder area
- Cool running and good traction



TR663

Size	LI/SS	PR	Rim size	Rim allowance	Inflated Section width mm	Overall diameter mm	Radius under load mm	Load capacity kg/lbs		IP		OTD mm
								Single	Dual	kPa	psi	
7.00R16LT	115/111L	12	5.50F	6.00G	200	775	362	1220 2690	1075 2370	670 97	11.5	
7.00R16LT	115/111L	12	5.50F	6.00G	200	775	362	1220 2690	1075 2370	670 97	11.5	
7.00R16LT	118/114L	14	5.50F	6.00G	200	775	362	1320 2910	1180 2600	770 112	11.5	
7.00R16LT	118/114L	14	5.50F	6.00G	200	775	362	1320 2910	1180 2600	770 112	11.5	
7.50R16LT	122/118L	14	6.00G	5.50F,6.50H	215	805	375	1500 3305	1320 2910	770 110	13.5	
8.25R16LT	126/122M	14	6.50H	6.00G,6.50	235	855	397	1700 3750	1500 3305	670 97	15.5	
8.25R16LT	128/124M	16	6.50H	6.00G,6.50	235	855	397	1800 3970	1600 3525	770 112	15.5	
8.25R20	136/134L	14	6.50	6.50T,7.00,7.00T	236	974	452	2240 4940	2120 4675	830 120	15.0	
8.25R20	139/137L	16	6.50	6.50T,7.00,7.00T	236	974	452	2430 5355	2300 5070	930 135	15.0	
9.00R20	141/139K	14	7.00	7.00T,7.50	259	1019	471	2575 5675	2430 5355	790 115	16.0	
9.00R20	144/142K	16	7.00	7.00T,7.50	259	1019	471	2800 6175	2650 5840	900 130	16.0	
10.00R20	149/146K	18	7.50	7.50V,8.00	278	1054	486	3250 7160	3000 6610	930 135	16.5	
10.00R20	149/146K	18	7.50	7.50V,8.00	278	1054	486	3250 7160	3000 6610	930 135	16.5	
11.00R20	150/147K	16	8.00	8.50,8.00V	293	1085	499	3350 7390	3075 6780	830 120	17.5	
11.00R20	152/149K	18	8.00	8.50,8.00V	293	1085	499	3550 7830	3250 7160	930 135	17.5	
12.00R20	154/151K	18	8.50	8.50V,9.00	315	1125	516	3750 8270	3450 7610	830 120	17.5	
12.00R20	156/153K	20	8.50	8.50V,9.00	315	1125	516	4000 8820	3650 8050	900 131	17.5	
12.00R20	158/155J	22	8.50	8.50V,9.00	315	1125	516	4250 9370	3875 8540	970 141	17.5	
9R22.5	136/134L	14	6.75	6.00, 7.50	229	974	457	2240 4940	2120 4675	830 120	14.5	
10R22.5	141/139M	14	7.50	6.75	254	1019	476	2575 5675	2430 5355	790 115	15.0	
10R22.5	144/142L	16	7.50	6.75	254	1019	476	2800 6175	2650 5840	900 130	15.0	
11R22.5	144/142L	14	8.25	7.50	279	1054	491	2800 6175	2650 5840	720 105	18.5	
11R22.5	146/143L	16	8.25	7.50	279	1054	491	3000 6610	2725 6005	830 120	18.5	
12R22.5	150/147L	16	9.00	8.25	300	1085	504	3350 7390	3075 6780	830 120	17.0	
12R22.5	152/149K	18	9.00	8.25	300	1085	504	3550 7830	3250 7160	930 135	17.0	
13R22.5	156/153L	18	9.75	9.00	320	1124	521	4000 8820	3650 8050	875 127	17.5	
13R22.5	156/153L	20	9.75	9.00	320	1124	521	4000 8820	3650 8050	930 135	17.5	
11R24.5	146/143L	14	8.25	7.50	279	1104	516	3000 6610	2725 6005	720 105	18.5	
11R24.5	149/146L	16	8.25	7.50	279	1104	516	3250 7160	3000 6610	830 120	18.5	
315/80R22.5	151/148K	16	9.00	9.75	312	1076	500	3450 7610	3150 6940	760 110	17.5	
315/80R22.5	154/151M	18	9.00	9.75	312	1076	500	3750 8270	3450 7610	830 120	17.5	
315/80R22.5	154/151K	18	9.00	9.75	312	1076	500	3750 8270	3450 7610	830 120	17.5	
315/80R22.5	157/154K	20	9.00	9.75	312	1076	500	4125 9090	3750 8270	900 130	17.5	
255/70R22.5	140/137L	16	7.50	8.25	255	930	435	2500 5510	2300 5070	830 120	17.5	
255/70R22.5	141/138J	16	7.50	8.25	255	930	435	2575 5675	2360 5205	830 120	17.5	
275/70R22.5	148/145L	16	8.25	9.00	276	958	446	3150 6940	2900 6395	860 125	19.0	
275/70R22.5	152/148K	18	8.25	9.00	276	958	446	3550 7830	3150 6940	930 135	19.0	

• LT sizes available

TR663



Excellent all position tire for mixed service



Durability

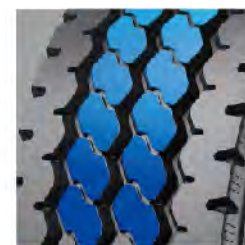


Mileage



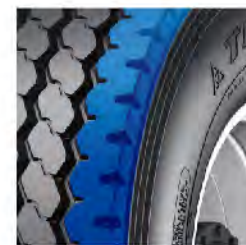
Wide tread width design

- Additional cap gum volume on tread gives big contact patch
- Extra mileage and traction



Main zigzag ribs design

- Offers edge biting for traction under mixed-off road condition
- Excellent handling and control



Reinforced open shoulder ribs design

- Excellent traction and increased rigidity
- Excellent control



TTM-D22



FEATURE:

- Special tread compound
- Optimized lug tread pattern design
- Open shoulder design

ADVANTAGE:

- Improved compound for tear & cut resistance under mixed-off road operation
- Creates biting edges for traction under mixed-off road operation
- Reduced heat accumulation at shoulder area

BENEFIT:

- Long life and good wear
- Excellent handling and control
- Cool running and good traction

Size	LI/SS	PR	Rim size	Rim allowance	Inflated Section width mm	Overall diameter mm	Radius under load mm	Load capacity kg/lbs		IP		OTD mm		
								Single	Dual	kPa	psi			
11.00R20	150/147K	16	8.00	8.50,8.00V	293	1096	499	3350	7390	3075	6780	830	120	21.5
11.00R20	152/149J	18	8.00	8.50,8.00V	293	1096	499	3550	7830	3250	7160	930	135	21.5
12.00R20	152/149K	16★	8.50	8.50V,9.0	315	1136	516	3550	7830	3250	7160	760	110	22.5
12.00R20	154/151K	18	8.50	8.50V,9.00	315	1136	516	3750	8270	3450	7610	830	120	22.5
12.00R20	156/153J	20	8.50	8.50V,9.00	315	1136	516	4000	8820	3650	8050	900	131	22.5



TR618



FEATURE:

- Main zigzag ribs with open shoulder design
- Stone ejectors under the grooves

ADVANTAGE:

- Offers edge biting for traction under mixed road operation
- Prevents stone pinching under mixed road operation

BENEFIT:

- Good handling and control
- Groove bottom cut resistance

Size	LI/SS	PR	Rim size	Rim allowance	Inflated Section width mm	Overall diameter mm	Radius under load mm	Load capacity kg/lbs		IP		OTD mm		
								Single	Dual	kPa	psi			
8.25R16LT	110/105M	6	6.50H	6.00G,6.50	235	855	397	1060	2335	925	2040	320	45	13.0
8.25R16LT	126/122M	14	6.50H	6.00G,6.50	235	855	397	1700	3750	1500	3305	670	97	13.0
8.25R16LT	128/124M	16	6.50H	6.00G,6.50	235	855	397	1800	3970	1600	3525	770	112	13.0
9.00R20	141/139K	14	7.00	7.00T,7.50	259	1019	471	2575	5675	2430	5355	790	115	15.5
9.00R20	141/139L	14	7.00	7.00T,7.50	259	1019	471	2575	5675	2430	5355	790	115	15.5
9.00R20	144/142K	16	7.00	7.00T,7.50	259	1019	471	2800	6175	2650	5840	900	130	15.5
10.00R20	146/143L	16	7.50	7.50V,8.00	278	1054	486	3000	6610	2725	6005	830	120	16.5
10.00R20	146/143K	16	7.50	7.50V,8.00	278	1054	486	3000	6610	2725	6005	830	120	16.5
10.00R20	149/146L	18	7.50	7.50V,8.00	278	1054	486	3250	7160	3000	6610	930	135	16.5
10.00R20	149/146K	18	7.50	7.50V,8.00	278	1054	486	3250	7160	3000	6610	930	135	16.5
10.00R20	149/146K	18	7.50	7.50V,8.00	278	1054	486	3250	7160	3000	6610	930	135	16.5
11.00R20	150/147L	16	8.00	8.50,8.00V	293	1085	499	3350	7390	3075	6780	830	120	17.0
11.00R20	150/147K	16	8.00	8.50,8.00V	293	1085	499	3350	7390	3075	6780	830	120	17.0
11.00R20	152/149L	18	8.00	8.50,8.00V	293	1085	499	3550	7830	3250	7160	930	135	17.0
11.00R20	152/149K	18	8.00	8.50,8.00V	293	1085	499	3550	7830	3250	7160	930	135	17.0
12.00R20	154/151L	18	8.50	8.50V,9.00	315	1125	516	3750	8270	3450	7610	830	120	17.5
12.00R20	154/151K	18	8.50	8.50V,9.00	315	1125	516	3750	8270	3450	7610	830	120	17.5
12.00R20	156/153K	20	8.50	8.50V,9.00	315	1125	516	4000	8820	3650	8050	900	131	17.5
12.00R20	158/155J	22	8.50	8.50V,9.00	315	1125	516	4250	9370	3875	8540	970	141	17.5
11R22.5	146/143L	16	8.25	7.50	279	1054	491	3000	6610	2725	6005	830	120	16.5
12R22.5	150/147L	16	9.00	8.25	300	1085	504	3350	7390	3075	6780	830	120	17.0
12R22.5	152/149K	18	9.00	8.25	300	1085	504	3550	7830	3250	7160	930	135	17.0

• LT sizes available

TR618-I

Size	LI/SS	PR	Rim size	Rim allowance	Inflated Section width mm	Overall diameter mm	Radius under load mm	Load capacity kg/lbs		IP		OTD mm		
								Single	Dual	kPa	psi			
9.00R20	141/139L	14	7.00	7.00T,7.50	259	1019	471	2575	5675	2430	5355	790	115	14.0
9.00R20	144/142L	16	7.00	7.00T,7.50	259	1019	471	2800	6175	2650	5840	900	130	14.0
10.00R20	146/143L	16	7.50	7.50V,8.00	278	1054	486	3000	6610	2725	6005	830	120	15.0
10.00R20	149/146L	18	7.50	7.50V,8.00	278	1054	486	3250	7160	3000	6610	930	135	15.0
10.00R20	149/146K	18	7.50	7.50V,8.00	278	1054	486	3250	7160	3000	6610	930	135	15.0
11.00R20	150/147L	16	8.00	8.50,8.00V	293	1085	499	3350	7390	3075	6780	830	120	15.5
11.00R20	152/149L	18	8.00	8.50,8.00V	293	1085	499	3550	7830	3250	7160	930	135	15.5
12.00R20	154/151L	18	8.50	8.50V,9.00	315	1125	516	3750	8270	3450	7610	830	120	16.0
12.00R24	158/155K	18	8.50	8.50V,9.00	315	1226	572	4250	9370	3875	8540	830	120	16.0
12.00R24	160/157J	20	8.50	8.50V,9.00	315	1226	572	4500	9921	4125	9094	900	131	16.0
12.00R24	160/157K	20	8.50	8.50V,9.00	315	1226	572	4500	9921	4125	9094	900	131	16.0
11R22.5	144/142L	14	8.25	7.50	279	1054	491	2800	6175	2650	5840	720	105	15.0
11R22.5	146/143L	16	8.25	7.50	279	1054	491	3000	6610	2725	6005	830	120	15.0
12R22.5	150/147L	16	9.00	8.25	300	1085	504	3350	7390	3075	6780	830	120	15.5
12R22.5	152/149K	18	9.00	8.25	300	1085	504	3550	7830	3250	7160	930	135	15.5

• TR618-I is the economical pattern on TR618



OFF ROAD

DRIVE



TR916



TR691



TR912



TR918



TR919



TTO-A12

TR912

Size	LI/SS	PR	Rim size	Rim allowance	Inflated Section width mm	Overall diameter mm	Radius under load mm	Load capacity kg/lbs				IP		OTD mm
								Single		Dual		kPa	psi	
9.00R20	144/142F	16	7.00	7.00T,7.50	259	1030	471	2800	6175	2650	5840	900	130	23.0
10.00R20	149/146F	18	7.50	7.50V,8.00	278	1065	486	3250	7160	3000	6610	930	135	24.0
11.00R20	152/149F	18	8.00	8.50,8.00V	293	1096	499	3550	7830	3250	7160	930	135	24.5
12.00R20	154/151F	18	8.50	8.50V,9.00	315	1136	516	3750	8270	3450	7610	830	120	25.5
12.00R20	156/153F	20	8.50	8.50V,9.00	315	1136	516	4000	8820	3650	8050	900	131	25.5
12.00R20	158/155F	22	8.50	8.50V,9.00	315	1136	516	4250	9370	3875	8540	970	141	25.5
295/80R22.5	152/149J	18	9.00	8.25	298	1050	487	3550	7825	3250	7160	900	130	22.5



TR912



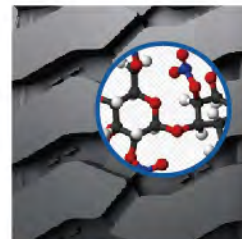
Special compound and pattern designed to conquer tough road conditions



Durability



Anti-cut



- Special tread compound
- Improved compound for tear & cut resistance under off road operation
 - Long life and good wear



- "~" Shape deep block tread pattern design
- Creates big biting edges for traction under off road operation
 - Excellent traction and control



- Open and wide grooves design with stone ejector
- Reduced heat accumulation and prevents stone pinching
 - Good mileage and groove bottom cut resistance



TR918

Size	LI/SS	PR	Rim size	Rim allowance	Inflated Section width mm	Overall diameter mm	Radius under load mm	Load capacity kg/lbs		IP		OTD mm
								Single	Dual	kPa	psi	
9.00R20	144/142F	16	7.00	7.00T,7.50	259	1030	471	2800 6175	2650 5840	900 130		21.5
10.00R20	146/143K	16	7.50	7.50V,8.00	278	1065	486	3000 6610	2725 6005	830 120		22.0
10.00R20	149/146F	18	7.50	7.50V,8.00	278	1065	486	3250 7160	3000 6610	930 135		22.0
10.00R20	149/146K	18	7.50	7.50V,8.00	278	1065	486	3250 7160	3000 6610	930 135		22.0
11.00R20	150/147F	16	8.00	8.50,8.00V	293	1096	499	3350 7390	3075 6780	830 120		23.0
11.00R20	152/149F	18	8.00	8.50,8.00V	293	1096	499	3550 7830	3250 7160	930 135		23.0
12.00R20	154/151F	18	8.50	8.50V,9.00	315	1136	516	3750 8270	3450 7610	830 120		23.5
12.00R20	156/153F	20	8.50	8.50V,9.00	315	1136	516	4000 8820	3650 8050	900 131		23.5
12.00R20	158/155E	22	8.50	8.50V,9.00	315	1136	516	4250 9370	3875 8540	970 141		23.5
12.00R20	158/155F	22	8.50	8.50V,9.00	315	1136	516	4250 9370	3875 8540	970 141		23.5
12R22.5	150/147K	16	9.00	8.25	300	1096	504	3350 7390	3075 6780	830 120		23.0
12R22.5	152/149K	18	9.00	8.25	300	1096	504	3550 7830	3250 7160	930 135		23.0
13R22.5	156/153K	18	9.75	9.00	320	1136	521	4000 8820	3650 8050	875 127		20.0
13R22.5	156/153K	20	9.75	9.00	320	1136	521	4000 8820	3650 8050	930 135		20.0
315/80R22.5	154/151K	18	9.00	9.75	312	1082	500	3750 8270	3450 7610	830 120		22.0
315/80R22.5	157/154K	20	9.00	9.75	312	1082	500	4125 9090	3750 8270	900 130		22.0

TR918



Directional Drive tire with extra durability for tough operation



Durability



Anti-cut



- Special tread compound**
- Improved compound for tear & cut resistance under off road operation
 - Long life and good wear



- Directional pattern design**
- Good traction under off road operation
 - Excellent grip and control

- Strong bead design**
- Prevents bead area issues during off road operation
 - Offers good load handling capability



- Unilateral deep grooves with stone ejector**
- Long life and prevents stone pinching
 - Good mileage and grooves bottom cut resistance



TTO-A12



Durability



Anti-cut

FEATURE:

- Improved tread center design
- New bead design
- High tensile ply cord

ADVANTAGE:

- Creates large center contact patch
- Prevents ply end separation
- Optimized casing toughness

BENEFIT:

- Tread protection
- Good load handling capability
- Strong casing

Size	LI/SS	PR	Rim size	Rim allowance	Inflated Section width mm	Overall diameter mm	Radius under load mm	Load capacity kg/lbs				IP		OTD mm
								Single	Dual	kPa	psi	kPa	psi	
11.00R20	150/147F	16	8.00	8.50,8.00V	293	1096	499	3350	7390	3075	6780	830	120	24.0
11.00R20	152/149F	18	8.00	8.50,8.00V	293	1096	499	3550	7830	3250	7160	930	135	24.0
12.00R20	154/151F	18	8.50	8.50V,9.00	315	1136	516	3750	8270	3450	7610	830	120	24.0
12.00R20	156/153F	20	8.50	8.50V,9.00	315	1136	516	4000	8820	3650	8050	900	131	24.0



TR916



Durability



Anti-cut

FEATURE:

- Improved tread compound
- Wavy pattern design with sub-grooves

ADVANTAGE:

- Improved compound for tear & cut resistance under mixed-off road condition
- Creates more biting edges under mixed-off road condition

BENEFIT:

- Good tread cut resistance
- Good traction

Size	LI/SS	PR	Rim size	Rim allowance	Inflated Section width mm	Overall diameter mm	Radius under load mm	Load capacity kg/lbs				IP		OTD mm
								Single	Dual	kPa	psi	kPa	psi	
7.00R16LT	118/114K	14	5.50F	6.00G	200	775	362	1320	2910	1180	2600	770	112	14.0
7.50R16LT	122/118K	14	6.00G	5.50F,6.50H	215	805	375	1500	3305	1320	2910	770	110	15.0
8.25R16LT	128/124K	16	6.50H	6.00G,6.50	235	855	397	1800	3970	1600	3525	770	112	16.5
9.00R16LT	131/126K	14	6.50H	6.00G,6.50	255	890	416	1950	4300	1700	3750	670	97	18.0
9.00R16LT	134/129K	16	6.50H	6.00G,6.50	255	890	416	2120	4680	1850	4080	770	112	18.0
8.25R20	136/134K	14	6.50	6.50T,7.00T,7.00T	236	974	452	2240	4940	2120	4675	830	120	16.5
8.25R20	139/137K	16	6.50	6.50T,7.00T,7.00T	236	974	452	2430	5355	2300	5070	930	135	16.5
9.00R20	144/142K	16	7.00	7.00T,7.50	259	1019	471	2800	6175	2650	5840	900	130	18.0
10.00R20	146/143K	16	7.50	7.50V,8.00	278	1054	486	3000	6610	2725	6005	830	120	21.0
10.00R20	149/146K	18	7.50	7.50V,8.00	278	1054	486	3250	7160	3000	6610	930	135	21.0
11.00R20	150/147K	16	8.00	8.50,8.00V	293	1085	499	3350	7390	3075	6780	830	120	22.0
11.00R20	152/149K	18	8.00	8.50,8.00V	293	1085	499	3550	7830	3250	7160	930	135	22.0
12.00R20	154/151K	18	8.50	8.50V,9.00	315	1125	516	3750	8270	3450	7610	830	120	22.0
12.00R20	156/153G	20	8.50	8.50V,9.00	315	1125	516	4000	8820	3650	8050	900	131	22.0
12.00R20	158/155F	22	8.50	8.50V,9.00	315	1125	516	4250	9370	3875	8540	970	141	22.0

• LT sizes available



TR691



FEATURE:

- Special tread compound
- "V" Shape deep block tread pattern design
- Open and wide grooves design with stone ejectors

ADVANTAGE:

- Improved compound for tear & cut resistance under off road condition
- Creates big biting edges for traction
- Reduced heat accumulation and prevents stone pinching

BENEFIT:

- Long life and good wear
- Excellent traction and control
- Good mileage and groove bottom cut resistance

Size	LI/SS	PR	Rim size	Rim allowance	Inflated Section width mm	Overall diameter mm	Radius under load mm	Load capacity kg/lbs		IP		OTD mm
								Single	Dual	kPa	psi	
12.00R24	158/155J	18	8.50	8.50V,9.00	315	1238	572	4250 9370	3875 8540	830 120	26.0	
12.00R24	160/157F	20	8.50	8.50V,9.00	315	1238	572	4500 9921	4125 9094	900 131	26.0	
12R22.5	150/147L	16	9.00	8.25	300	1096	504	3350 7390	3075 6780	830 120	19.5	
12R22.5	152/149K	18	9.00	8.25	300	1096	504	3550 7830	3250 7160	930 135	19.5	

TR691E

Size	LI/SS	PR	Rim size	Rim allowance	Inflated Section width mm	Overall diameter mm	Radius under load mm	Load capacity kg/lbs		IP		OTD mm
								Single	Dual	kPa	psi	
8.25R16LT	128/124K	16	6.50H	6.00G,6.50	235	865	397	1800 3970	1600 3525	770 112	15.0	
10.00R20	146/143K	16	7.50	7.50V,8.00	278	1065	486	3000 6610	2725 6005	830 120	19.0	
10.00R20	149/146K	18	7.50	7.50V,8.00	278	1065	486	3250 7160	3000 6610	930 135	19.0	
11.00R20	150/147K	16	8.00	8.50,8.00V	293	1096	499	3350 7390	3075 6780	830 120	19.5	
11.00R20	152/149K	18	8.00	8.50,8.00V	293	1096	499	3550 7830	3250 7160	930 135	19.5	
12.00R20	152/149K	16	8.50	8.50V,9.00	315	1136	516	3550 7830	3250 7160	760 110	20.0	
12.00R20	154/151K	18	8.50	8.50V,9.00	315	1136	516	3750 8270	3450 7610	830 120	20.0	
12.00R20	156/153J	20	8.50	8.50V,9.00	315	1136	516	4000 8820	3650 8050	900 131	20.0	
12.00R20	158/155G	22	8.50	8.50V,9.00	315	1136	516	4250 9370	3875 8540	970 141	20.0	
12.00R20	158/155E	22	8.50	8.50V,9.00	315	1136	516	4250 9370	3875 8540	970 141	20.0	
13.00R20	158/155G	18	9.00	9.00	340	1189	538	4250 9350	3875 8550	790 115	22.0	
14.00R20	164/161F	20	10.00	10.00	375	1253	565	5000 11000	4625 10200	790 115	22.0	
11R22.5	144/142K	14	8.25	7.50	279	1065	491	2800 6175	2650 5840	720 105	19.0	
11R22.5	146/143K	16	8.25	7.50	279	1065	491	3000 6610	2725 6005	830 120	19.0	
11R22.5	148/145K	16+	8.25	7.50	279	1065	491	3150 6940	2900 6395	850 125	19.0	
295/80R22.5	152/148K	16	9.00	8.25	298	1050	487	3550 7825	3150 6945	850 125	19.0	
295/80R22.5	152/149J	18	9.00	8.25	298	1050	487	3550 7825	3250 7160	900 130	19.0	

• LT sizes available

TR691-JS

Size	LI/SS	PR	Rim size	Rim allowance	Inflated Section width mm	Overall diameter mm	Radius under load mm	Load capacity kg/lbs		IP		OTD mm
								Single	Dual	kPa	psi	
9.00R20	144/142F	16	7.00	7.00T,7.50	259	1030	471	2800 6175	2650 5840	900 130	23.0	
10.00R20	149/146F	18	7.50	7.50V,8.00	278	1065	486	3250 7160	3000 6610	930 135	24.5	
11.00R20	150/147F	16	8.00	8.50,8.00V	293	1096	499	3350 7390	3075 6780	830 120	25.0	
11.00R20	152/149F	18	8.00	8.50,8.00V	293	1096	499	3550 7830	3250 7160	930 135	25.0	
12.00R20	154/151F	18	8.50	8.50V,9.00	315	1136	516	3750 8270	3450 7610	830 120	25.5	
12.00R20	156/153F	20	8.50	8.50V,9.00	315	1136	516	4000 8820	3650 8050	900 131	25.5	
12.00R20	158/155F	22	8.50	8.50V,9.00	315	1136	516	4250 9370	3875 8540	970 141	25.5	
11R22.5	144/142K	14	8.25	7.50	279	1065	491	2800 6175	2650 5840	720 105	24.0	
11R22.5	146/143K	16	8.25	7.50	279	1065	491	3000 6610	2725 6005	830 120	24.0	
11R24.5	146/143K	14	8.25	7.50	279	1116	516	3000 6610	2725 6005	720 105	24.0	
11R24.5	149/146K	16	8.25	7.50	279	1116	516	3250 7160	3000 6610	830 120	24.0	

• TR691-JS offers deeper OTD



TR919



Durability Anti-cut



FEATURE:

- Special tread compound
- Low void ratio “~” tread pattern design
- Enhanced shoulder area

ADVANTAGE:

- Improved compound for tear & cut resistance under rocky road condition
- For tough rocky working operation
- Strong shoulder to prevent damage under rocky operation

BENEFIT:

- Long life and wear
- Tread cut resistance
- Protects casing from cut and other damages

Size	LI/SS	PR	Rim size	Rim allowance	Inflated Section width mm	Overall diameter mm	Radius under load mm	Load capacity kg/lbs		IP		OTD mm
								Single	Dual	kPa	psi	
7.50R16LT	122/118J	14	6.00G	5.50F,6.50H	215	815	375	1500 3305	1320 2910	770 110	16.5	
8.25R16LT	128/124K	16	6.50H	6.00G,6.50	235	865	397	1800 3970	1600 3525	770 112	17.0	
8.25R20	136/134G	14	6.50	6.50T,7.00,7.00T	236	986	452	2240 4940	2120 4675	830 120	20.0	
8.25R20	139/137G	16	6.50	6.50T,7.00,7.00T	236	986	452	2430 5355	2300 5070	930 135	20.0	
9.00R20	144/142F	16	7.00	7.00T,7.5	259	1030	471	2800 6175	2650 5840	900 130	23.0	
10.00R20	149/146F	18	7.50	7.50V,8.00	278	1065	486	3250 7160	3000 6610	930 135	24.0	
11.00R20	152/149F	18	8.00	8.50,8.00V	293	1096	499	3550 7830	3250 7160	930 135	24.0	
12.00R20	154/151F	18	8.50	8.50V,9.00	315	1136	516	3750 8270	3450 7610	830 120	24.0	
12.00R20	156/153F	20	8.50	8.50V,9.00	315	1136	516	4000 8820	3650 8050	900 131	24.0	
12.00R20	158/155F	22	8.50	8.50V,9.00	315	1136	516	4250 9370	3875 8540	970 141	24.0	
12.00R20	158/155F	22	8.50	8.50V,9.00	315	1136	516	4250 9370	3875 8540	970 141	24.0	
14.00R20	—	NHS **	10.00	10.00	375	1253	565	5000 11000	— —	700 102	27.0	

• LT sizes available

TR919+

Size	LI/SS	PR	Rim size	Rim allowance	Inflated Section width mm	Overall diameter mm	Radius under load mm	Load capacity kg/lbs		IP		OTD mm
								Single	Dual	kPa	psi	
11.00R20	152/149F	18	8.00	8.50,8.00V	293	1096	499	3550 7830	3250 7160	930 135	24.0	
12.00R20	152/149F	16★	8.50	8.50V,9.00	315	1136	516	3550 7830	3250 7160	760 110	24.0	
12.00R20	154/151F	18	8.50	8.50V,9.00	315	1136	516	3750 8270	3450 7610	830 120	24.0	
12.00R20	156/153F	20	8.50	8.50V,9.00	315	1136	516	4000 8820	3650 8050	900 131	24.0	
12.00R20	158/155F	22	8.50	8.50V,9.00	315	1136	516	4250 9370	3875 8540	970 141	24.0	

• TR919+ offers deeper OTD



WINTER

ALL POSITION



TRD97



TRD99



TRD88



TRD97 ❄️



Control



Safety

FEATURE:

- Special winter compound
- Zigzag grooves with open shoulder and sipes
- Wide tread width design

ADVANTAGE:

- Improves grip and control in winter
- Creates traction and grip on road
- Creates large contact patch

BENEFIT:

- Safety
- Good control for safe driving
- Good handling on road



TRD99 ❄️



Control



Safety

FEATURE:

- Special winter compound
- Big block design with open shoulder and sipes
- Wide tread width design

ADVANTAGE:

- Improved grip and control in winter
- Creates traction and grip on road
- Creates large contact patch

BENEFIT:

- Safety
- Good control for safe driving
- Good handling on road

Size	LI/SS	PR	Rim size	Rim allowance	Inflated Section width mm	Overall diameter mm	Radius under load mm	Load capacity kg/lbs				IP		OTD mm
								Single		Dual		kPa	psi	
11R22.5	144/142L	14	8.25	7.50	279	1054	491	2800	6175	2650	5840	720	105	21.5
11R22.5	146/143L	16	8.25	7.50	279	1054	491	3000	6610	2725	6005	830	120	21.5
11R24.5	146/143L	14	8.25	7.50	279	1104	516	3000	6610	2725	6005	720	105	21.5
11R24.5	149/146L	16	8.25	7.50	279	1104	516	3250	7160	3000	6610	830	120	21.5

Size	LI/SS	PR	Rim size	Rim allowance	Inflated Section width mm	Overall diameter mm	Radius under load mm	Load capacity kg/lbs				IP		OTD mm
								Single		Dual		kPa	psi	
7.00R16LT	115/111K	12	5.50F	6.00G	200	775	362	1220	2690	1075	2370	670	97	14.5
7.00R16LT	118/114K	14	5.50F	6.00G	200	775	362	1320	2910	1180	2600	770	112	14.5
7.50R16LT	122/118K	14	6.00G	5.50F,6.50H	215	805	375	1500	3305	1320	2910	770	110	14.5
8.25R16LT	126/122K	14	6.50H	6.00G,6.50	235	855	397	1700	3750	1500	3305	670	97	14.5
8.25R16LT	128/124K	16	6.50H	6.00G,6.50	235	855	397	1800	3970	1600	3525	770	112	14.5



TRD88 ❄️



Control



Safety

FEATURE:

- Special winter compound
- 6 block rib design
- Connection bars between blocks

ADVANTAGE:

- Improved grip and control in winter
- Creates traction and grip on road
- Creates block stiffness

BENEFIT:

- Safety
- Good control for safe driving
- Good grip for safe driving



LIGHT TRUCK

DRIVE

ALL POSITION



TR689A



TR685



TRA02



TR656



TR558



TR693

Size	LI/SS	PR	Rim size	Rim allowance	Inflated Section width mm	Overall diameter mm	Radius under load mm	Load capacity kg/lbs		IP		OTD mm
								Single	Dual	kPa	psi	
7.50R20	130/128K	14	6.00	6.50,6.50T	215	935	435	1900 4190	1800 3970	830 120	14.0	
8.25R20	136/134K	14	6.50	6.50T,7.00,7.00T	236	974	452	2240 4940	2120 4675	830 120	15.5	
8.25R20	139/137K	16	6.50	6.50T,7.00,7.00T	236	974	452	2430 5355	2300 5070	930 135	15.5	
9.00R20	141/139K	14	7.00	7.00T,7.50	259	1019	471	2575 5675	2430 5355	790 115	15.5	
9.00R20	144/142K	16	7.00	7.00T,7.50	259	1019	471	2800 6175	2650 5840	900 130	15.5	
10.00R20	146/143K	16	7.50	7.50V,8.00	278	1054	486	3000 6610	2725 6005	830 120	16.5	
10.00R20	149/146K	18	7.50	7.50V,8.00	278	1054	486	3250 7160	3000 6610	930 135	16.5	
11.00R20	150/147K	16	8.00	8.50,8.00V	293	1085	499	3350 7390	3075 6780	830 120	17.0	
11.00R20	152/149K	18	8.00	8.50,8.00V	293	1085	499	3550 7830	3250 7160	930 135	17.0	
12.00R20	154/151K	18	8.50	8.50V,9.00	315	1125	516	3750 8270	3450 7610	830 120	17.5	
12.00R20	156/153K	20	8.50	8.50V,9.00	315	1125	516	4000 8820	3650 8050	900 131	17.5	
8R22.5	130/128L	14	6.00	5.25,6.75	203	935	440	1900 4190	1800 3970	830 120	14.0	
9R22.5	136/134L	14	6.75	6.00,7.50	229	974	457	2240 4940	2120 4675	830 120	15.5	
10R22.5	141/139L	14	7.50	6.75	254	1019	476	2575 5675	2430 5355	790 115	15.5	
10R22.5	144/142L	16	7.50	6.75	254	1019	476	2800 6175	2650 5840	900 130	15.5	
11R22.5	144/142L	14	8.25	7.50	279	1054	491	2800 6175	2650 5840	720 105	16.5	
11R22.5	146/143L	16	8.25	7.50	279	1054	491	3000 6610	2725 6005	830 120	16.5	
12R22.5	150/147L	16	9.00	8.25	300	1085	504	3350 7390	3075 6780	830 120	17.0	
12R22.5	152/149K	18	9.00	8.25	300	1085	504	3550 7830	3250 7160	930 135	17.0	
295/80R22.5	152/148L	16	9.00	8.25	298	1044	487	3550 7825	3150 6945	850 125	17.0	



TR689A

Size	LI/SS	PR	Rim size	Rim allowance	Inflated Section width mm	Overall diameter mm	Radius under load mm	Load capacity kg/lbs				IP		OTD mm
								Single		Dual		kPa	psi	
8.25R16LT	126/122M	14	6.50H	6.00G,6.50	235	855	397	1700	3750	1500	3305	670	97	15.0
215/75R17.5	126/124M	14	6.00	6.75	211	767	359	1700	3750	1600	3530	700	100	16.0
215/75R17.5	127/124M	16	6.00	6.75	211	767	359	1750	3860	1600	3530	830	120	16.0
215/75R17.5	135/133L	16	6.00	6.75	211	767	359	2180	4805	2060	4540	860	125	16.0
215/75R17.5	136/134J	18	6.00	6.75	211	767	359	2240	4940	2120	4675	890	130	16.0
235/75R17.5	132/129M	16	6.75	7.50	233	797	372	2000	4410	1850	4080	830	120	16.0
235/75R17.5	141/140J	16	6.75	7.50	233	797	372	2575	5675	2500	5510	850	123	16.0
235/75R17.5	143/141J	18	6.75	7.50	233	797	372	2725	6005	2575	5675	860	125	16.0
225/70R19.5	125/123M	12	6.75	6.00	226	811	382	1650	3640	1550	3415	660	95	17.5
225/70R19.5	128/126L	14	6.75	6.00	226	811	382	1800	3970	1700	3750	760	110	17.5
225/70R19.5	143/141J	18	6.75	6.00	226	811	382	2725	6005	2575	5675	860	125	17.5
245/70R19.5	133/131L	14	7.50	6.75	248	839	391	2060	4540	1950	4300	760	110	17.5
245/70R19.5	135/133L	16	7.50	6.75	248	839	391	2180	4805	2060	4540	830	120	17.5
245/70R19.5	136/134M	16	7.50	6.75	248	839	391	2240	4940	2120	4675	830	120	17.5
245/70R19.5	141/140J	18	7.50	6.75	248	839	391	2575	5675	2500	5510	850	125	17.5

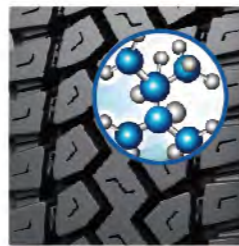
TR689A



Excellent traction and wear on your drive axle



- Wear
Resistance
- Mileage
- Economy



Cool running compound for drive tire

- Low heat generation
- High speed performance at deep OTD



Innovative tread design

- Scrub resistance in handling and cornering
- Good lateral traction

Enhanced casing package

- Strong casing improves toughness
- Improved retreadability



TR685

Size	LI/SS	PR	Rim size	Rim allowance	Inflated Section width mm	Overall diameter mm	Radius under load mm	Load capacity kg/lbs				IP		OTD mm
								Single		Dual		kPa	psi	
8.25R16LT	126/122M	14	6.50H	6.00G,6.50	235	865	397	1700	3750	1500	3305	670	97	13.0
8.25R16LT	128/124M	16	6.50H	6.00G,6.50	235	865	397	1800	3970	1600	3525	770	112	13.0
9.5R17.5	129/127L	14	6.75	6.00	240	850	391	1850	4080	1750	3860	750	109	15.0
9.5R17.5	143/141J	18	6.75	6.00	240	850	391	2725	6005	2575	5675	875	127	15.0
8R19.5	124/122K	12	6.00	5.25,6.75	203	871	402	1600	3525	1500	3305	760	110	13.0
8R19.5	127/125L	14	6.00	5.25,6.75	203	871	402	1750	3860	1650	3640	850	125	13.0
8R22.5	130/128M	14	6.00	5.25,6.75	203	947	440	1900	4190	1800	3970	830	120	13.0
205/75R17.5	122/120M	12	6.00	5.25	205	753	353	1500	3305	1400	3085	675	98	12.0
205/75R17.5	124/122M	14	6.00	5.25	205	753	353	1600	3525	1500	3305	750	109	12.0
205/75R17.5	126/124M	16	6.00	5.25	205	753	353	1700	3750	1600	3525	810	117	12.0
215/75R17.5	126/124M	14	6.00	6.75	211	773	359	1700	3750	1600	3530	700	100	14.0
215/75R17.5	127/124M	16	6.00	6.75	211	773	359	1750	3860	1600	3530	830	120	14.0
215/75R17.5	135/133L	16	6.00	6.75	211	773	359	2180	4805	2060	4540	860	125	14.0
215/75R17.5	136/134J	18	6.00	6.75	211	773	359	2240	4940	2120	4675	890	130	14.0
225/75R17.5	127/125M	14	6.75	6.00	226	789	366	1750	3860	1650	3640	760	110	14.5
225/75R17.5	129/127M	16	6.75	6.00	226	789	366	1850	4080	1750	3860	830	120	14.5
225/75R17.5	131/129L	18	6.75	6.00	226	789	366	1950	4300	1850	4080	790	115	14.5
235/75R17.5	132/129M	16	6.75	7.50	233	803	372	2000	4410	1850	4080	830	120	14.0
235/75R17.5	141/140J	16	6.75	7.50	233	803	372	2575	5675	2500	5510	850	123	14.0
235/75R17.5	143/141J	18	6.75	7.50	233	803	372	2725	6005	2575	5675	860	125	14.0
225/70R19.5	125/123M	12	6.75	6.00	226	817	382	1650	3640	1550	3415	660	95	14.5
225/70R19.5	128/126L	14	6.75	6.00	226	817	382	1800	3970	1700	3750	760	110	14.5
225/70R19.5	143/141J	18	6.75	6.00	226	817	382	2725	6005	2575	5675	860	125	14.5

TR685



All position tire with super wear



- Wear
Resistance
- Mileage
- Economy



- Enhanced tread compound**
- High scrub resistance under regional haul operation
 - Good wear performance and mileage



- Strong closed shoulder ribs**
- Prevents irregular shoulder wear in cornering and handling
 - Even wear and long wear life



- Special sipe design**
- Excellent traction in wet road condition
 - Excellent handling in wet road condition



TRA02

Size	LI/SS	PR	Rim size	Rim allowance	Inflated Section width mm	Overall diameter mm	Radius under load mm	Load capacity kg/lbs				IP		OTD mm
								Single		Dual		kPa	psi	
7.00R16LT	107/102M	8	5.50F	6.00G	200	775	362	975	2150	850	1875	460	67	11.0
7.00R16LT	111/107M	10	5.50F	6.00G	200	775	362	1090	2405	975	2150	560	80	11.0
7.00R16LT	115/111M	12	5.50F	6.00G	200	775	362	1220	2690	1075	2370	670	97	11.0
7.00R16LT	118/114L	14	5.50F	6.00G	200	775	362	1320	2910	1180	2600	770	112	11.0
7.50R16LT	112/107L	8	6.00G	5.50F,6.50H	215	805	375	1120	2470	975	2150	460	65	12.5
7.50R16LT	122/118L	14	6.00G	5.50F,6.50H	215	805	375	1500	3305	1320	2910	770	110	12.5
195/85R16LT	114/112L	12	5 1/2 J	5J,6J	196	738	344	1180	2600	1120	2470	650	95	10.5
205/85R16LT	117/115L	12	5 1/2 J	5J,6J	203	754	351	1285	2835	1215	2680	650	95	10.5
215/85R16LT	120/118L	12	6J	5 1/2J,6 1/2J	216	772	359	1400	3085	1320	2910	650	95	11.0
8.5R17.5	121/120M	12	6.00	5.25,6.75	215	802	374	1450	3195	1400	3085	625	90	12.5
215/70R17.5	118/116M	10	6.00	6.75	211	747	348	1320	2910	1250	2755	600	87	11.0
215/70R17.5	121/119M	12	6.00	6.75	211	747	348	1450	3195	1360	3000	660	95	11.0
215/70R17.5	123/121M	14	6.00	6.75	211	747	348	1550	3415	1450	3195	760	110	11.0

TRA02

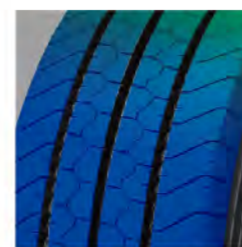


All position tire with excellent wear



Wide tread width design

- Additional cap gum volume on tread gives big contact patch
- Extra mileage and traction



Optimized rib stiffness and strong shoulder ribs

- Maintains center and shoulder rib toughness under regional haul operation
- Good wear performance and even wear



Steel blade sipe design

- Provides excellent grip and control in wet road condition
- Good handling and braking in wet road condition



TR558



- Wear Resistance
- Mileage
- Economy

FEATURE:

- Straight ribs design
- Wavy grooves design
- Enhanced casing package

ADVANTAGE:

- Lower rolling resistance and noise for long haul operation
- Prevents stone pinching and groove crack
- Improved casing toughness

BENEFIT:

- Fuel efficiency
- Avoids stone on road and optimized for long mileage
- Good retreadability



TR656



- Wear Resistance
- Mileage
- Economy

FEATURE:

- Zigzag grooves design with siping
- Wide closed shoulder ribs design
- Enhanced casing package

ADVANTAGE:

- Comfortable at driving
- Scrub resistance in cornering
- Improved casing toughness

BENEFIT:

- Good wet and dry traction
- Even wear and long life
- Good retreadability

Size	LI/SS	PR	Rim size	Rim allowance	Inflated Section width mm	Overall diameter mm	Radius under load mm	Load capacity kg/lbs				IP		OTD mm
								Single		Dual		kPa	psi	
7.00R16LT	115/111M	12	5.50F	6.00G	200	775	362	1220	2690	1075	2370	670	97	12.5
7.00R16LT	118/114L	14	5.50F	6.00G	200	775	362	1320	2910	1180	2600	770	112	12.5
7.50R16LT	122/118L	14	6.00G	5.50F,6.50H	215	805	375	1500	3305	1320	2910	770	110	13.0

Size	LI/SS	PR	Rim size	Rim allowance	Inflated Section width mm	Overall diameter mm	Radius under load mm	Load capacity kg/lbs				IP		OTD mm
								Single		Dual		kPa	psi	
ST235/85R16	129/125L	14	6.50	6J, 7J, 6K, 7K, 6L, 7L, 6 1/2J, 7 1/2J, 6 1/2L	235	806	—	1850	4080	1650	3640	750	110	10.5
LT235/85R16	126/123L	14	6.50	6J, 7J	235	806	373	1700	3750	1550	3415	750	110	10.5
8.5R17.5	121/120M	12	6.00	5.25,6.75	215	802	374	1450	3195	1400	3085	625	90	12.0
8.5R17.5	121/120L	12	6.00	5.25,6.75	215	802	374	1450	3195	1400	3085	625	90	12.0
9.5R17.5	129/127L	14	6.75	6.00	240	842	391	1850	4080	1750	3860	750	109	14.0
9.5R17.5	143/141J	18	6.75	6.00	240	842	391	2725	6005	2575	5675	875	127	14.0
8R19.5	124/122K	12	6.00	5.25, 6.75	203	859	402	1600	3525	1500	3305	760	110	13.0
8R19.5	127/125L	14	6.00	5.25, 6.75	203	859	402	1750	3860	1650	3640	850	125	13.0



TR693



- Wear
Resistance
- Mileage
- Economy

FEATURE:

- 4 zigzag grooves design
- Closed shoulder ribs

ADVANTAGE:

- Comfortable at driving
- Improved scrub resistance

BENEFIT:

- Good wet and dry traction
- Long life and mileage



Size	LI/SS	PR	Rim size	Rim allowance	Inflated Section width mm	Overall diameter mm	Radius under load mm	Load capacity kg/lbs				IP		OTD mm
								Single		Dual		kPa	psi	
7.50R16LT	122/118L	14	6.00G	5.50F,6.50H	215	805	375	1500	3305	1320	2910	770	110	12.5

COACH

ALL POSITION



TRC03



TBH-A11



TBH-A12



TRC03

Size	LI/SS	PR	Rim size	Rim allowance	Inflated Section width mm	Overall diameter mm	Radius under load mm	Load capacity kg/lbs		IP		OTD mm
								Single	Dual	kPa	psi	
295/80R22.5	152/149M	18	9.00	8.25	298	1044	487	3550 7825	3250 7160	900 130	16.0	
295/80R22.5	154/151M	18	9.00	8.25	298	1044	487	3750 8270	3450 7610	900 130	16.0	
315/80R22.5	154/151M	18	9.00	9.75	312	1076	500	3750 8270	3450 7610	830 120	16.0	
315/80R22.5	157/154L	20	9.00	9.75	312	1076	500	4125 9090	3750 8270	900 130	16.0	



TRC03



Excellent wear, low noise and comfort driving experience



Comfort



Mileage



Safety



Fuel saving



Innovative tread compound

- Reduced rolling resistance
- Fuel saving



Stone ejector under center grooves

- Prevents stone pinching
- Safety and long mileage



Steel blade tread design

- Optimized pitch sequence
- Provides more biting edges
- Reduce noise
- Excellent handling and braking in wet condition
- Comfortable driving experience



Four main wavy grooves

- Effective water evasion and stone ejection
- Safety and long mileage

TBH-A11



FEATURE:

- Special tread compound
- Steel blade tread design
- Four main wavy grooves
- Stone ejectors under center grooves
- Optimized pitch sequence

ADVANTAGE:

- Reduced rolling resistance
- Provides more biting edges
- Effective water evasion and stone ejection
- Prevents stone pinching
- Reduced noise

BENEFIT:

- Fuel saving
- Excellent handling and braking in wet condition
- Safety and mileage
- Prevents stone drilling
- Comfortable driving experience

Size	LI/SS	PR	Rim size	Rim allowance	Inflated Section width mm	Overall diameter mm	Radius under load mm	Load capacity kg/lbs		IP		OTD mm
								Single	Dual	kPa	psi	
295/80R22.5	152/149M	18	9.00	8.25	298	1044	487	3550 7825	3250 7160	900 130	14.5	

TBH-A12



FEATURE:

- Special tread compound
- Steel blade tread design
- Four main wavy grooves
- Optimized pitch sequence

ADVANTAGE:

- Reduced rolling resistance
- Provides more biting edges
- Effective water evasion and stone ejection
- Reduced noise

BENEFIT:

- Fuel saving
- Excellent handling and braking in wet condition
- Safety and mileage
- Comfortable driving experience

Size	LI/SS	PR	Rim size	Rim allowance	Inflated Section width mm	Overall diameter mm	Radius under load mm	Load capacity kg/lbs		IP		OTD mm
								Single	Dual	kPa	psi	
11R22.5	146/143M	16	8.25	7.50	279	1054	491	3000 6610	2725 6005	830 120	16.5	



URBAN BUS

DRIVE

ALL POSITION



TBC-D11



TBC-A21



TBC-A11



TR615



TR685



TBC-A11

Size	LI/SS	PR	Rim size	Rim allowance	Inflated Section width mm	Overall diameter mm	Radius under load mm	Load capacity kg/lbs				IP		OTD mm
								Single		Dual		kPa	psi	
265/70R19.5	137/134J	14	7.50	8.25	262	867	402	2300	5070	2120	4675	760	110	18.0
265/70R19.5	140/138J	16	7.50	8.25	262	867	402	2500	5510	2360	5205	775	112	18.0
265/70R19.5	143/141J	18	7.50	8.25	262	867	402	2725	6005	2575	5675	850	123	18.0
255/70R22.5	140/137J	16	7.50	8.25	255	930	435	2500	5510	2300	5070	830	120	17.5
275/70R22.5	148/145J	16	8.25	9.00	276	958	446	3150	6940	2900	6395	860	125	17.7
275/70R22.5	152/148J	18	8.25	9.00	276	958	446	3550	7830	3150	6940	930	135	17.7
305/70R22.5	150/148J	18	9.00	8.25	305	1000	464	3350	7390	3150	6940	850	123	20.0
305/70R22.5	153/150J	20	9.00	8.25	305	1000	464	3650	8050	3350	7390	900	130	20.0

TBC-A11

Excellent handling and good mileage



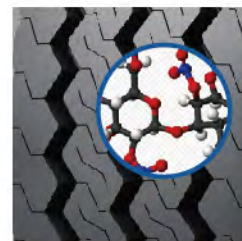
Control



Safety



Economy



Enhanced tread compound

- High scrub resistance under urban operation
- Good wear performance and mileage



4 strong rib design with sipes

- Good wear performance in cornering and handling under dry/wet condition
- Good handling and safety

Optimized casing package

- Increased casing toughness
- Improved retreadability



Sidewall reinforced

- Prevents curb damage to protect casing
- Safety and improved retreadability

TR615

Size	LI/SS	PR	Rim size	Rim allowance	Inflated Section width mm	Overall diameter mm	Radius under load mm	Load capacity kg/lbs				IP		OTD mm
								Single		Dual		kPa	psi	
11R22.5	146/143J	16	8.25	7.50	279	1054	491	3000	6610	2725	6005	830	120	19.0
11R22.5	148/145J	16+	8.25	7.50	279	1054	491	3150	6940	2900	6395	850	125	19.0
11R22.5	149/146J	18	8.25	7.50	279	1054	491	3250	7160	3000	6610	930	135	19.0
295/80R22.5	152/149L	18	9.00	8.25	298	1044	487	3550	7825	3250	7160	900	130	15.0
275/70R22.5	148/145J	16	8.25	9.00	276	958	446	3150	6940	2900	6395	860	125	19.0
275/70R22.5	148/145J	16	8.25	9.00	276	958	446	3150	6940	2900	6395	860	125	19.0
275/70R22.5	152/148J	18	8.25	9.00	276	958	446	3550	7830	3150	6940	930	135	19.0
275/70R22.5	152/148J	18	8.25	9.00	276	958	446	3550	7830	3150	6940	930	135	19.0
265/55R17.5	136J	18	8.25	8.25	264	737	347	2240	4940	—	—	900	131	16.5

• 275/70R22.5 sidewall reinforced products are available



TR615



Good wear and mileage



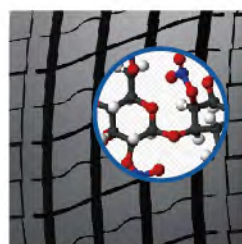
Control



Safety

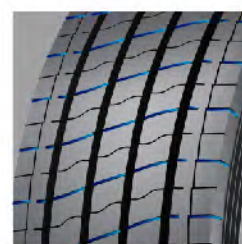


Economy



Enhanced tread compound

- High scrub resistance under urban operation
- Good wear performance and mileage



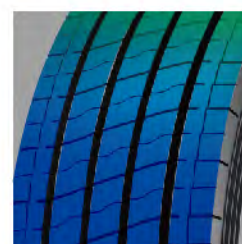
4 straight design with sipes

- Good go & stop and cornering performance
- Good handling and safety



Reinforced sidewall

- Prevents curb damage to protect casing
- Safety and improved retreadability



Strong shoulder ribs

- Prevents unexpected side force damage under urban operation
- Even wear and good control



TR685

Size	LI/SS	PR	Rim size	Rim allowance	Inflated Section width mm	Overall diameter mm	Radius under load mm	Load capacity kg/lbs				IP		OTD mm
								Single		Dual		kPa	psi	
9.5R17.5	129/127L	14	6.75	6.00G 6.50	240	842	391	1850	4080	1750	3860	750	109	15.0
9.5R17.5	143/141J	18	6.75	6.00G 6.50	240	842	391	2725	6005	2575	5675	875	127	15.0
8R19.5	124/122K	12	6.00	6.00	203	859	402	1600	3525	1500	3305	760	110	13.0
8R19.5	127/125L	14	6.00	6.00	203	859	402	1750	3860	1650	3640	850	125	13.0
8R22.5	130/128M	14	6.00	5.25, 6.75	203	935	440	1900	4190	1800	3970	830	120	13.0
9R22.5	136/134L	14	6.75	5.25, 6.75	229	974	457	2240	4940	2120	4675	830	120	14.0
9R22.5	136/134M	14	6.75	5.25, 6.75	229	974	457	2240	4940	2120	4675	830	120	14.0
10R22.5	141/139M	14	7.50	6.00, 7.50	254	1019	476	2575	5675	2430	5355	790	115	15.0
10R22.5	144/142L	16	7.50	6.00, 7.50	254	1019	476	2800	6175	2650	5840	900	130	15.0
10R22.5	144/142M	16	7.50	6.75	254	1019	476	2800	6175	2650	5840	900	130	15.0
11R22.5	144/142M	14	8.25	6.75	279	1054	491	2800	6175	2650	5840	720	105	15.0
11R22.5	146/143M	16	8.25	6.75	279	1054	491	3000	6610	2725	6005	830	120	15.0
11R22.5	148/145M	16+	8.25	7.50	279	1054	491	3150	6940	2900	6395	850	125	15.0
11R22.5	149/146M	18	8.25	7.50	279	1054	491	3250	7160	3000	6610	930	135	15.0
205/75R17.5	122/120M	12	6.00	7.50	205	753	353	1500	3305	1400	3085	675	98	12.0
205/75R17.5	124/122M	14	6.00	7.50	205	753	353	1600	3525	1500	3305	750	109	12.0
205/75R17.5	126/124M	16	6.00	5.25	205	753	353	1700	3750	1600	3525	810	117	12.0
215/75R17.5	126/124M	14	6.00	5.25	211	767	359	1700	3750	1600	3530	700	100	14.0
215/75R17.5	127/124M	16	6.00	5.25	211	767	359	1750	3860	1600	3530	830	120	14.0
215/75R17.5	135/133L	16	6.00	6.75	211	767	359	2180	4805	2060	4540	860	125	14.0
215/75R17.5	136/134J	18	6.00	6.75	211	767	359	2240	4940	2120	4675	890	130	14.0
225/75R17.5	127/125M	14	6.75	6.75	226	783	366	1750	3860	1650	3640	760	110	14.5
225/75R17.5	129/127M	16	6.75	6.75	226	783	366	1850	4080	1750	3860	830	120	14.5
225/75R17.5	131/129L	18	6.75	6.00	226	783	366	1950	4300	1850	4080	790	115	14.5
235/75R17.5	132/129M	16	6.75	6.00	233	797	372	2000	4410	1850	4080	830	120	14.0
235/75R17.5	141/140J	16	6.75	6.00	233	797	372	2575	5675	2500	5510	850	123	14.0
235/75R17.5	143/141J	18	6.75	7.50	233	797	372	2725	6005	2575	5675	860	125	14.0
225/70R19.5	125/123M	12	6.75	7.50	226	811	382	1650	3640	1550	3415	660	95	14.5
225/70R19.5	128/126L	14	6.75	7.50	226	811	382	1800	3970	1700	3750	760	110	14.5
225/70R19.5	143/141J	18	6.75	6.00	226	811	382	2725	6005	2575	5675	860	125	14.5
245/70R17.5	136/134M	16	7.50	6.00	248	789	364	2240	4940	2120	4675	850	123	13.5
245/70R17.5	143/141J	18	7.50	6.00	248	789	364	2725	6005	2575	5675	875	127	13.5
245/70R19.5	133/131L	14	7.50	6.75	248	839	391	2060	4540	1950	4300	760	110	14.5
245/70R19.5	135/133L	16	7.50	6.75	248	839	391	2180	4805	2060	4540	830	120	14.5
245/70R19.5	136/134M	16	7.50	6.75	248	839	391	2240	4940	2120	4675	830	120	14.5
245/70R19.5	141/140J	18	7.50	6.75	248	839	391	2575	5675	2500	5510	850	125	14.5
285/70R19.5	146/144L	18	8.25	6.75	283	895	413	3000	6610	2800	6175	850	123	13.5
285/70R19.5	150/148J	18	8.25	6.75	283	895	413	3350	7390	3150	6940	900	130	13.5
305/70R19.5	144/141M	16	9.00	9.00	305	923	425	2800	6175	2575	5675	760	110	15.0
305/70R19.5	146/143M	18	9.00	9.00	305	923	425	3000	6610	2725	6005	830	120	15.0
305/70R19.5	148/145L	20	9.00	8.25	305	923	425	3150	6940	2900	6395	900	130	15.0
255/70R22.5	140/137M	16	7.50	8.25	255	930	435	2500	5510	2300	5070	830	120	14.5
315/70R22.5	149/146M	16	9.00	8.25	312	1014	469	3250	7160	3000	6610	760	110	16.0
315/70R22.5	151/148M	18	9.00	8.25	312	1014	469	3450	7610	3150	6940	830	120	16.0
315/70R22.5	152/148M (154/150L)	16	9.00	9.75	312	1014	469	3550	7830	3150	6940	830	120	16.0

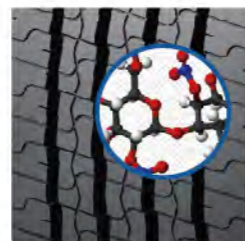
TR685



Excellent handling and good mileage



- 
Control
- 
Safety
- 
Economy



- Enhanced tread compound
- High scrub resistance under urban operation
 - Good wear performance and mileage



- Strong closed shoulder ribs
- Prevents irregular shoulder wear in cornering and handling
 - Even wear and long wear life



- Special sipe design
- Excellent traction in wet road condition
 - Excellent handling in wet road condition



TBC-A21



- Control
- Safety
- Economy

FEATURE:

- Enhanced tread compound
- 4 zigzag grooves design with rib sipes
- Improved belt construction
- Optimized casing package

ADVANTAGE:

- High scrub resistance under urban operation
- Good traction and prevents unexpected side force under urban operation
- Improved tread toughness
- Improved casing toughness

BENEFIT:

- Good wear performance and mileage
- Even wear and good control
- Good handling and retreadability
- Improved retreadability



TBC-D11



- Control
- Safety
- Economy

FEATURE:

- Deep OTD
- Center diamond shape design deep zigzag grooves
- Reinforced sidewall
- Optimized casing package

ADVANTAGE:

- Offers long life
- Excellent traction
- Prevents heat accumulating under deep OTD
- Prevents curb damage to protect casing
- Improved casing toughness

BENEFIT:

- Long Mileage
- Good controlling
- Cool running
- Safety and retreadability
- Improved retreadability

Size	LI/SS	PR	Rim size	Rim allowance	Inflated Section width mm	Overall diameter mm	Radius under load mm	Load capacity kg/lbs				IP		OTD mm
								Single	Dual	kPa	psi	kPa	psi	
215/75R17.5 125/122M	14	6.00	6.75	211	767	359	1650	3640	1500	3305	760	110	14.0	
215/75R17.5 127/124M	16	6.00	6.75	211	767	359	1750	3860	1600	3530	830	120	14.0	
215/75R17.5 135/133L	16	6.00	6.75	211	767	359	2180	4805	2060	4540	860	125	14.0	
235/75R17.5 132/129M	16	6.75	7.50	233	797	372	2000	4410	1850	4080	830	120	14.0	
235/75R17.5 141/140J	16	6.75	7.50	233	797	372	2575	5675	2500	5510	850	123	14.0	
245/70R19.5 133/131M	14	7.50	6.75	248	839	391	2060	4540	1950	4300	760	110	14.5	
245/70R19.5 135/133L	16	7.50	6.75	248	839	391	2180	4805	2060	4540	830	120	14.5	
245/70R19.5 136/134M	16	7.50	6.75	248	839	391	2240	4940	2120	4675	830	120	14.5	
245/70R19.5 141/140J	18	7.50	6.75	248	839	391	2575	5675	2500	5510	850	125	14.5	

Size	LI/SS	PR	Rim size	Rim allowance	Inflated Section width mm	Overall diameter mm	Radius under load mm	Load capacity kg/lbs				IP		OTD mm
								Single	Dual	kPa	psi	kPa	psi	
11R22.5	148/145L	16	8.25	7.50	279	1054	491	3000	6610	2725	6005	830	120	22.0
11R22.5	149/146J	18	8.25	7.50	279	1054	491	3250	7160	3000	6610	930	135	22.0
12R22.5	152/148L	16	9.00	8.25	300	1085	504	3550	7825	3150	6945	900	130	22.5
12R22.5	150/147L	16	9.00	8.25	300	1085	504	3350	7390	3075	6780	830	120	22.5
12R22.5	152/149K	18	9.00	8.25	300	1085	504	3550	7830	3250	7160	930	135	22.5
275/70R22.5	152/148J	18	8.25	9.00	276	958	446	3550	7830	3150	6940	930	135	22.0



TRD98 ❄️

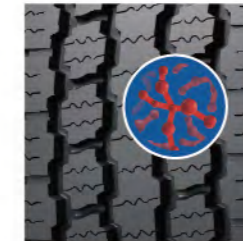
Excellent handling and mileage



Control



Safety



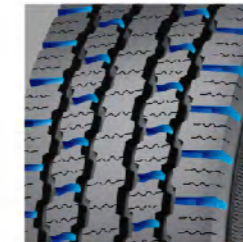
Special winter compound

- Improved grip and control in winter
- For safety driving



Block ribs with open shoulder and sipes

- Creates traction and grip on road
- Good control for safe driving



Connection bars between blocks

- Creates block stiffness
- Strong grip for safe driving

WINTER BUS

ALL POSITION



TRD98

Size	LI/SS	PR	Rim size	Rim allowance	Inflated Section width mm	Overall diameter mm	Radius under load mm	Load capacity kg/lbs				IP		OTD mm
								Single		Dual		kPa	psi	
215/75R17.5	127/124K	16	6.00	6.75	211	767	359	1750	3860	1600	3530	830	120	14.0
275/70R22.5	148/145J	16	8.25	9.00	276	958	446	3150	6940	2900	6395	860	125	19.0