

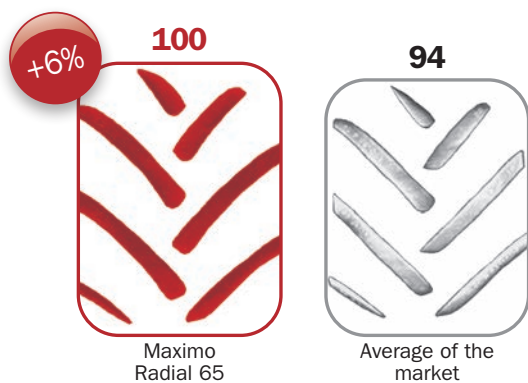
MAXIMO

Radial 65 Radial 70 Radial 85



Maximo Radial 65

The new Radial 65 range is designed for tractors up to 180 hp. It provides excellent performance, both in the field and on the road. The tread pattern design guarantees gentle ground handling and high traction capability. With its large footprint area and optimal pressure distribution, the tire prevents soil compaction, leading to higher field productivity.



On the road, the Radial 65 ensures easy handling and great comfort, even at high speed. Lower rolling resistance reduces fuel consumption, while the lug shape maximizes wear resistance, delivering long-lasting tires.

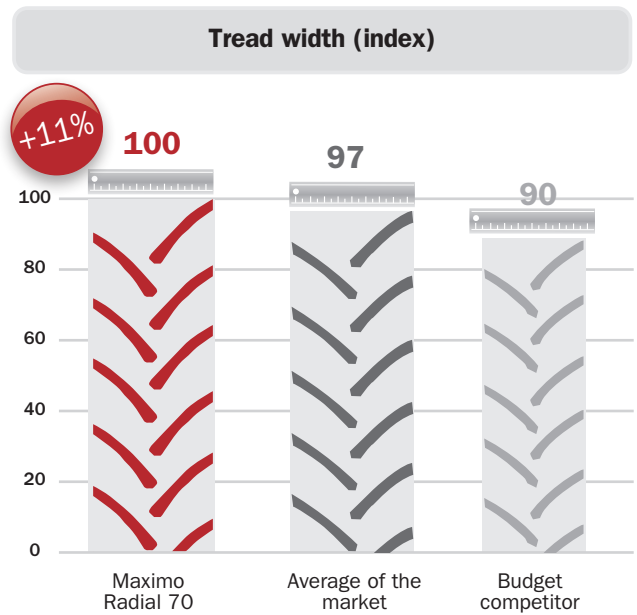


Maximo Radial 70

The Radial 70 range boasts a larger tread width compared to the equivalent products available in the marketplace. This is achievable through an advanced mould design, as well as through the perfect balance between the structure and flexibility of the tires.

The wide and long footprint results in excellent flotation properties, boosting yields and reducing crop stress.

The large footprint area minimizes the soil compaction and ensures outstanding traction.



MAXIMO Radial 70 guarantees high comfort levels for the driver due to the flexible sidewall.

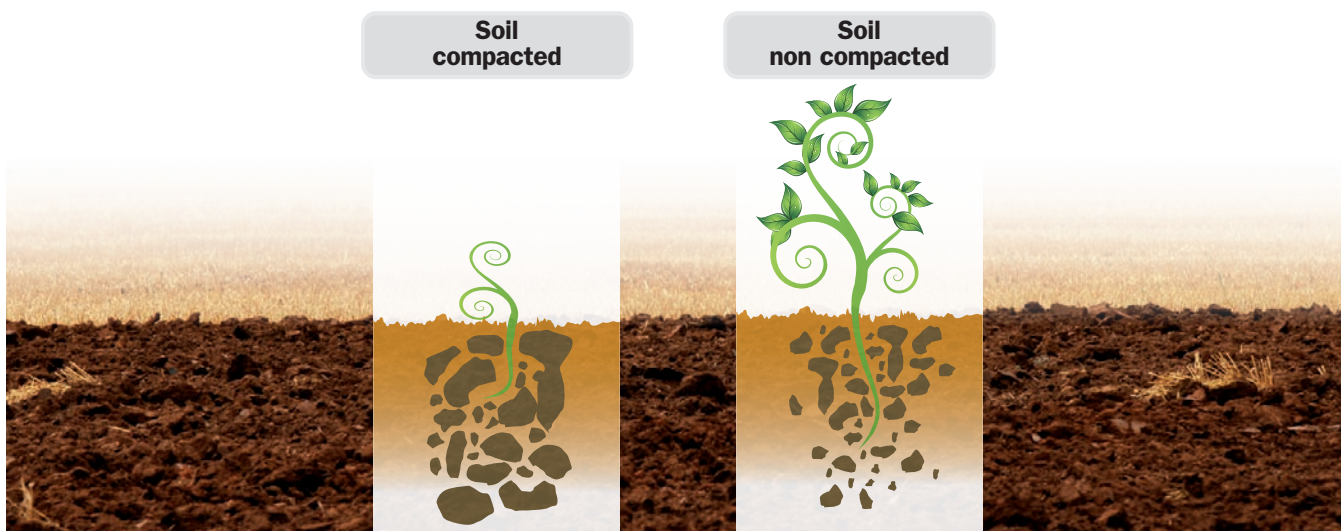
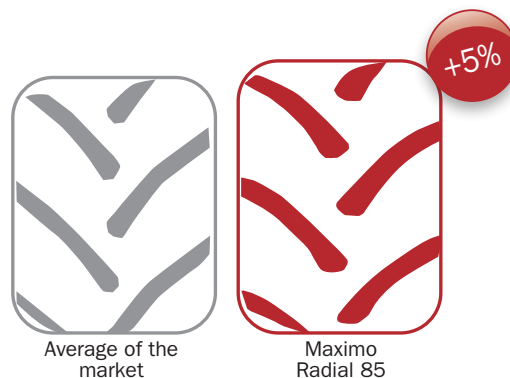
The longer service life of Radial 70, the great traction, as well as the good handling on the road makes the new range the right choice for reduced working time and high cost efficiency.



Maximo Radial 85

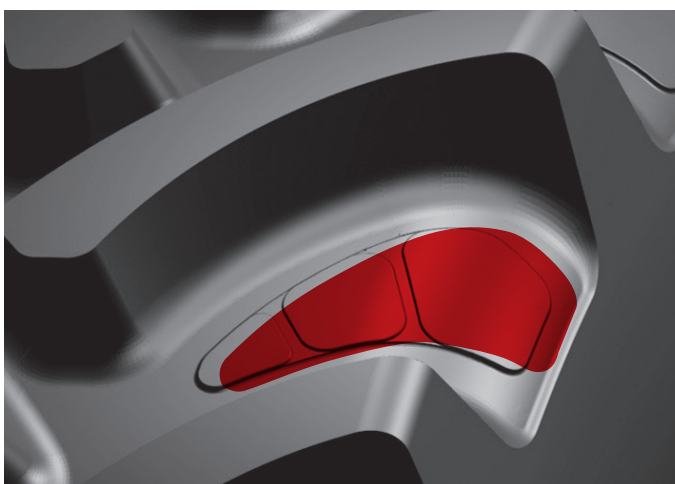
The Radial 85 is the ideal multipurpose tire for medium and powered tractors both for field and road application.

The combination of radial technology and tread design provides the **MAXIMO** range with a longer footprint area than the average of the market (+ 5%), for minimum soil compaction and excellent farm productivity.



The unique shape and angle of the lugs of the **MAXIMO** Radial 85 range, guarantee traction capacity and low slippage, generating outstanding power transmission to the ground.

The special inter-lug “islands” improve the self-cleaning of the tire, minimizing the distance required to release mud from the tread, thereby helping with adherence to road regulations.



The tread geometry and the materials used optimize tractor handling and increase wear resistance on road applications. This gives you important economic benefits and environmental respect. The complete Radial 85 range uses environmentally-friendly extender oils only.

Technical data

	Size	Tread Pattern	SW mm	OD mm	SLR mm	RC mm	SRI	Rim	Permitted Rim	Type	Tube
	440/65R24 128D	Radial 65	435	1185	535	3530		DW14L	W13 - W14L W15L (°) DW13 DW15L (°)	TUBELESS	14.9-24 TR218
Pressure	psi	9	12	14	17	20	23	26	28	30	
	bar	0,6	0,8	1,0	1,2	1,4	1,6	1,8	1,9	2,1	
Max. Load (kg)	65 S	1045	1210	1370	1515	1660	1800				
	50 S	1100	1270	1440	1590	1740	1890				
	40 S	1145	1325	1500	1660	1815	1975				
	30 S	1205	1390	1575	1740	1905	2070				
	10 LT S	1420	1645	1865	2060	2255	2450	2620	2700	3060	
	10 HT S	1205	1390	1575	1740	1905	2070				

	Size	Tread Pattern	SW mm	OD mm	SLR mm	RC mm	SRI	Rim	Permitted Rim	Type	Tube
	480/65R24 133D	Radial 65	480	1235	560	3695	600	DW15L	W14L - W15L W16L (°) DW14L - DW15L DW16L (°)	TUBELESS	16.9-24 TR218
Pressure	psi	9	12	14	17	20	23	26	28	30	
	bar	0,6	0,8	1,0	1,2	1,4	1,6	1,8	1,9	2,1	
Max. Load (kg)	65 S	1195	1385	1570	1735	1900	2060				
	50 S	1255	1450	1645	1820	1990	2165				
	40 S	1310	1515	1715	1895	2080	2260				
	30 S	1375	1590	1805	1990	2180	2370				
	10 LT S	1625	1880	2130	2355	2580	2805	2995	3090	3505	
	10 HT S	1375	1590	1805	1990	2180	2370				

	Size	Tread Pattern	SW mm	OD mm	SLR mm	RC mm	SRI	Rim	Permitted Rim	Type	Tube
	540/65R24 140D	Radial 65	530	1315	600	3915	625	DW16L	W16L W15L (°) W18L DW15L (°)	TUBELESS	16.9-28 TR218
Pressure	psi	9	12	14	17	20	23	26	28	30	
	bar	0,6	0,8	1,0	1,2	1,4	1,6	1,8	1,9	2,1	
Max. Load (kg)	65 S	1450	1675	1900	2100	2300	2500				
	50 S	1525	1760	1995	2205	2415	2625				
	40 S	1590	1835	2085	2300	2520	2740				
	30 S	1670	1930	2185	2415	2645	2875				
	10 LT S	1975	2280	2585	2860	3130	3400	3635	3750	4250	
	10 HT S	1670	1930	2185	2415	2645	2875				

	Size	Tread Pattern	SW mm	OD mm	SLR mm	RC mm	SRI	Rim	Permitted Rim	Type	Tube
	440/65R28 131D	Radial 65	435	1295	585	3870		W14L	W13L	TUBELESS	16.9-28 TR218
Pressure	psi	9	12	14	17	20	23	26	28	30	
	bar	0,6	0,8	1,0	1,2	1,4	1,6	1,8	1,9	2,1	
Max. Load (kg)	65 S	1135	1310	1485	1640	1795	1950				
	50 S	1190	1375	1560	1720	1885	2050				
	40 S	1240	1435	1625	1795	1965	2140				
	30 S	1305	1505	1705	1885	2065	2245				
	10 LT S	1540	1780	2020	2230	2440	2655	2835	2925	3315	
	10 HT S	1305	1505	1705	1885	2065	2245				

(°) = For these rims please contact the Trelleborg expert in your area

	Size	Tread Pattern	SW mm	OD mm	SLR mm	RC mm	SRI	Rim	Permitted Rim	Type	Tube
	480/65R28 136D	Radial 65	480	1345	605	4010	650	DW15L	W14L - W15L W16L (°) DW14L DW16L (°)	TUBELESS	16.9-28 TR218
Pressure	psi	9	12	14	17	20	23	26	28	30	
	bar	0,6	0,8	1,0	1,2	1,4	1,6	1,8	1,9	2,1	
Max. Load (kg)	65 S	1300	1505	1705	1885	2065	2240				
	50 S	1365	1580	1790	1980	2165	2355				
	40 S	1425	1645	1865	2065	2260	2455				
	30 S	1495	1730	1960	2165	2370	2580				
	10 LT S	1770	2045	2320	2560	2805	3050	3260	3360	3810	
	10 HT S	1495	1730	1960	2165	2370	2580				

	Size	Tread Pattern	SW mm	OD mm	SLR mm	RC mm	SRI	Rim	Permitted Rim	Type	Tube
	540/65R28 142D	Radial 65	525	1413	637	4250	675	DW16L	W15L (°) W16L - W18L DW15L (°) DW18L	TUBELESS	16.9-28 TR218
Pressure	psi	9	12	14	17	20	23	26	28	30	
	bar	0,6	0,8	1,0	1,2	1,4	1,6	1,8	1,9	2,1	
Max. Load (kg)	65 S	1540	1780	2015	2230	2440	2650				
	50 S	1615	1865	2115	2340	2560	2785				
	40 S	1685	1945	2210	2440	2670	2905				
	30 S	1770	2045	2320	2560	2805	3050				
	10 LT S	2095	2415	2740	3030	3320	3605	3855	3975	4505	
	10 HT S	1770	2045	2320	2560	2805	3050				

	Size	Tread Pattern	SW mm	OD mm	SLR mm	RC mm	SRI	Rim	Permitted Rim	Type	Tube
	540/65R30 143D	Radial 65	530	1470	670	4380	700	DW16L	W15L (°) W16L - W18L DW15L (°) DW18L	TUBELESS	18.4-38 TR218
Pressure	psi	9	12	14	17	20	23	26	28	30	
	bar	0,6	0,8	1,0	1,2	1,4	1,6	1,8	1,9	2,1	
Max. Load (kg)	65 S	1585	1830	2075	2290	2510	2725				
	50 S	1660	1920	2175	2405	2635	2865				
	40 S	1735	2000	2270	2510	2750	2985				
	30 S	1820	2100	2385	2635	2885	3135				
	10 LT S	2150	2485	2820	3115	3410	3710	3965	4090	4635	
	10 HT S	1820	2100	2385	2635	2885	3135				

	Size	Tread Pattern	SW mm	OD mm	SLR mm	RC mm	SRI	Rim	Permitted Rim	Type	Tube
	540/65R34 145D	Radial 65	520	1580	710	4710	750	DW16L	W15L (°) W16L - W18L DW15L (°) DW18L	TUBELESS	16.9-34 TR218
Pressure	psi	9	12	14	17	20	23	26	28	30	
	bar	0,6	0,8	1,0	1,2	1,4	1,6	1,8	1,9	2,1	
Max. Load (kg)	65 S	1685	1945	2205	2440	2670	2900				
	50 S	1770	2045	2315	2560	2805	3045				
	40 S	1845	2130	2415	2670	2925	3180				
	30 S	1935	2235	2535	2805	3070	3335				
	10 LT S	2290	2645	3000	3315	3630	3945	4220	4350	4930	
	10 HT S	1935	2235	2535	2805	3070	3335				

	Size	Tread Pattern	SW mm	OD mm	SLR mm	RC mm	SRI	Rim	Permitted Rim	Type	Tube
	600/65R34 151D	Radial 65	610	1650	750	4935	775	DW20B	DW18L W18L	TUBELESS	
Pressure	psi	9	12	14	17	20	23	26	28	30	
	bar	0,6	0,8	1,0	1,2	1,4	1,6	1,8	1,9	2,1	
Max. Load (kg)	65 S	2005	2315	2625	2900	3175	3450				
	50 S	2105	2430	2755	3045	3335	3625				
	40 S	2195	2535	2875	3175	3480	3780				
	30 S	2305	2660	3020	3335	3655	3970				
	10 LT S	2725	3145	3570	3945	4320	4695	5020	5175	5865	
	10 HT S	2305	2660	3020	3335	3655	3970				

	Size	Tread Pattern	SW mm	OD mm	SLR mm	RC mm	SRI	Rim	Permitted Rim	Type	Tube
Pressure	540/65R38 147D	Radial 65	530	1680	760	5010	800	DW16L	W15L (°) W16L - W18L DW15L (°) DW18L	TUBELESS	18.4-38 TR218
	psi	9	12	14	17	20	23	26	28	30	
	bar	0,6	0,8	1,0	1,2	1,4	1,6	1,8	1,9	2,1	
Max. Load (kg)	65 S	1790	2065	2345	2590	2835	3080				
	50 S	1880	2170	2460	2720	2980	3235				
	40 S	1960	2260	2565	2835	3105	3375				
	30 S	2055	2375	2695	2980	3260	3545				
	10 LT S	2430	2810	3185	3520	3855	4190	4480	4620	5240	
	10 HT S	2055	2375	2695	2980	3260	3545				

	Size	Tread Pattern	SW mm	OD mm	SLR mm	RC mm	SRI	Rim	Permitted Rim	Type	Tube
Pressure	600/65R38 153D	Radial 65	590	1770	800	5285	825	DW18L	W18L DW20B	TUBELESS	20.8-38 TR218
	psi	9	12	14	17	20	23	26	28	30	
	bar	0,6	0,8	1,0	1,2	1,4	1,6	1,8	1,9	2,1	
Max. Load (kg)	65 S	2125	2455	2785	3075	3370	3660				
	50 S	2230	2575	2925	3230	3540	3845				
	40 S	2325	2690	3050	3370	3690	4010				
	30 S	2445	2825	3200	3540	3875	4210				
	10 LT S	2890	3335	3785	4185	4580	4980	5325	5490	6225	
	10 HT S	2445	2825	3200	3540	3875	4210				

	Size	Tread Pattern	SW mm	OD mm	SLR mm	RC mm	SRI	Rim	Permitted Rim	Type	Tube
Pressure	650/65R38 157D	Radial 65	650	1825	815	5410	875	DW20B	W18L (°) DW18L (°)	TUBELESS	20.8-38 TR218
	psi	9	12	14	17	20	23	26	28	30	
	bar	0,6	0,8	1,0	1,2	1,4	1,6	1,8	1,9	2,1	
Max. Load (kg)	65 S	2395	2765	3135	3465	3795	4125				
	50 S	2515	2905	3295	3640	3985	4335				
	40 S	2620	3030	3435	3795	4160	4520				
	30 S	2755	3180	3610	3985	4365	4745				
	10 LT S	3255	3760	4265	4715	5165	5610	6000	6190	7015	
	10 HT S	2755	3180	3610	3985	4365	4745				

	Size	Tread Pattern	SW mm	OD mm	SLR mm	RC mm	SRI	Rim	Permitted Rim	Type	Tube
Pressure	650/65R38 166D	Radial 65	650	1820	825	5525	875	DW20B		TUBELESS	
	psi	12	15	17	20	23	29	35	41	46	49
	bar	0,8	1,0	1,2	1,4	1,6	2	2,4	2,8	3,2	3,4
Max. Load (kg)	65 S	2650	3025	3395	3765	4135	4560	4825	5300		
	50 S	2785	3180	3565	3955	4345	4790	5070	5565		
	40 S	2905	3315	3720	4125	4530	4995	5285	5805		
	30 S	3050	3480	3905	4330	4760	5245	5550	6095		
	10 LT S	3285	3745	4330	4915	5475	6385	6785	7455	7635	7950
	10 HT S	3050	3480	3905	4330	4760	5245	5550	6095		

	Size	Tread Pattern	SW mm	OD mm	SLR mm	RC mm	SRI	Rim	Permitted Rim	Type	Tube
Pressure	650/65R42 158D	Radial 65	650	1920	870	5730	925	DW20B	DW18L	TUBELESS	20.8-42 TR218
	psi	9	12	14	17	20	23	26	28	30	
	bar	0,6	0,8	1,0	1,2	1,4	1,6	1,8	1,9	2,1	
Max. Load (kg)	65 S	2465	2850	3230	3570	3910	4250				
	50 S	2590	2990	3395	3750	4110	4465				
	40 S	2700	3120	3540	3910	4285	4655				
	30 S	2835	3275	3715	4110	4500	4890				
	10 LT S	3355	3875	4395	4860	5320	5780	6180	6375	7225	
	10 HT S	2835	3275	3715	4110	4500	4890				

(°) = For these rims please contact the Trelleborg expert in your area

	Size	Tread Pattern	SW mm	OD mm	SLR mm	RC mm	SRI	Rim	Permitted Rim	Type	Tube
	360/70R24 122A8 122B	Radial 70	352	1152	518	3455	550	W11	W10 - W12 DW10 - DW11 DW12	TUBELESS	13.6-24 TR218
Pressure	psi	6	9	12	14	17	20	23	26	28	30
	bar	0,4	0,6	0,8	1,0	1,2	1,4	1,6	1,8	1,9	2,1
Max. Load (kg)	50 S		825	960	1095	1230	1365	1500			
	40 S		825	960	1095	1230	1365	1500			
	30 S		885	1025	1170	1315	1460	1605			
	10 LT S	920	1120	1305	1490	1675	1855	2040	2185	2245	2550
	10 HT S		885	1025	1170	1315	1460	1605			

	Size	Tread Pattern	SW mm	OD mm	SLR mm	RC mm	SRI	Rim	Permitted Rim	Type	Tube
	380/70R24 125A8 125B	Radial 70	384	1194	535	3580	575	W12	W11 - W13 DW11 - DW12 DW13	TUBELESS	14.9-24 TR218
Pressure	psi	6	9	12	14	17	20	23	26	28	30
	bar	0,4	0,6	0,8	1,0	1,2	1,4	1,6	1,8	1,9	2,1
Max. Load (kg)	50 S		910	1055	1205	1355	1500	1650			
	40 S		910	1055	1205	1355	1500	1650			
	30 S		970	1130	1290	1450	1605	1765			
	10 LT S	1010	1235	1435	1640	1840	2040	2245	2400	2470	2805
	10 HT S		970	1130	1290	1450	1605	1765			

	Size	Tread Pattern	SW mm	OD mm	SLR mm	RC mm	SRI	Rim	Permitted Rim	Type	Tube
	420/70R24 130A8 130B	Radial 70	422	1256	562	3765	600	W13	W12 - W14L DW12 - DW13 DW14L	TUBELESS	16.9-24 TR218
Pressure	psi	6	9	12	14	17	20	23	26	28	30
	bar	0,4	0,6	0,8	1,0	1,2	1,4	1,6	1,8	1,9	2,1
Max. Load (kg)	50 S		1045	1215	1385	1560	1730	1900			
	40 S		1045	1215	1385	1560	1730	1900			
	30 S		1120	1300	1485	1665	1850	2035			
	10 LT S	1165	1420	1655	1885	2120	2350	2585	2765	2840	3230
	10 HT S		1120	1300	1485	1665	1850	2035			

	Size	Tread Pattern	SW mm	OD mm	SLR mm	RC mm	SRI	Rim	Permitted Rim	Type	Tube
	480/70R24 138A8 138B	Radial 70	468	1318	590	3950	625	W15L	W14L - W16L DW14L DW15L DW16L	TUBELESS	16.9-24 TR218
Pressure	psi	6	9	12	14	17	20	23	26	28	30
	bar	0,4	0,6	0,8	1,0	1,2	1,4	1,6	1,8	1,9	2,1
Max. Load (kg)	50 S		1300	1510	1725	1935	2150	2360			
	40 S		1300	1510	1725	1935	2150	2360			
	30 S		1390	1615	1845	2070	2300	2525			
	10 LT S	1445	1765	2055	2345	2630	2920	3210	3435	3530	4010
	10 HT S		1390	1615	1845	2070	2300	2525			

	Size	Tread Pattern	SW mm	OD mm	SLR mm	RC mm	SRI	Rim	Permitted Rim	Type	Tube
	380/70R28 127A8 127B	Radial 70	375	1295	585	3890	625	W12	W11 - W13 DW11 - DW12 DW13	TUBELESS	12.4-28 TR218
Pressure	psi	6	9	12	14	17	20	23	26	28	30
	bar	0,4	0,6	0,8	1,0	1,2	1,4	1,6	1,8	1,9	2,1
Max. Load (kg)	50 S		965	1120	1280	1435	1595	1750			
	40 S		965	1120	1280	1435	1595	1750			
	30 S		1030	1200	1365	1535	1705	1875			
	10 LT S	1070	1310	1525	1735	1950	2165	2380	2545	2620	2975
	10 HT S		1030	1200	1365	1535	1705	1875			

	Size	Tread Pattern	SW mm	OD mm	SLR mm	RC mm	SRI	Rim	Permitted Rim	Type	Tube
	420/70R28 133A8 133B	Radial 70	423	1354	605	4060	650	W13	W12 - W14L DW12 - DW13 DW14L	TUBELESS	16.9-28 TR218
Pressure	psi	6	9	12	14	17	20	23	26	28	30
	bar	0,4	0,6	0,8	1,0	1,2	1,4	1,6	1,8	1,9	2,1
Max. Load (kg)	50 S		1135	1320	1505	1690	1875	2060			
	40 S		1135	1320	1505	1690	1875	2060			
	30 S		1210	1410	1610	1805	2005	2205			
	10 LT S	1260	1540	1795	2045	2295	2550	2800	3000	3080	3500
	10 HT S		1210	1410	1610	1805	2005	2205			

	Size	Tread Pattern	SW mm	OD mm	SLR mm	RC mm	SRI	Rim	Permitted Rim	Type	Tube
	480/70R28 140A8 140B	Radial 70	478	1423	636	4270	675	W15L	W14L - W16L DW14L DW15L DW16L	TUBELESS	16.9-28 TR218
Pressure	psi	6	9	12	14	17	20	23	26	28	30
	bar	0,4	0,6	0,8	1,0	1,2	1,4	1,6	1,8	1,9	2,1
Max. Load (kg)	50 S		1375	1600	1825	2050	2275	2500			
	40 S		1375	1600	1825	2050	2275	2500			
	30 S		1470	1710	1955	2195	2435	2675			
	10 LT S	1530	1870	2175	2480	2790	3095	3400	3640	3740	4250
	10 HT S		1470	1710	1955	2195	2435	2675			

	Size	Tread Pattern	SW mm	OD mm	SLR mm	RC mm	SRI	Rim	Permitted Rim	Type	Tube
	480/70R30 141A8 141B	Radial 70	472	1478	662	4435	700	W15L	W14L - W16L DW14L DW15L DW16L	TUBELESS	18.4-30 TR218
Pressure	psi	6	9	12	14	17	20	23	26	28	30
	bar	0,4	0,6	0,8	1,0	1,2	1,4	1,6	1,8	1,9	2,1
Max. Load (kg)	50 S		1415	1650	1880	2110	2345	2575			
	40 S		1415	1650	1880	2110	2345	2575			
	30 S		1515	1765	2010	2260	2505	2755			
	10 LT S	1575	1925	2240	2555	2870	3185	3500	3745	3850	4380
	10 HT S		1515	1765	2010	2260	2505	2755			

	Size	Tread Pattern	SW mm	OD mm	SLR mm	RC mm	SRI	Rim	Permitted Rim	Type	Tube
	480/70R34 143A8 143B	Radial 70	480	1580	705	4740	750	W15L	W14L - W16L DW14L DW15L - DW16L	TUBELESS	16.9-34 TR218
Pressure	psi	6	9	12	14	17	20	23	26	28	30
	bar	0,4	0,6	0,8	1,0	1,2	1,4	1,6	1,8	1,9	2,1
Max. Load (kg)	50 S		1500	1745	1990	2235	2480	2725			
	40 S		1500	1745	1990	2235	2480	2725			
	30 S		1605	1865	2130	2390	2655	2915			
	10 LT S	1670	2040	2370	2705	3040	3370	3705	3965	4075	4635
	10 HT S		1605	1865	2130	2390	2655	2915			

	Size	Tread Pattern	SW mm	OD mm	SLR mm	RC mm	SRI	Rim	Permitted Rim	Type	Tube
	520/70R34 148A8 148B	Radial 70	516	1640	730	4920	775	W16L	W15L - W18L DW15L - DW16L	TUBELESS	16.9-34 TR218
Pressure	psi	6	9	12	14	17	20	23	26	28	30
	bar	0,4	0,6	0,8	1,0	1,2	1,4	1,6	1,8	1,9	2,1
Max. Load (kg)	50 S		1735	2015	2300	2585	2865	3150			
	40 S		1735	2015	2300	2585	2865	3150			
	30 S		1855	2155	2460	2765	3065	3370			
	10 LT S	1930	2355	2740	3125	3515	3900	4285	4585	4710	5355
	10 HT S		1855	2155	2460	2765	3065	3370			

	Size	Tread Pattern	SW mm	OD mm	SLR mm	RC mm	SRI	Rim	Permitted Rim	Type	Tube
	480/70R38 145A8 145B	Radial 70	474	1680	750	5045	800	W15L	W14L - W16L DW14L - DW15L DW16L	TUBELESS	18.4-38 TR218
Pressure	psi	6	9	12	14	17	20	23	26	28	30
	bar	0,4	0,6	0,8	1,0	1,2	1,4	1,6	1,8	1,9	2,1
Max. Load (kg)	50 S		1595	1855	2115	2380	2640	2900			
	40 S		1595	1855	2115	2380	2640	2900			
	30 S		1705	1985	2265	2545	2825	3105			
	10 LT S	1775	2170	2525	2880	3235	3590	3945	4220	4340	4930
	10 HT S		1705	1985	2265	2545	2825	3105			

	Size	Tread Pattern	SW mm	OD mm	SLR mm	RC mm	SRI	Rim	Permitted Rim	Type	Tube
	520/70R38 150A8 150B	Radial 70	530	1755	781	5280	825	W16	W15L - W18L DW15L - DW16L DW18L	TUBELESS	18.4-38 TR218
Pressure	psi	6	9	12	14	17	20	23	26	28	30
	bar	0,4	0,6	0,8	1,0	1,2	1,4	1,6	1,8	1,9	2,1
Max. Load (kg)	50 S		1845	2145	2445	2745	3050	3350			
	40 S		1845	2145	2445	2745	3050	3350			
	30 S		1970	2295	2615	2940	3260	3585			
	10 LT S	2050	2505	2915	3325	3735	4145	4555	4875	5010	5695
	10 HT S		1970	2295	2615	2940	3260	3585			

	Size	Tread Pattern	SW mm	OD mm	SLR mm	RC mm	SRI	Rim	Permitted Rim	Type	Tube
	580/70R38 155A8 155B	Radial 70	584	1840	820	5525	875	W18L	DW18L	TUBELESS	20.8-38 TR218
Pressure	psi	6	9	12	14	17	20	23	26	28	30
	bar	0,4	0,6	0,8	1,0	1,2	1,4	1,6	1,8	1,9	2,1
Max. Load (kg)	50 S		2130	2480	2830	3180	3525	3875			
	40 S		2130	2480	2830	3180	3525	3875			
	30 S		2280	2655	3025	3400	3775	4145			
	10 LT S	2370	2900	3375	3845	4320	4795	5270	5640	5795	6585
	10 HT S		2280	2655	3025	3400	3775	4145			

	Size	Tread Pattern	SW mm	OD mm	SLR mm	RC mm	SRI	Rim	Permitted Rim	Type	Tube
	620/70R42 166D	Radial 70	620	1940	865	5820	925	DW20B	DW18L W18L	TUBELESS	
Pressure	psi	9	12	15	17	20	23	29	35	41	42
	bar	0,6	0,8	1,0	1,2	1,4	1,6	2,0	2,4	2,8	2,9
Max. Load (kg)	65 S	2495	2865	3290	3710	4135	4560	4985	5300		
	50 S	2620	3010	3455	3900	4345	4790	5235	5565		
	40 S	2730	3135	3600	4065	4530	4995	5460	5805		
	30 S	2865	3295	3780	4270	4755	5245	5730	6095		
	10 LT S	3390	3895	4470	5050	5625	6200	6780	7210	7715	7950
	10 HT S	2865	3295	3780	4270	4755	5245	5730	6095		

	Size	Tread Pattern	SW mm	OD mm	SLR mm	RC mm	SRI	Rim	Permitted Rim	Type	Tube
	280/85R24 115A8 112B (11.2R24)	Radial 85	290	1090	490	3260	525	W10	W9 - W8 DW10	TUBELESS	11.2-24 TR218
Pressure	psi	6	9	12	15	17	20	23	26	28	30
	bar	0,4	0,6	0,8	1,0	1,2	1,4	1,6	1,8	1,9	2,1
Max. Load (kg)	50 S		740	815	890	965	1035	1120			
	40 S		810	895	975	1055	1135	1215			
	30 S		870	960	1045	1130	1215	1305			
	10 LT S	980	1095	1210	1325	1440	1550	1660	1770	1825	2070
	10 HT S		870	960	1045	1130	1215	1305			

	Size	Tread Pattern	SW mm	OD mm	SLR mm	RC mm	SRI	Rim	Permitted Rim	Type	Tube
	320/85R24 122A8 119B (12.4R24)	Radial 85	320	1145	510	3420	550	W11	W10 - W9 DW10 DW11	TUBELESS	12.4-24 TR218
Pressure	psi	6	9	12	15	17	20	23	26	28	30
	bar	0,4	0,6	0,8	1,0	1,2	1,4	1,6	1,8	1,9	2,1
Max. Load (kg)	50 S		910	1005	1095	1185	1275	1360			
	40 S		1000	1100	1200	1300	1400	1500			
	30 S		1070	1180	1285	1395	1500	1605			
	10 LT S	1200	1340	1480	1620	1760	1900	2040	2180	2250	2550
	10 HT S		1070	1180	1285	1395	1500	1605			

	Size	Tread Pattern	SW mm	OD mm	SLR mm	RC mm	SRI	Rim	Permitted Rim	Type	Tube										
Pressure	340/85R24 125A8 122B (13.6R24)	Radial 85	355	1180	530	3525	575	W12	W11 - DW11 DW12	TUBELESS	13.6-24 TR218										
	psi											6	9	12	15	17	20	23	26	28	30
	bar											0,4	0,6	0,8	1,0	1,2	1,4	1,6	1,8	1,9	2,1
Max. Load (kg)	50 S		1000	1105	1205	1305	1405	1500													
	40 S		1095	1210	1320	1430	1540	1650													
	30 S		1175	1295	1415	1535	1650	1770													
	10 LT S	1320	1475	1630	1785	1940	2095	2250	2400	2475	2805										
	10 HT S		1175	1295	1415	1535	1650	1770													

	Size	Tread Pattern	SW mm	OD mm	SLR mm	RC mm	SRI	Rim	Permitted Rim	Type	Tube										
Pressure	380/85R24 131A8 128B (14.9R24)	Radial 85	390	1245	555	3720	600	W12	W13 - W11 DW12 - DW13 DW11	TUBELESS	14.9-24 TR218										
	psi											6	9	12	15	17	20	23	26	28	30
	bar											0,4	0,6	0,8	1,0	1,2	1,4	1,6	1,8	1,9	2,1
Max. Load (kg)	50 S		1170	1295	1420	1540	1660	1800													
	40 S		1285	1420	1555	1690	1820	1950													
	30 S		1375	1520	1665	1810	1950	2090													
	10 LT S	1575	1755	1935	2115	2295	2475	2655	2835	2925	3315										
	10 HT S		1375	1520	1665	1810	1950	2090													

	Size	Tread Pattern	SW mm	OD mm	SLR mm	RC mm	SRI	Rim	Permitted Rim	Type	Tube										
Pressure	420/85R24 137A8 134B (16.9R24)	Radial 85	445	1310	585	3925	625	W15L	W14L DW14L DW15L	TUBELESS	16.9-24 TR218										
	psi											6	9	12	15	17	20	23	26	28	30
	bar											0,4	0,6	0,8	1,0	1,2	1,4	1,6	1,8	1,9	2,1
Max. Load (kg)	50 S		1385	1530	1670	1815	1955	2120													
	40 S		1520	1680	1835	1990	2145	2300													
	30 S		1630	1800	1965	2130	2300	2465													
	10 LT S	1840	2055	2270	2485	2700	2915	3130	3345	3450	3910										
	10 HT S		1630	1800	1965	2130	2300	2465													

	Size	Tread Pattern	SW mm	OD mm	SLR mm	RC mm	SRI	Rim	Permitted Rim	Type	Tube										
Pressure	320/85R28 124A8 121B (12.4R28)	Radial 85	325	1240	555	3715	600	W11	W10 - W9 DW10 DW11	TUBELESS	12.4-28 TR218										
	psi											6	9	12	15	17	20	23	26	28	30
	bar											0,4	0,6	0,8	1,0	1,2	1,4	1,6	1,8	1,9	2,1
Max. Load (kg)	50 S		960	1060	1160	1260	1360	1450													
	40 S		1050	1160	1270	1380	1490	1600													
	30 S		1125	1245	1360	1480	1595	1715													
	10 LT S	1275	1425	1575	1725	1875	2025	2175	2325	2400	2720										
	10 HT S		1125	1245	1360	1480	1595	1715													

	Size	Tread Pattern	SW mm	OD mm	SLR mm	RC mm	SRI	Rim	Permitted Rim	Type	Tube
	340/85R28 127A8 124B (13.6R28)	Radial 85	360	1280	575	3815	625	W12	W11 - DW11 DW12	TUBELESS	13.6-28 TR218
Pressure	psi	6	9	12	15	17	20	23	26	28	30
	bar	0,4	0,6	0,8	1,0	1,2	1,4	1,6	1,8	1,9	2,1
Max. Load (kg)	50 S		1050	1160	1265	1375	1485	1600			
	40 S		1150	1270	1390	1510	1630	1750			
	30 S		1235	1360	1490	1620	1745	1875			
	10 LT S	1405	1570	1735	1900	2065	2225	2385	2545	2625	2975
	10 HT S		1235	1360	1490	1620	1745	1875			

	Size	Tread Pattern	SW mm	OD mm	SLR mm	RC mm	SRI	Rim	Permitted Rim	Type	Tube
	380/85R28 133A8 130B (14.9R28)	Radial 85	390	1345	600	4020	650	W13	W12 - W11 DW11 - DW12 DW13	TUBELESS	14.9-28 TR218
Pressure	psi	6	9	12	15	17	20	23	26	28	30
	bar	0,4	0,6	0,8	1,0	1,2	1,4	1,6	1,8	1,9	2,1
Max. Load (kg)	50 S		1240	1365	1495	1620	1750	1900			
	40 S		1360	1500	1640	1780	1920	2060			
	30 S		1460	1605	1755	1905	2055	2205			
	10 LT S	1660	1855	2045	2235	2425	2615	2805	2995	3090	3505
	10 HT S		1460	1605	1755	1905	2055	2205			

	Size	Tread Pattern	SW mm	OD mm	SLR mm	RC mm	SRI	Rim	Permitted Rim	Type	Tube
	420/85R28 139A8 136B (16.9R28)	Radial 85	445	1405	625	4200	675	W15L	W14L DW14L DW15L	TUBELESS	16.9-28 TR218
Pressure	psi	6	9	12	15	17	20	23	26	28	30
	bar	0,4	0,6	0,8	1,0	1,2	1,4	1,6	1,8	1,9	2,1
Max. Load (kg)	50 S		1465	1615	1765	1915	2065	2240			
	40 S		1605	1770	1935	2100	2265	2430			
	30 S		1720	1895	2075	2250	2425	2605			
	10 LT S	1955	2185	2410	2635	2860	3085	3310	3535	3645	4135
	10 HT S		1720	1895	2075	2250	2425	2605			

	Size	Tread Pattern	SW mm	OD mm	SLR mm	RC mm	SRI	Rim	Permitted Rim	Type	Tube
	380/85R30 135A8 132B (14.9R30)	Radial 85	385	1400	625	4180	675	W13	W12 - W11 DW11 - DW12 DW13	TUBELESS	14.9-30 TR218
Pressure	psi	6	9	12	15	17	20	23	26	28	30
	bar	0,4	0,6	0,8	1,0	1,2	1,4	1,6	1,8	1,9	2,1
Max. Load (kg)	50 S		1305	1440	1575	1715	1850	2000			
	40 S		1430	1580	1730	1880	2030	2180			
	30 S		1535	1695	1855	2015	2175	2335			
	10 LT S	1745	1950	2155	2360	2565	2770	2970	3170	3270	3710
	10 HT S		1535	1695	1855	2015	2175	2335			

	Size	Tread Pattern	SW mm	OD mm	SLR mm	RC mm	SRI	Rim	Permitted Rim	Type	Tube										
Pressure	420/85R30 140A8 137B (16.9R30)	Radial 85	445	1475	655	4400	700	W15L	W14L DW14L DW15L	TUBELESS	16.9-30 TR218										
	psi											6	9	12	15	17	20	23	26	28	30
	bar											0,4	0,6	0,8	1,0	1,2	1,4	1,6	1,8	1,9	2,1
Max. Load (kg)	50 S		1505	1660	1815	1970	2125	2300													
	40 S		1650	1820	1990	2160	2330	2500													
	30 S		1770	1950	2130	2315	2495	2675													
	10 LT S	2000	2235	2470	2705	2940	3175	3405	3635	3750	4250										
	10 HT S		1770	1950	2130	2315	2495	2675													

	Size	Tread Pattern	SW mm	OD mm	SLR mm	RC mm	SRI	Rim	Permitted Rim	Type	Tube										
Pressure	460/85R30 145A8 142B (18.4R30)	Radial 85	485	1525	675	4580	725	W16L	W15L DW15L DW16L	TUBELESS	18.4-30 TR218										
	psi											6	9	12	15	17	20	23	26	28	30
	bar											0,4	0,6	0,8	1,0	1,2	1,4	1,6	1,8	1,9	2,1
Max. Load (kg)	50 S		1730	1915	2095	2275	2460	2650													
	40 S		1900	2100	2300	2500	2700	2900													
	30 S		2035	2250	2465	2675	2890	3105													
	10 LT S	2325	2595	2865	3135	3405	3675	3945	4215	4350	4930										
	10 HT S		2035	2250	2465	2675	2890	3105													

	Size	Tread Pattern	SW mm	OD mm	SLR mm	RC mm	SRI	Rim	Permitted Rim	Type	Tube										
Pressure	420/85R34 142A8 139B (16.9R34)	Radial 85	445	1575	705	4705	750	W15L	W14L DW14L DW15L	TUBELESS	16.9-34 TR218										
	psi											6	9	12	15	17	20	23	26	28	30
	bar											0,4	0,6	0,8	1,0	1,2	1,4	1,6	1,8	1,9	2,1
Max. Load (kg)	50 S		1595	1760	1925	2085	2250	2430													
	40 S		1750	1930	2110	2290	2470	2650													
	30 S		1875	2070	2260	2455	2645	2840													
	10 LT S	2125	2375	2625	2875	3120	3365	3610	3855	3975	4505										
	10 HT S		1875	2070	2260	2455	2645	2840													

	Size	Tread Pattern	SW mm	OD mm	SLR mm	RC mm	SRI	Rim	Permitted Rim	Type	Tube										
Pressure	460/85R34 147A8 144B (18.4R34)	Radial 85	485	1640	725	4915	775	W16L	W15L DW15L DW16L	TUBELESS	18.4-34 TR218										
	psi											6	9	12	15	17	20	23	26	28	30
	bar											0,4	0,6	0,8	1,0	1,2	1,4	1,6	1,8	1,9	2,1
Max. Load (kg)	50 S		1845	2035	2225	2420	2610	2800													
	40 S		2025	2235	2445	2655	2865	3075													
	30 S		2170	2395	2620	2845	3070	3295													
	10 LT S	2465	2755	3045	3335	3620	3905	4190	4475	4615	5230										
	10 HT S		2170	2395	2620	2845	3070	3295													

	Size	Tread Pattern	SW mm	OD mm	SLR mm	RC mm	SRI	Rim	Permitted Rim	Type	Tube										
Pressure	420/85R38 144A8 141B (16.9R38)	Radial 85	445	1675	745	5005	800	W15L	W14L DW14L DW15L	TUBELESS	16.9-38 TR218										
	psi											6	9	12	15	17	20	23	26	28	30
	bar											0,4	0,6	0,8	1,0	1,2	1,4	1,6	1,8	1,9	2,1
Max. Load (kg)	50 S		1685	1860	2030	2205	2380	2575													
	40 S		1850	2040	2230	2420	2610	2800													
	30 S		1980	2185	2390	2590	2795	3000													
	10 LT S	2250	2510	2770	3030	3290	3550	3810	4070	4200	4760										
	10 HT S		1980	2185	2390	2590	2795	3000													

	Size	Tread Pattern	SW mm	OD mm	SLR mm	RC mm	SRI	Rim	Permitted Rim	Type	Tube										
Pressure	460/85R38 149A8 146B (18.4R38)	Radial 85	480	1735	765	5200	825	W16L	W15L DW15L DW16L	TUBELESS	18.4-38 TR218										
	psi											6	9	12	15	17	20	23	26	28	30
	bar											0,4	0,6	0,8	1,0	1,2	1,4	1,6	1,8	1,9	2,1
Max. Load (kg)	50 S		1950	2155	2360	2560	2760	3000													
	40 S		2140	2365	2590	2810	3030	3250													
	30 S		2290	2535	2775	3010	3245	3480													
	10 LT S	2595	2900	3205	3510	3815	4120	4425	4725	4875	5525										
	10 HT S		2290	2535	2775	3010	3245	3480													

	Size	Tread Pattern	SW mm	OD mm	SLR mm	RC mm	SRI	Rim	Permitted Rim	Type	Tube										
Pressure	520/85R38 155A8 152B (20.8R38)	Radial 85	550	1845	815	5525	875	DW18L	W16L W18L DW16L	TUBELESS	20.8-38 TR218										
	psi											6	9	12	15	17	20	23	26	28	30
	bar											0,4	0,6	0,8	1,0	1,2	1,4	1,6	1,8	1,9	2,1
Max. Load (kg)	50 S		2325	2565	2805	3045	3290	3550													
	40 S		2550	2815	3080	3345	3610	3875													
	30 S		2730	3015	3300	3580	3865	4150													
	10 LT S	3105	3470	3835	4195	4555	4915	5275	5635	5815	6590										
	10 HT S		2730	3015	3300	3580	3865	4150													

	Size	Tread Pattern	SW mm	OD mm	SLR mm	RC mm	SRI	Rim	Permitted Rim	Type	Tube										
Pressure	520/85R42 157A8 154B (20.8R42)	Radial 85	550	1945	855	5825	925	DW18L	W16L W18L DW16L	TUBELESS	20.8-42 TR218										
	psi											6	9	12	15	17	20	23	26	28	30
	bar											0,4	0,6	0,8	1,0	1,2	1,4	1,6	1,8	1,9	2,1
Max. Load (kg)	50 S		2710	2995	3280	3565	3845	4125													
	40 S		2710	2995	3280	3565	3845	4125													
	30 S		2900	3205	3510	3815	4115	4415													
	10 LT S	3305	3690	4075	4460	4845	5230	5615	6000	6190	7015										
	10 HT S		2900	3205	3510	3815	4115	4415													



Printed on recycled paper

MAXIMO

WWW.MAXIMO-TYRES.COM



Trelleborg Wheel Systems Italia S.p.A.
Via Nazionale Tiburtina, 143 - 00010 Villa Adriana (RM) Italy
Phone: +39 0774 384701 - Fax: +39 0774 384702
email: info@maximo-tyres.com