



TRUCK & BUS RADIAL TYRE



GS[®] Jiangsu General Science Technology Co.,Ltd

Add: Donggang town, Wuxi city, Jiangsu Province, China

Tel: 0086-0510-66868791

Fax: 0086-0510-66868791

Add: NO.7/538 MOO.6 T. MABYANGPORN, A. PLUAKDAENG,
RAYONG 21140.

A Holding Subsidiary of HODO Group
(Ranked No.278 Top 500 Chinese Enterprises, 2021)

Listed in Shanghai Stock Exchange
(Stock Code 601500)

Ranked No.49 Global Tyre Company
(2020, by "Tyre Business" of US)

Manufacturing Bases Located China, Thailand and
Cambodia

TBR Capacity 7.2M, PCR 14M (2020)

National-Recognized Enterprise Technology
Center, CNAS Approved Laboratory

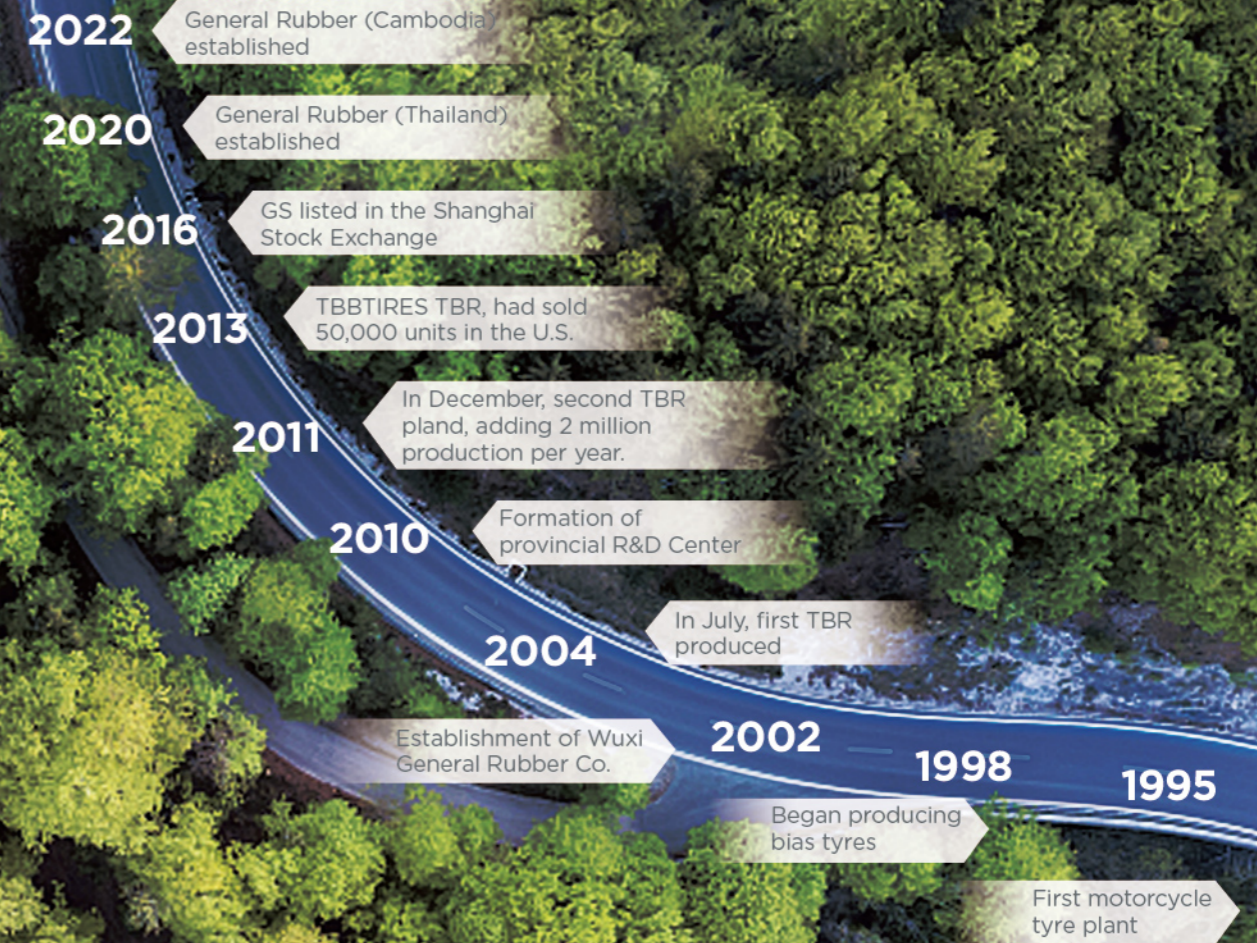
Intelligent Manufacturing



- 5 Manufacturing Base around the World
- 5 Research and Development Center
- 5 Hundred Strategic Cooperation Channels
- 5 Thousand Branded Stores
- 50 Million Product Capacity

GS COMPANY DEVELOPMENTS

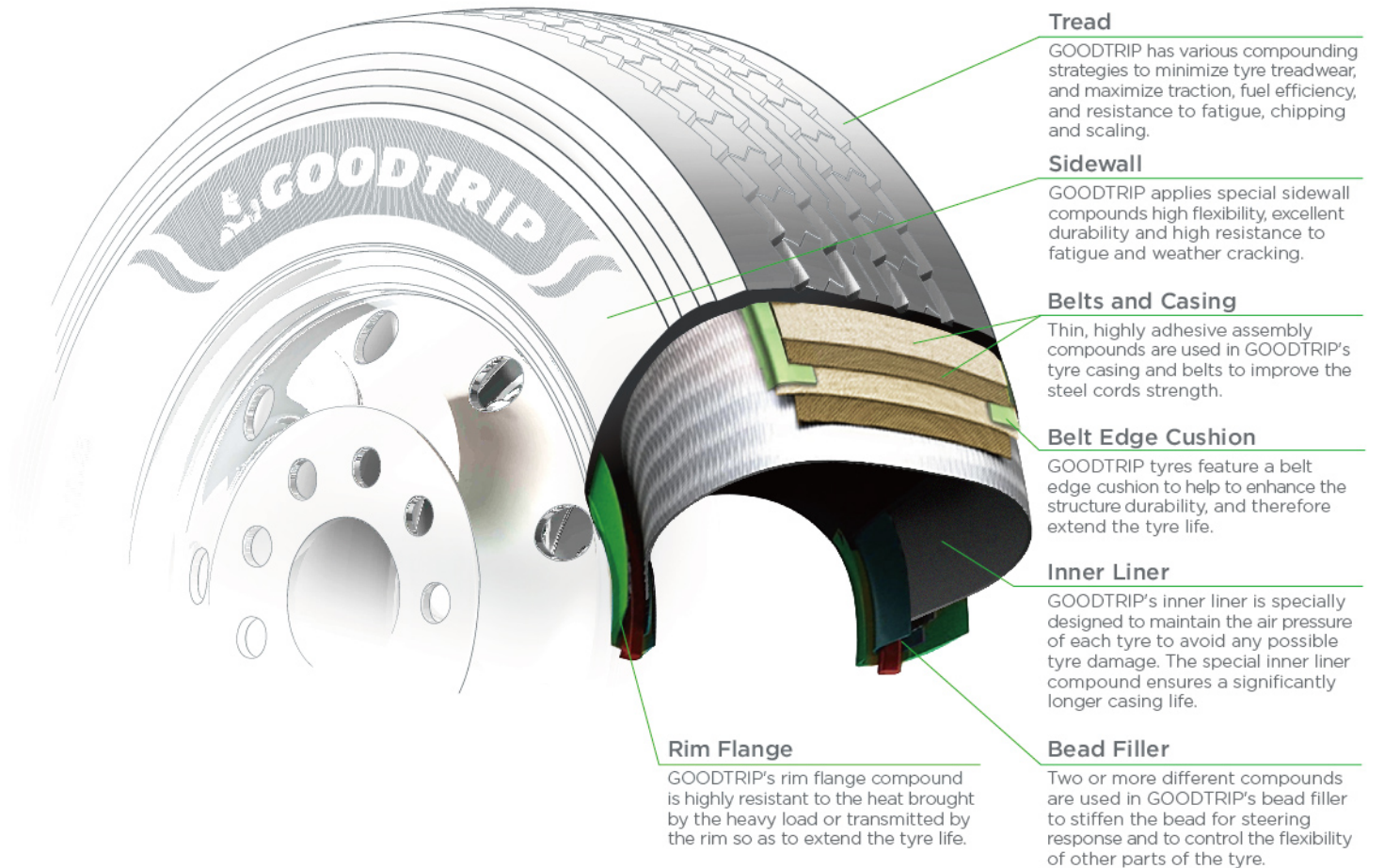
And the development of GS company its own, is also legendary & with great hardship.



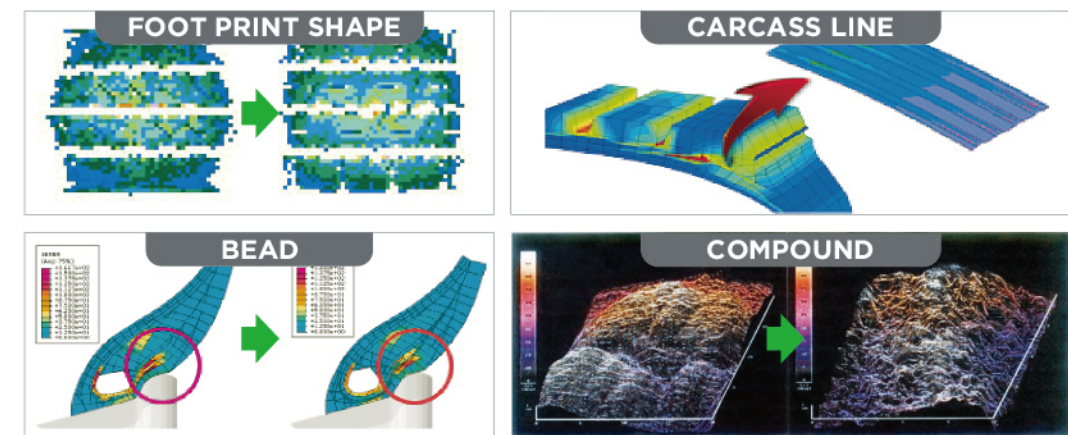
TYRE SIDEWALL INSTRUCTION



A series of internationally used numbers and codes exist for the identification of tyre structures, dimensions and main applications as well as the producer information. This group of codes and numbers is collectively known as the "tyre markings" and permits a precise identification of the tyre. The picture below gives an example of the tyre markings as they appear on a tyre.



I-FEAT stands for Integrated Finite Element Analysis Technology. I-FEAT is a product design system based on FEA big data. It's tyre design technology for comprehensive analysis of Construction, Compound, Deformation, Heat buildup, Foot Print shape.



How to Read the Pattern Name

GMT50

GOODTRIP

S A D T Product Version
Steer All-Position Drive Trailer

H M F B S
Highway Mixed Off Road Bus Snow



ALL-POSITION	 GHA20 07	 GMA30 09		
DRIVE	 GHD20 08	 GMD30 10		
TRAILER	 GHT22 06 GHT50 11	 GMT50 12		

POSITION: TRAILER

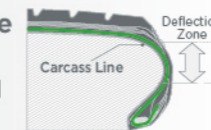
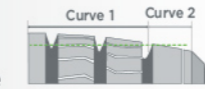
GHT22



Recommended Application
Long Haul Service / Regional Haul Service



- GS I-FEAT Technology**
Ensures high efficient tyre contour with high durability and even tread wear
- Chamfered Shoulder**
Reduces the stress on the shoulder, improves heat resistance and durability
- Straight Outer Tread Groove**
Improves the drainage performance
- Dural Tread Radius**
Makes even ground contacting area, improves the wear resistance
- Optimized Carcass Line Profile**
Positions the most suitable deflection zone, reduces sidewall heat generation



Size	LI / SI	PR	Rolling Resistance	Wet Grip	Noise dB	Noise Level
435/50R19.5	160 J	22	C	A	72	B
445/45R19.5	160 J	22	C	A	72	B

POSITION: ALL-POSITION

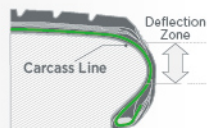
GHA20



Recommended Application
Long Haul Service / Regional Haul Service



- **GS I-FEAT Technology**
Ensures high efficient tyre contour with high durability and even tread wear
- **Reinforced Tread Rib and Sipes**
Provides high traction capability
- **Stone Ejection Bar on Tread Grooves**
Reduces the tread cuttings
- **Wide & Grooved Shoulder**
Improves the drainage performance
- **Dural Tread Radius**
Makes even ground contacting area, improves the wear resistance
- **Optimized Carcass Line Profile**
Positions the most suitable deflection zone, reduces sidewall heat generation, improved handling performance and driving comfort



POSITION: DRIVE

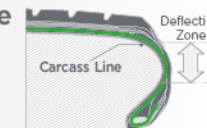
GHD20



Recommended Application
Long Haul Service / Regional Haul Service



- **GS I-FEAT Technology**
Ensures high efficient tyre contour with high durability and even tread wear
- **Muscled Tread Block**
Transverse sipes provide excellent traction, independent outer tread blocks provide constant gripping performance
- **Connecting Rib**
Reduces tread deformation, improved wear resistance and heat resistance
- **Optimized Carcass Line Profile**
Positions the most suitable deflection zone, reduces sidewall heat generation



Size	LI / SI	PR	Rolling Resistance	Wet Grip	Noise dB	Noise Level
215/75R17.5	128/126 M	14				
235/75R17.5	132/130 M	16				
245/70R17.5	136/134 M	14				
245/70R19.5	136/134 M	16				
265/70R19.5	140/138 M	14				
295/60R22.5	150/147 K	18	C	B	70	A
295/80R22.5	154/149 M	18	C	B	70	A
315/70R22.5	154/151 M (156/150 M)	20	C	B	70	A
315/80R22.5	154/151 M (157/154 L)	18	C	B	70	A

Size	LI / SI	PR	Rolling Resistance	Wet Grip	Noise dB	Noise Level
215/75R17.5	126/124 M	12				
235/75R17.5	132/130 M	16				
245/70R17.5	136/134 M	14				
245/70R19.5	136/134 M	14				
265/70R19.5	140/138 M	14				
295/60R22.5	150/147 K	18	D	C	75	B
295/80R22.5	154/149 M	18	D	C	75	B
315/70R22.5	154/151 M (156/150 M)	20	D	C	75	B
315/80R22.5	154/151 M (157/154 L)	18	D	C	75	B



07



08

TRUCK & BUS RADIAL TYRE

POSITION: ALL-POSITION

GMA30



Recommended Application
Mixed Road Service



- GS I-FEAT Technology**
 Optimized tread design provides reliable performance for mixed road all wheel positions, excellent even wear and durability
- Muscled Shoulder and Ribs**
 Reduces deformation and early abnormal wear
- Asymmetric Tread Groove**
 Asymmetrical grooves at tread and bottom provide excellent drainage performance and stone eject performance
- Dural Tread Radius**
 Makes even ground contacting area, improves the wear resistance



POSITION: DRIVE

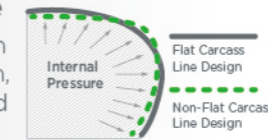
GMD30



Recommended Application
Mixed Road Service



- GS I-FEAT Technology**
 Optimized tread with even distributed stress provides reliable performance for mixed road all wheel positions, excellent even wear and durability
- Diagonal Arranged Tread Blocks**
 Provide high efficient stress distribution, high traction and reduce uneven wear
- Open Shoulder and Ribs**
 Provide high gripping performance, reduce deformation at tyre shoulder, improve the heat resistance and wear resistance
- Optimized Carcass Line Profile**
 Positions the most suitable deflection zone, reduces sidewall heat generation, improved handling performance and driving comfort



Size	LI / SI	PR	Rolling Resistance	Wet Grip	Noise dB	Noise Level
13R22.5	156/153 L	20	D	B	71	A
315/80R22.5	154/151 M (157/154 L)	18	D	B	71	A

Size	LI / SI	PR	Rolling Resistance	Wet Grip	Noise dB	Noise Level
13R22.5	156/153 L	20	D	B	73	B
315/80R22.5	154/151 M (157/154 L)	18	D	B	73	B



POSITION: TRAILER

GHT50



Recommended Application
Long Haul Service / Regional Haul Service



• **GS I-FEAT Technology**

Ensures high efficient tyre contour with high durability and even tread wear

• **Asymmetric Tread Groove**

Asymmetrical grooves at tread and bottom provide excellent drainage performance and stone ejection performance

• **Dural Tread Radius**

Makes even ground contacting area, improves the wear resistance

• **Optimized Carcass Line Profile**

Positions the most suitable deflection zone, reduces sidewall heat generation, improved handling performance and driving comfort



POSITION: TRAILER

GMT50



Recommended Application
Mixed Road Service



• **GS I-FEAT Technology**

Optimized tread with even distributed stress, ensures even wear and high durability

• **Diagonal Arranged Tread Blocks**

Provide high gripping performance at mixed road conditions

• **Sickle Sipes**

Reduce uneven wear, improve wet surface performance

• **Curved Grooves & Stone Ejection Bars**

Reduces damage on grooves bottom

• **Dural Tread Radius**

Makes even ground contacting area, improves the wear resistance



Size	LI / SI	PR	Rolling Resistance	Wet Grip	Noise dB	Noise Level
385/65R22.5	160 K (158 L)	20	B	B	69	A
385/55R22.5	160 K	20	B	B	69	A
385/55R22.5	158 L	18	B	B	69	A

Size	LI / SI	PR	Rolling Resistance	Wet Grip	Noise dB	Noise Level
385/65R22.5	160 K (158 L)	20	C	B	75	B
385/55R22.5	160 K	20	C	B	75	B
385/55R22.5	158 L	18	C	B	75	B



Sizes & Specifications



Pattern	Size	LI / SI	PR	Standard Rim (inch)	Permitted Rim (inch)	Overall Diameter (mm)	Section Width (mm)	Retreadable	Max Load (Kg) Single / Dual	Static Loaded Radius (mm)	Rolling Circumference (mm)	Pattern Width (mm)	Pressure (bar)	Pattern Depth (mm)	Rolling Resistance	Wet Grip	Noise (dB)	Noise Level
GHT22	435/50R19.5	160 J	22	14.00	15.00	931	438	Yes	4500		2821	368	9.00	13.5	C	A	72	B
	445/45R19.5	160 J	22	15.00	14.00	895	446	Yes	4500		2706	368	9.00	13.5	C	A	72	B
	215/75R17.5	128/126 M	14	6.00	6.75	772	215	Yes	1800/1700	361	2339	188	7.50	12.6				
	235/75R17.5	132/130 M	16	6.75	7.50	797	238	Yes	2000/1900	371	2431	214	7.75	12.1				
	245/70R17.5	136/134 M	14	7.50	6.75	796	248	Yes	2240/2120	371	2406	214	8.00	12.1				
GHA20	245/70R19.5	136/134 M	16	7.50	6.75	842	252	Yes	2240/2120	394	2559	204	8.25	13.6				
	265/70R19.5	140/138 M	14	7.50	6.75/8.25	871	257	Yes	2500/2360	405	2644	220	7.75	13.1				
	295/60R22.5	150/147 K	18	9.00	9.75	926	292	Yes	3350/3075	447	2806	250	9.0	15.5	C	B	70	A
	295/80R22.5	154/149 M	18	9.00	8.25	1044	298	Yes	3750/3250	487	3163	230	8.5	14.5	C	B	70	A
	315/70R22.5	154/151 M (156/150 M)	20	9.00	9.75	1014	312	Yes	3750/3450	469	3072	256	9.0	15.0	C	B	70	A
GHD20	315/80R22.5	154/151 M (157/154 L)	18	9.00	9.75	1076	312	Yes	3750/3450	500	3260	240	8.3	14.5	C	B	70	A
	215/75R17.5	126/124 M	12	6.00	6.75	775	215	Yes	1700/1600	361	2339	194	7.00	13.0				
	235/75R17.5	132/130 M	16	6.75	7.50	798	238	Yes	2000/1900	371	2431	214	7.75	12.6				
	245/70R17.5	136/134 M	14	7.50	6.75	798	248	Yes	2240/2120	371	2406	220	8.00	12.6				
	245/70R19.5	136/134 M	14	7.50	6.75	844	252	Yes	2240/2120	394	2559	224	8.25	13.1				
	265/70R19.5	140/138 M	14	7.50	6.75/8.25	871	260	Yes	2500/2360	405	2644	236	8.00	13.0				
	295/60R22.5	150/147 K	18	9.00	9.75	926	292	Yes	3350/3075	447	2806	264	9.0	20.5	D	C	75	B
	295/80R22.5	154/149 M	18	9.00	8.25	1044	298	Yes	3750/3250	487	3163	250	8.5	20.0	D	C	75	B
	315/70R22.5	154/151 M (156/150 M)	20	9.00	9.75	1014	312	Yes	3750/3450	469	3072	270	9.0	18.5	D	C	75	B
	315/80R22.5	154/151 M (157/154 L)	18	9.00	9.75	1076	312	Yes	3750/3450	500	3260	260	8.3	20.5	D	C	75	B
GMA30	13R22.5	156/153 L	20	9.75	9.00	1124	320	Yes	4000/3650	521	3416	236	9.3	16.5	D	B	71	A
	315/80R22.5	154/151 M (157/154 L)	18	9.00	9.75	1076	312	Yes	3750/3450	500	3260	256	8.3	16.5	D	B	71	A
GMD30	13R22.5	156/153 L	20	9.75	9.00	1124	320	Yes	4000/3650	521	3416	240	9.3	21.5	D	B	73	B
	315/80R22.5	154/151 M (157/154 L)	18	9.00	9.75	1076	312	Yes	3750/3450	500	3260	262	8.3	20.5	D	B	73	B
GHT50	385/65R22.5	160 K (158 L)	20	11.75	12.25	1072	389	Yes	4500/-----	494	3248	296	9.0	15.5	B	B	69	A
	385/55R22.5	160 K	20	12.25	11.75	996	386	Yes	4500/-----	466	3018	312	9.0	15.0	B	B	69	A
	385/55R22.5	158 L	18	12.25	11.75	996	386	Yes	4250/-----	466	3018	312	8.5	15.0	B	B	69	A
GMT50	385/65R22.5	160 K (158 L)	20	11.75	12.25	1072	389	Yes	4500/-----	494	3248	300	9.0	16.5	C	B	75	B
	385/55R22.5	160 K	20	12.25	11.75	996	386	Yes	4500/-----	466	3018	312	9.0	17.0	C	B	75	B
	385/55R22.5	158 L	18	12.25	11.75	996	386	Yes	4250/-----	466	3018	312	8.5	17.0	C	B	75	B

Load Index & Speed Index

Load Index (LI)									
LI	KG	LI	KG	LI	KG	LI	KG	LI	KG
101	825	111	1090	121	1450	131	1950	141	2575
102	850	112	1120	122	1500	132	2000	142	2650
103	875	113	1150	123	1550	133	2060	143	2725
104	900	114	1180	124	1600	134	2120	144	2800
105	925	115	1215	125	1650	135	2180	145	2900
106	950	116	1250	126	1700	136	2240	146	3000
107	975	117	1285	127	1750	137	2300	147	3075
108	1000	118	1320	128	1800	138	2360	148	3150
109	1030	119	1360	129	1850	139	2430	149	3250
110	1060	120	1400	130	1900	140	2500	150	3350

Load Index & Speed Index

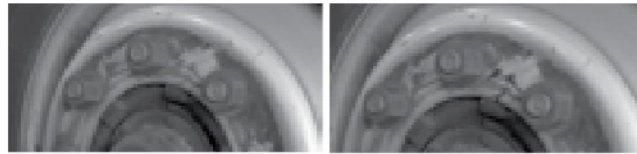
Load Index (LI)				Speed Index (SI)					
LI	KG	LI	KG	Km/h	SI	MPH	Km/h	SI	MPH
161	4625	171	6150	A1	5	3	D	65	40
162	4750	172	6300	A2	10	6	E	70	43
163	4875	173	6500	A3	15	9	F	80	50
164	5000	174	6700	A4	20	12	G	90	56
165	5150	175	6900	A5	25	16	J	100	62
166	5300	176	7100	A6	30	19	K	110	68
167	5450	177	7300	A7	35	22	L	120	75
168	5600	178	7500	A8	40	25	M	130	81
169	5800	179	7750	B	50	31	N	140	87
170	6000	180	8000	C	60	37			

MOUNTING & DEMOUNTING

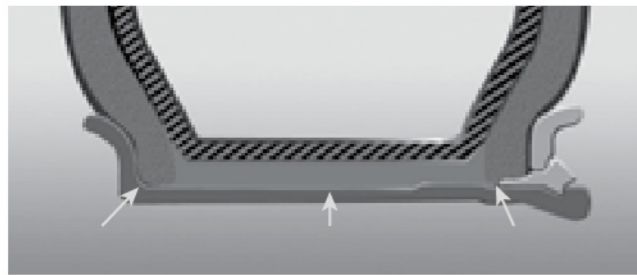
SAFETY INSTRUCTIONS

Do not mount or demount tyres without proper training. Wall charts containing mounting and demounting instructions for all highway rims should be available through your normal rim supplier.

Remove all cracked wheels from service



Lubricate areas shown by arrows



Use of GG ring to indicate correct mounting



Proper sequence for tightening stud nuts



on an 8 stud system

Note: Always use a securely held safety cage and extension hose with clip on air chuck for airing the tyre. Rapid air loss can propel the assembly.

SETTING FINAL INFLATION PRESSURE

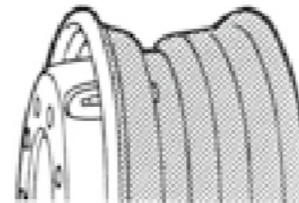
Install a new valve core each tyre a new tyre is mounted. Use a tyre safety cage and a remote operating air nozzle. Re-check that the assembly is going together properly at every stage of the process.

Inflate in stages, re-checking that the assembly is going together properly at every stage until the recommended inflating pressure is reached. Then add a valve cap after adjusting to the final recommended pressure.



Base Part of Tubeless Rim

The Tubeless tyre rim
Parts marked "///" are to be cleaned and lubricated.



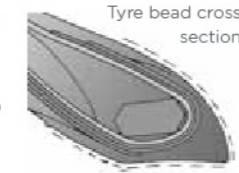
RIM PREPARATION

- Rim must not be broken or damaged.
- Remove the rubber bushing from the valve stem hole. Inspect the valve stem for any signs of damage or wear.
- Remove rust, dirt and any foreign materials from the rim. Clean and sand smooth the area marked "///" in the above picture. If rusted, clean and repaint the rim surface to protect it from rusting.
- If required, replace any worn or damaged valve stem.
- Lubricate the inner parts of the rim surface where the tyre mounts (marked "///")

TUBELESS TYRE MOUNTING

TYRE PREPARATION

In the case of new tyres, wipe the bead clean with a dry cloth and verify that it is not damaged, kinked, or broken. Apply the recommended lubricant to the tyre bead as per the following illustration.



INSIDE BEAD ASSEMBLY

Lay the wheel on a clean flat surface with the valve facing upward. Work the bead over the rim flange, using your hands and knees as in the illustration below. If it is difficult to fit over the flange, use the proper tyre mounting lever as per the illustration.



OUTSIDE BEAD ASSEMBLY

Start the outside bead placement over the outside rim flange by hand. Begin at the point where the valve stem is located. Once hand placement become difficult, use the proper tubeless tyre bead mounting lever to complete the job as per the following illustrations. When mounting tyres, do not use excessive force and avoid heavy tools or impacts such as hammering on the rim.



TUBELESS TYRE INFLATION

Use an inflation gauge, suitable remote air hose nozzle, and a safety cage when inflating the new mounting tyre. The lubricated bead should seat firmly to the rim flange at about 10 PSI inflation. Do not stand near or in front of tyre while inflating. Use the safety cage and a safe distance for your protection. If the bead fails to seat first try, then rotate the tyre a few degrees around the rim, ensure the rim and bead flange is lubricated and try again. If for any reason the bead does not appear snugly and evenly seated, do not attempt to inflate further. Repeat the entire assembly process with perhaps more lubricant on the bead and rim areas.

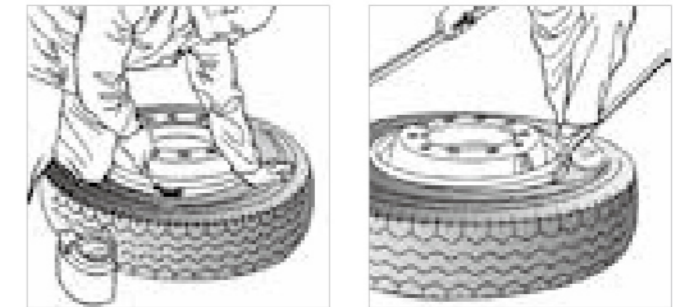
Once the bead seats the bead and rim flange are a snug even fit all the way around. Then inflate the tyre to the recommended inflation pressure to the axle load. Check that the tyre or valves are not leaking and tighten on a valve cap.

TUBELESS TYRE DEMOUNTING

The tyre should be completely deflated before demounting. This is done by loosening and removing the valve stem core, being careful that there is no foreign matter left in the valve and that the valve stem is not cracked or damaged. Do not stand near the valve stem during the deflation process.

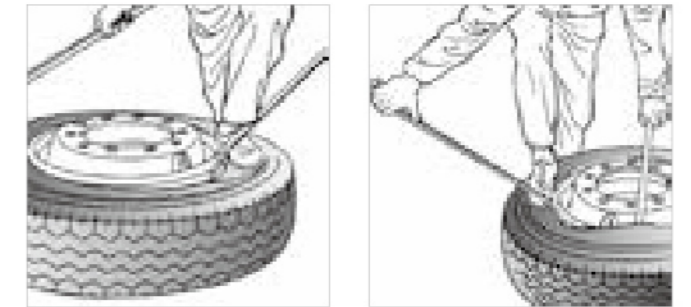
BEAD DEMOUNTING

Place the tyre assembly on a clean flat surface with the valve facing upward. Use a tyre demounting lever



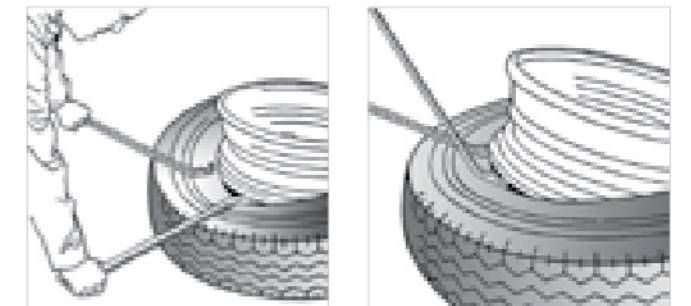
OUTSIDE BEAD DEMOUNTING

Use the tyre demounting lever to pry the bead over the rim flange directly in line with the valve stem as per the following illustrations. A second lever is used about 30cm around the rim from the first to pry the bead over the flange. Repeat the process around the tyre until the outside bead is fully demounted.



INSIDE BEAD DEMOUNTING

Turn the tyre assembly over. Lubricate between the bead and the rim then insert the tip of the tyre lever between the tyre and rim and apply pressure. Use the second lever about 15 cm around the edge of the rim. Repeat the order until the bead is completely demounted.



LIMITED WARRANTY

FOR TRUCK&BUS RADIAL TYRES AGAINST MANUFACTURING DEFECTS

The following limited warranty contains certain rights and obligations that pertain to truck&bus radial (TBR) tyres manufactured by Jiangsu General Science Technology Co., Ltd. and its subsidiary General Rubber (Thailand) Co., Ltd. Please review these rights and obligations carefully.

WHAT IS COVERED AND FOR HOW LONG

This Limited Warranty covers TBR tyres presented & provided by Jiangsu General Science Technology Co., Ltd. and its subsidiary General Rubber (Thailand) Co., Ltd. (hereafter called "GS") for adjustment on or after Jun., 2021. The limited warranty is in effect for 3 years commencing on the date of manufacture. The date of manufacture indicated on the serial number will be used as the warranty commencement date.

WHO IS ELIGIBLE

You are eligible for the benefits of this limited warranty if you are the original purchaser or authorized agent of the original purchaser of new GS manufactured TBR tyres bearing complete serial numbers.

Amount of Credit to the Customer for Workmanship and Material Condition

Percentage of Remaining Tread Depth (RTD)	91%-100%	81%-90	71%-80%	61%-70%	51%-60%	41%-50%	31%-40%	21%-30%	11%-20%	0-10%
tyre Age	COMPENSATION									
1-3 Years	100%	Actual %	Actual %	Actual %	Actual %	40 %	0	0	0	0
More than 3 Years	0	0	0	0	0	0	0	0	0	0

Notes: The calculation of claim tyre compensation is based on the FOB cost of tyre.

WARRANTY LIMITATIONS

This limited warranty is applicable to the original purchaser and is not assignable to subsequent purchasers.

No GS 's dealer, agent, or representative has the authority to make or imply any representation, promise or agreement which in any way varies or extends the terms of this warranty.

Any TBR tyre, no matter how well manufactured, may fail in service or otherwise become unserviceable due to conditions beyond the control of the manufacturer. This limited warranty is under no circumstances a representation that a tyre failure cannot occur.

This limited warranty gives you specific rights and you may also have other rights, which may vary from jurisdiction to jurisdiction. To the extent that the provisions of any applicable legislation expressly replace, eliminate, amend or prohibit any term or terms contained herein, such term or terms shall be accordingly replaced, eliminated, amended or extended, as the case may be, in accordance with such legislation.

MEASURE OF REMAINING TREAD DEPTH

1. Vernier caliper (or professional caliper) is used. When measuring, avoid the wearing mark. And the vernier caliper (or professional caliper) must be vertical to the bottom of tread groove.
2. The position of measure: Groove depth of middle line on

COVERAGE

If any TBR tyre provided by GS and covered by this limited warranty becomes unserviceable due to a covered warranty condition, such tyre will, at the option of GS, be repaired or replaced with a comparable new TBR tyre, discounted on a prorata basis, or, at the GS option, GS will issue an appropriate credit. The customer charge for replacement will be calculated by multiplying GS's current replacement tyre price at the adjustment location (exclusive of taxes), by the percentage determined from the following chart. In the event GS issues a credit, the credit will reflect the discount that would have been included in the foregoing charge.

Upon examination by GS, before wearing down to 3.2mm (highway application) and 2mm (normal condition) remaining original tread depth (i.e. worn the top of build-in indicators in the original tread grooves) within three years from the date of manufacturer, any eligible tyre that becomes unusable for any reason within the manufacturer's control will set forth in this limited warranty.

the tread or depth of the leading groove nearest to the tread center.

3. Avoid the strengthening veins and position of wearing mark when measuring.
4. Calculation of tread depth: Measure the depth of four equal indexes on the tread circle, and the average value of the four data is regarded as the remaining tread depth.

INFORMATION REQUIREMENT ABOUT CLAIM TYRE

If any TBR tyre provided by GS and covered by this limited warranty becomes unserviceable due to a covered warranty condition, GS will settle the claim tyre through the way of PRECLAIM as soon as possible. Please provide information as detailed as possible.

1. Photos of each tyre must be provided in separate folder and requirements as follows:
 - One showing the tyre Serial No. that circled by whitewash or other colors
 - One showing full picture of tyre with brand name in sight for each sidewall
 - One or more showing damages in close zoom
 - One or more showing surroundings of damages taken in far zoom
 - One or more showing the inner of damages section
 - One or more showing the measuring remaining tread depth
 - One or more showing the vehicle picture and the worst

performance conditions.

2. Please fill in the GS TBR TYRES PRECLAIM REPORT.

ABOUT THE PRECLAIM TYRES

After settlement of the compensation, the ownership of the claim tyres belongs to GS. GS reserves the right to take any further action on the claimed tyres. Please issue documents that prove the replaced tyres are delivered to the end users for necessary supplement of PRECLAIM REPORT.

Please well-keep these claimed tyres before GS after service engineers pay an on-site visit to verify the claim. Claimed tyre missing during on-site visit and/or the findings during the visit different from submitted claim will be considered as a dishonest conduct. The full compensation is required to pay back to GS immediately.

LIMITED WARRANTY EXCLUSIONS

Tyres with following conditions are not covered by this limited warranty.

1. Tyres purchased more than 3 years prior to presentation. If you have no proof of purchase date, tyres manufactured more than 3 years prior to presentation.
2. Tyres that series numbers worn out.
3. Tyres for which an alternate warranty/guarantee has been negotiated.
4. Tyres used chains.
5. Use of any solid type of fill.
6. Tyres will any material added (i.e. tyre fill, sealer, balancer and etc.).
7. Tyres with any modifications (i.e. (added buttress shoulders, re-grooving, re-lugging, etc.).
8. Tyres with irregular wear or damage resulting from,
 - 8.1 Road hazards (i.e. punctures, snags, cuts, impact breaks and etc.)
 - 8.2 Wreck, collision, or fire
 - 8.3 Improper inflation, overloading, high speed spin up, wrong application, misuse, racing, chain damage, improper mounting or dismounting
 - 8.4 Mechanical condition of the vehicle
 - 8.5 Intentionally modifications
 - 8.6 Willful abuse
 - 8.7 Ozone or weather cracks during original tread life on tyres more than 3 years from date of manufacture
 - 8.8 Mechanical defects (such as brakes, shocks, worn steering and/or suspension parts, rim, etc.)
 - 8.9 Accident or vandalism, improper misalignment, wheel imbalance, faulty shocks or brakes
 - 8.10 Misapplication of tyre, use of improper rim and/or improper inner tube
 - 8.11 Faulty retreading or form filling

Following cost are not covered by this warranty,

1. Cost associated with the repair of tyres, unless previously approved by GS.

2. Cost of mounting and balancing following pro-rated replacement or repair of tyres or tubes, and applicable federal, state, provincial and local taxes.

3. Cost of disposal of warranted tyres.

GS DISCLAIMS ANY WARRANTY OF FITNESS, MERCHANTABILITY, OR FITNESS FOR A PARTICULAR PURPOSE. THIS WARRANTY DOES NOT INCLUDE LOSS OF TIME, LOSS OF EQUIPMENT, LOSS OF PROFIT/ECONOMIC LOSS, LOSS OF USE OF VEHICLE, INCONVIENCE, ANY INCIDENTAL PUNITIVE OR CONSEQUENTIAL DAMAGES, PERSONAL INJURY OR DEATH.

WHAT ARE YOUR LEGAL RIGHTS

Some countries and areas do not allow the exclusion or limitation of incidental or consequential damages, so the above limitations or exclusions may not apply to you.

OWNERS OBLIGATIONS

1. You must present the tyre to be considered for adjustment to an authorized GS dealer or GS Service Representative.
2. You must pay for taxes, mounting and any additional services you order at the time of adjustment. For imported by or specifically for a Buyer (or his agent), GS 's responsibility will be based upon the Cost & Freight Port of Entry tyre value prior to payment of import duties.
3. No claim will be recognized unless the product is inspected and a GS Representative submits a claim electronically or on a GS claim form into GS's TBR Adjustment database. All adjustments are confirmed by email.
4. Onboard machine cycle, payload and productivity information must be made available to the authorized GS Dealer or GS Service Representative when requested.
5. Replaced tyres may be incapacitated. Disposal of the tyre is the responsibility of the owner.

NOTICE

Property Damage, Serious Injury or Death may result from FAILURE DUE TO UNDERINFLATION/OVERLOADING.

Follow owner's manual or tyre placard placed in the vehicle.

EXPLOSION OF TYRE / RIM ASSEMBLY DUE TO IMPROPER MOUNTING.

Consider using nitrogen to inflate TBR tyre to reduce the risk of explosive tyre failure.

Only trained and authorized persons are allowed to mount tyres.

FOR ASSISTANCE

1. Contact an authorized GS dealer or representative. Please be prepared to provide proof of purchase of the product and purchase date.
2. The authorized dealer or representative will contact GS to arrange the inspection of the tyre in question and process your claim. The dealer has no authority or responsibility to make the determination as to eligibility for coverage under this limited warranty.



GS Jiangsu General Science Technology Co.,Ltd

Add: Donggang town, Wuxi city, Jiangsu Province, China

Tel: 0086-0510-66868791

Fax: 0086-0510-66868791

Add: NO.7/538 MOO.6 T. MABYANGPORN, A. PLUAKDAENG,
RAYONG 21140.

TRUCK & BUS
2022 GOODTRIP TYRE
TYRE CATALOG