

TRUCK AND BUS

TECHNICAL DATA BOOK



apollo
TYRES

GO THE ————— DISTANCE

WHAT OTHERS SAY...



ROMET sp. z o.o., Podgrodzie, Poland

"Since we started using Apollo Tyres two years ago, we have been extremely pleased with their exceptional performance. The price/performance ratio is simply unbeatable. We have found Apollo Tyres to be highly reliable and long-lasting, providing us with impressive mileage. The Apollo 385/55R22.5 EnduRace RT, in particular, have been exceptional on our multi-trailer. To date, they have achieved a remarkable 171,000 KM at only 40% wear. Based on this, we estimate that they will achieve an impressive 388,000 KM at this rate or an average of 31,000 KM per 1 MM of tread. For heavy haulage users, we wholeheartedly recommend Apollo Tyres - they have been a game-changer for our business."

Peet Borst Bandentechnik B.V., Schoonhoven, The Netherlands

"We are a versatile tyre company that have consistently achieved success since 2020 with Apollo Truck and Bus Tyres. What sets Apollo carcasses apart is their remarkable quality and exceptional retreadability - a fact that has been attested to by the factory. Thanks to their superior quality, we can offer end users the best options to achieve the lowest mileage cost and highest mileage return."



Goodall Transport Ltd., Halifax, United Kingdom

"Based on our experience of running Apollo TBR products in our fleet for the past twelve months, we can confidently say that these products offer exceptional quality, outstanding performance, and great value for money."

Schwarz Müller, Freinberg, Austria

"We take great pride in our partnership with Apollo Tyres, a renowned innovator in the tyre industry. Their products consistently deliver best-in-class standards of performance and safety. Our association with Apollo Tyres enables us to offer our global customer base a comprehensive range of premium performance tyres suitable for all-season conditions."



Euro-Services, Aiseau-Presles, Belgium

"We chose this brand because of their excellent value and outstanding service. Ever since incorporating Apollo tyres into our fleet, we've noticed a significant enhancement in tyre performance and durability. These tyres exhibit excellent grip on wet or slippery surfaces, which has helped us reduce our tyre maintenance expenses. I strongly endorse Apollo Tyres for those seeking top-notch quality tyres at an affordable rate."

CONTENTS

Page 4	Apollo at a glance
Page 7	Segmentation
Page 8	Truck and bus tyre portfolio
Page 12	Endu™Race RA, RD & R front HD
Page 13	Endu™Race RA, RA 2, RD & RD 2
Page 14	Endu™Race RT and RT 2
Page 15	Endu™Trax MA and MD
Page 16	Endu™Comfort CA
Page 17	Endu™City UA
Page 18	Endu™Mile LHT
Page 20	Technical data
Page 22	Load and speed table
Page 24	Mis-alignment indicator
Page 26	Regrooving
Page 30	Sidewall markings
Page 32	Construction and dimensions
Page 34	European tyre labelling

APOLLO AT A GLANCE

We are Apollo, a global leader in tyre manufacturing with a strong presence in the truck and bus tyre segment. With over 50 years of industry experience and a global workforce of over 18,000 employees, we export to more than 100 countries worldwide. Our brand comprises two major names: Apollo and Vredestein, both of which have gained immense popularity among our customers.

TECHNOLOGY DRIVES QUALITY

Our TBR tyres have been designed especially for European conditions and developed by our R&D team based in the Netherlands. We have invested significantly in R&D, with over 1,500 engineers working across four global centers, ensuring that we remain at the forefront of tyre technology. Our TBR portfolio is the result of a rigorous five-year testing and development program across Europe, backed by multimillion-euro investments in R&D. Prior to launch, our partner test fleets extensively tested almost 3,400 tyres over 360 million kilometers in six European countries, under genuine conditions.

At Apollo Tyres, we believe in delivering products that are highly reliable, efficient, and performance-driven. Our TBR tyres have achieved impressive results, with tests showing 90-110% mileage versus best-in-class tyres. As a result, our customers have expressed high levels of satisfaction with our products, which are designed to meet the needs of demanding trucking applications.

With state-of-the-art manufacturing facilities, significant investments in R&D, and a strong focus on customer satisfaction, we are committed to delivering the best products to our European customers. We take pride in our heritage and reputation as a global leader in the tyre industry and look forward to partnering with you to meet your trucking needs.





OUR SEGMENTATION

WHAT IS A PRODUCT SEGMENT?

A segment defines our product offer for customers with similar usage requirements; it is a combination of both road conditions and tyre features.

All Apollo truck and bus radial tyre names start with **-Endu™**. This reflects both the endurance and durability of our high-mileage performance tyres.

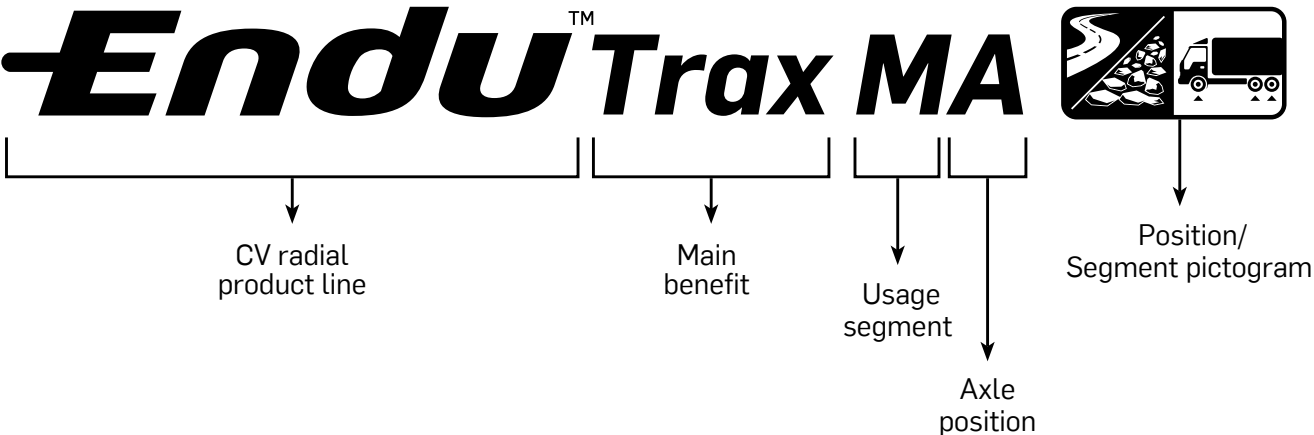
Apollo has defined six segments for addressing specific customer requirements

- R** = Regional
- M** = Mixed
- LH** = Long haul
- U** = Urban
- C** = Coach
- W** = Winter

We develop different patterns to address all axle positions:

- A** = All wheel
- F** = Front
- D** = Drive
- T** = Trailer

ILLUSTRATION



TRUCK AND BUS TYRE PORTFOLIO

We have put together a complete overview of our range, with recommended areas of use, to help you identify the right tyre for your application quickly and easily. Our aim is to ensure that you get the most out of your tyres, whether you are looking for high mileage, low rolling resistance, or optimal performance in specific conditions.

ALL WHEEL



ENDU™RACE RA (17.5)

ENDU™RACE RA & RA HD (22.5)

ENDU™RACE RA 2 (22.5)



ENDU™TRAX MA & MA HD (22.5)

ENDU™COMFORT CA (22.5)

ENDU™CITY UA (22.5)''



FRONT



ENDU™RACE R FRONT & R FRONT HD (22.5)



DRIVE



ENDU™RACE RD (22.5)

ENDU™RACE RD 2 (22.5)

ENDU™RACE RD (17.5)

ENDU™TRAX MD (22.5)



TRAILER



ENDU™RACE RT (17.5)

ENDU™RACE RT (22.5)

ENDU™RACE RT 2 (22.5)

ENDU™MILE LHT (22.5)



REGIONAL

MIXED

<p>Front</p>	<p>385/55 R22.5 Endu™Race R Front 385/65 R22.5 Endu™Race R Front HD</p>	
<p>All Wheel</p>	<p>215/75 R17.5 Endu™Race RA 225/75 R17.5 Endu™Race RA 235/75 R17.5 Endu™Race RA 245/70 R17.5 Endu™Race RA 295/80 R22.5 Endu™Race RA HD 315/70 R22.5 Endu™Race RA 2 315/80 R22.5 Endu™Race RA</p>	<p>13 R22.5 Endu™Trax MA 295/80 R22.5 Endu™Trax MA 315/80 R22.5 Endu™Trax MA 385/65 R22.5 Endu™Trax MA HD</p>
<p>Drive</p>	<p>215/75 R17.5 Endu™Race RD 225/75 R17.5 Endu™Race RD 235/75 R17.5 Endu™Race RD 245/70 R17.5 Endu™Race RD 295/80 R22.5 Endu™Race RD 315/70 R22.5 Endu™Race RD 315/70 R22.5 Endu™Race RD 2 315/80 R22.5 Endu™Race RD 2</p>	<p>13 R 2.5 Endu™Trax MD 295/80 R22.5 Endu™Trax MD 315/80 R22.5 Endu™Trax MD</p>
<p>Trailer</p>	<p>215/75 R17.5 Endu™Race RT 235/75 R17.5 Endu™Race RT 245/70 R17.5 Endu™Race RT 385/55 R22.5 Endu™Race RT 385/55 R22.5 Endu™Race RT 2 385/65 R22.5 Endu™Race RT 2</p>	



LONG HAUL	COACH	URBAN
------------------	--------------	--------------

--	--	--

	<p>295/80 R22.5 Endu™Comfort CA</p> <p>315/80 R22.5 Endu™Race RA *</p>	<p>215/75 R17.5 Endu™Race RA *</p> <p>225/75 R17.5 Endu™Race RA *</p> <p>235/75 R17.5 Endu™Race RA *</p> <p>245/70 R17.5 Endu™Race RA *</p> <p>275/70 R22.5 Endu™City UA</p>
--	--	--

	<p>295/80 R22.5 Endu™Comfort CA</p> <p>315/80 R22.5 Endu™Race RA *</p>	<p>215/75 R17.5 Endu™Race RD *</p> <p>225/75 R17.5 Endu™Race RD *</p> <p>235/75 R17.5 Endu™Race RD *</p> <p>245/70 R17.5 Endu™Race RD *</p>
--	--	---

<p>385/65 R22.5 EnduMile LHT</p>		
----------------------------------	--	--

* These tyres are also suitable for additional segments

REGIONAL

ENDU™RACE RA (17.5) LONG-LIFE, ALL-WHEEL TYRE

The Endu™Race RA is a long-life all-wheel tyre with multiple retread potential; perfect for regional and distribution transport.

TYRE SIZE	PR	LOAD INDEX	SPEED SYMBOL				dB	
215/75 R17.5	14	126/124	M	✓	D	C	71	A
225/75 R17.5	14	129/127	M	✓	D	C	71	A
235/75 R17.5	14	132/130	M	✓	D	B	71	A
245/70 R17.5	14	136/134	M	✓	D	B	71	A



ENDU™RACE RD (17.5) LONG-LIFE DRIVE TYRE WITH EXCELLENT TRACTION

The Endu™Race RD is a long-life drive tyre with optimum traction, developed for regional and distribution transport. It is also suitable for long distance transport.

TYRE SIZE	PR	LOAD INDEX	SPEED SYMBOL				dB	
215/75 R17.5	14	126/124	M	✓	E	C	74	B
225/75 R17.5	14	129/127	M	✓	D	C	74	B
235/75 R17.5	14	132/130	M	✓	D	C	74	B
245/70 R17.5	14	136/134	M	✓	D	B	74	B



ENDU™RACE R FRONT & R FRONT HD (22.5) HIGH-MILEAGE STEER TYRE FOR PRECISE HANDLING

The Endu™Race R Front is exclusively designed for your steer axle, providing excellent mileage with precise handling characteristics.

TYRE SIZE	PR	LOAD INDEX	SPEED SYMBOL				dB	
385/55 R22.5	20	160	K	✓	C	B	73	B
385/65 R22.5 HD	22	164	K	✓	C	B	73	B



ENDU™ RACE RA & RA HD (22.5)

LONG-LIFE, ALL-WHEEL TYRE



The Endu™Race RA is a long-life all-wheel tyre developed for regional and distribution transport. It is also suitable for coach and long distance transport.



TYRE SIZE	PR	LOAD INDEX	SPEED SYMBOL				dB	
295/80 R22.5 HD	16	154/149	M	✓	D	B	73	B
315/80 R22.5	18	156/150	L	✓	C	B	72	B

ENDU™ RACE RA 2 (22.5)

REDEFINE EFFICIENCY ON REGIONAL ROADS WITH THE ENDURANCE RA 2



The Endu™Race RA 2 is designed for regional transport and exceptional performance and efficiency. Its slim tread design, low rolling resistance, and superior grip redefine your regional driving experience.



TYRE SIZE	PR	LOAD INDEX	SPEED SYMBOL				dB	
315/70 R22.5	18	156/150	L	✓	C	B	72	A

ENDU™ RACE RD (22.5)

LONG-LIFE DRIVE TYRE WITH EXCELLENT TRACTION



The Endu™Race RD is a long-life drive tyre with optimum traction, developed for regional and distribution transport. It is also suitable for long distance transport.



TYRE SIZE	PR	LOAD INDEX	SPEED SYMBOL				dB	
295/80 R22.5	16	152/148	M	✓	E	B	75	B
315/70 R22.5	18	154/150	L	✓	D	B	75	B

ENDU™ RACE RD 2 (22.5)

APOLLO NEXT GENERATION PREMIUM REGIONAL DRIVE TYRE



The Endu™Race RD 2 is designed for medium & long-distance transport, outstanding traction performance in all weather conditions and excellent mileage.







TYRE SIZE	PR	LOAD INDEX	SPEED SYMBOL				dB	
315/70 R22.5	18	154/150	L	✓	D	A	75	B
315/80 R22.5	18	156/150	L	✓	D	B	76	B

ENDU™RACE RT (17.5)

HIGH PERFORMANCE FIT-AND-FORGET TRAILER TYRE

The Endu™Race RT is a high-mileage, free-rolling trailer tyre with high scrub resistance and multiple retread potential.

TYRE SIZE	PR	LOAD INDEX	SPEED SYMBOL				dB	
215/75 R17.5	16	135/133	J	✓	D	B	71	A
235/75 R17.5	16	143/141	J	✓	D	B	71	A
245/70 R17.5	16	143/141	J	✓	D	B	71	A



ENDU™RACE RT (22.5)

HIGH PERFORMANCE FIT-AND-FORGET TRAILER TYRE

The Endu™Race RT is a high-mileage, free-rolling trailer tyre with high scrub resistance and multiple retread potential.





TYRE SIZE	PR	LOAD INDEX	SPEED SYMBOL				dB	
385/55 R22.5	20	160	K		C	B	73	B



ENDU™RACE RT 2 (22.5)

HIGH PERFORMANCE FIT-AND-FORGET TRAILER TYRE

The Endu™Race RT 2 combines versatility, high performance and an excellent tyre life for your trailer

TYRE SIZE	PR	LOAD INDEX	SPEED SYMBOL				dB	
385/55 R22.5	20	160	K	✓	B	B	69	A
385/65 R22.5	22	164	K	✓	B	B	69	A



MIXED

ENDU™TRAX MA & MA HD (22.5)

ROBUST ALL-WHEEL TYRE FOR HIGH MILEAGE

The Endu™Trax MA& MA HD, specifically designed for mixed on- and off-road usage, is a robust all-wheel and trailer tyre with excellent grip and high uptime.



TYRE SIZE	PR	LOAD INDEX	SPEED SYMBOL				dB	
13 R22.5	18	156/150	K	✓	D	B	74	B
295/80 R22.5	16	154/149	K	✓	D	B	74	B
315/80 R22.5	18	156/150	K	✓	D	B	74	B
385/65 R22.5 HD	22	164	K	✓	C	B	74	B

Homologated by IVECO for its Way truck ranges. **IVECO**

ENDU™TRAX MD (22.5)

ROBUST DRIVE TYRE WITH EXCELLENT TRACTION

The Endu™Trax MD is specifically designed for mixed on- and off-road usage; a robust drive tyre with outstanding traction and high impact resistance.



TYRE SIZE	PR	LOAD INDEX	SPEED SYMBOL				dB	
13 R22.5	18	156/150	K	✓	D	B	74	B
295/80 R22.5	16	152/148	K	✓	E	B	74	B
315/80 R22.5	18	156/150	K	✓	E	B	74	B

Homologated by IVECO for its Way truck ranges. **IVECO**



COACH

ENDU™ COMFORT CA (22.5) PREMIUM PERFORMANCE WITH COMFORT AND SAFETY FOR YOUR COACH

The Endu™ Comfort CA made in Europe is designed for medium & long-distance transport for all-weather conditions with even wear providing excellent mileage and comfort.



TYRE SIZE	PR	LOAD INDEX	SPEED SYMBOL				dB	
295/80 R22.5	16	154/149	M	✓	C	B	69	A



URBAN

ENDU™CITY UA (22.5) EFFICIENCY, SAFETY AND TRACTION FOR BETTER URBAN MOBILITY

The Endu™City UA is designed to offer excellent mileage, guaranteed safety and high traction in all-weather conditions.



TYRE SIZE	PR	LOAD INDEX	SPEED SYMBOL				dB	
275/70 R22.5	16	148/145	J	✓	D	C	70	A



LONG HAUL

ENDU™ MILE LHT (22.5) PREMIUM PERFORMANCE WITH BEST-IN-CLASS FUEL EFFICIENCY AND EXTENDED MILEAGE

The Endu™ Mile LHT is a trailer tyre designed for long-distance transport providing excellent rolling resistance, mileage and durability to significantly improve your overall investment.



TYRE SIZE	PR	LOAD INDEX	SPEED SYMBOL				dB	
385/65 R22.5	22	160	K	A	C	69	A	



TECHNICAL DATA

Guidelines according to rim size and axle position

TYRE DESCRIPTION & MARKINGS											TYRE DIMENSIONS				
Usage segment	Size	Tyre Name	Tyre position	Load Index	Speed Symbol	Alter-native Load Index	Alter-native Speed Symbol	Ply Rating	M+S	3 PMSF	Overall Section Width (mm)	Overall Diameter (mm)	Static Loaded Radius (mm)	Rolling Circumference (mm)	Tread Depth (mm)
Regional	215/75 R17.5	EnduRace RA	All Wheel	126/124	M	-	-	14	✓	✓	210	769	360	2345	12,5
Regional	215/75 R17.5	EnduRace RD	Drive	126/124	M	-	-	14	✓	✓	210	769	360	2345	14,8
Regional	225/75 R17.5	EnduRace RA	All Wheel	129/127	M	-	-	14	✓	✓	228	783	366,15	2388,15	14
Regional	225/75 R17.5	EnduRace RD	Drive	129/127	M	-	-	14	✓	✓	228	785	367	2394	15,0
Regional	235/75 R17.5	EnduRace RA	All Wheel	132/130	M	-	-	14	✓	✓	238	803	375	2449	14,2
Regional	235/75 R17.5	EnduRace RD	Drive	132/130	M	-	-	14	✓	✓	238	803	375	2449	15,0
Regional	245/70 R17.5	EnduRace RA	All Wheel	136/134	M	-	-	14	✓	✓	248	791	365	2413	14,1
Regional	245/70 R17.5	EnduRace RD	Drive	136/134	M	-	-	14	✓	✓	247	793	366	2419	15,3
Regional	295/80 R22.5	EnduRace RA HD	All Wheel	154/149	M	-	-	16	✓	✓	300	1047	488	3193	15,6
Regional	295/80 R22.5	EnduRace RD	Drive	152/148	M	-	-	16	✓	✓	305	1060	493	3233	20,8
Regional	315/70 R22.5	EnduRace RA2	All Wheel	156/150	L	-	-	18	✓	✓	308	1008	466	3074	14,1
Regional	315/70 R22.5	EnduRace RD	Drive	154/150	L	152/148	M	18	✓	✓	309	1021	471	3114	19,8
Regional	315/70 R22.5	EnduRace RD2	Drive	154/150	L	152/148	M	18	✓	✓	309	1016	469	3099	17
Regional	315/80 R22.5	EnduRace RA	All Wheel	156/150	L	154/150	M	18	✓	✓	311	1082	503	3300	16
Regional	315/80 R22.5	EnduRace RD2	Drive	156/150	L	154/150	M	18	✓	✓	314	1082	503	3300	17,8
Regional	385/55 R22.5	EnduRace R Front	Front	160	K	158	L	20	✓	✓	381	994	463	3012	14,2
Regional	385/65 R22.5	EnduRace R Front HD	Front	164	K	-	-	22	✓	✓	382	1068	494	3236	15,0
Regional	215/75 R17.5	EnduRace RT	Trailer	135/133	J	-	-	16	✓	✓	214	769	360	2345	13,1
Regional	235/75 R17.5	EnduRace RT	Trailer	143/141	J	144/144	F	16	✓	✓	237	800	373	2440	13,1
Regional	245/70 R17.5	EnduRace RT	Trailer	143/141	J	-	-	16	✓	✓	249	789	364	2406	13,1
Regional	385/55 R22.5	EnduRace RT	Trailer	160	K	158	L	20	✓	✗	380	993	463	3009	14,0
Regional	385/55 R 22.5	EnduRace RT2	Trailer	160	K	158	L	20	✓	✓	380	994	463	3012	14,1
Regional	385/65 R22.5	EnduRace RT2	Trailer	164	K	-	-	22	✓	✓	382	1068	494	3236	14,5
Mixed	295/80 R22.5	EnduTrax MA	All Wheel	154/149	K	-	-	16	✓	✓	298	1052	490	3209	17,8
Mixed	295/80 R22.5	EnduTrax MD	Drive	152/148	K	-	-	16	✓	✓	298	1057	492	3224	20,0
Mixed	315/80 R22.5	EnduTrax MA	All Wheel	156/150	K	154/150	L	18	✓	✓	314	1081	502	3297	16,7
Mixed	315/80 R22.5	EnduTrax MD	Drive	156/150	K	154/150	L	18	✓	✓	314	1094	508	3337	23,8
Mixed	385/65 R22.5	EnduTrax MA HD	All Wheel	164	K	-	-	22	✓	✓	384	1072	496	3248	17,3
Mixed	13 R22.5	EnduTrax MA	All Wheel	156/150	K	-	-	18	✓	✓	325	1120	519	3416	17,7
Mixed	13 R22.5	EnduTrax MD	Drive	156/150	K	-	-	18	✓	✓	325	1129	523	3443	21,7
Long Haul	385/65 R22.5	EnduMile LHT	Trailer	164	K	-	-	22	✓	✗	381	1063	492	3221	12,2
Coach	295/80 R22.5	EnduComfort CA	All Wheel	154/149	M	-	-	16	✓	✓	299	1047	488	3193	15,5
Urban	275/70 R22.5	EnduCity UA	All Wheel	148/145	J	-	-	16	✓	✓	272	961	445	2922	18,4

RIM DATA			LOAD CAPACITY PER AXLE (KG) @PRESSURE																		
Recommended RIM width (inch)	Alternative RIM width (inch)	Minimal Dual Spacing (mm)	Single /Dual Fitment	Bar	5.00	5.25	5.50	5.75	6.00	6.25	6.50	6.75	7.00	7.25	7.50	7.75	8.00	8.25	8.50	8.75	9.00
				Kpa	500	525	550	575	600	625	650	675	700	725	750	775	800	825	850	875	900
				Psi	73	76	80	83	87	91	94	98	102	105	109	112	116	120	123	127	131

6.00	6.75	239	S			2700	2800	2900	3000	3100	3200	3300	3400									
			D			5080	5270	5460	5650	5840	6030	6210	6400									
6.00	6.75	239	D			5080	5270	5460	5650	5840	6030	6210	6400									
6.75	6.00	254	S				2960	3070	3180	3280	3390	3490	3590	3700								
			D				5610	5810	6010	6210	6410	6610	6800	7000								
6.75	6.00	254	D				5610	5810	6010	6210	6410	6610	6800	7000								
6.75	7.50	262	S						3250	3360	3470	3580	3680	3790	3890	4000						
			D						6190	6390	6600	6800	7000	7200	7400	7600						
6.75	7.50	262	D						6190	6390	6600	6800	7000	7200	7400	7600						
7.50	6.75	279	S								3610	3720	3830	3940	4050	4160	4260	4370	4480			
			D								6840	7050	7260	7460	7670	7870	8070	8280	8480			
7.50	6.75	279	D								6840	7050	7260	7460	7670	7870	8070	8280	8480			

9.00	8.25	335	S								6060	6240	6420	6600	6780	6960	7140	7320	7500			
			D								10480	10800	11120	11440	11760	12080	12400	12680	13000			
9.00	8.25	335	D								10160	10470	10780	11090	11390	11700	12000	12300	12600			
9.00	9.75	351	S									6350	6540	6720	6910	7090	7280	7460	7640	7820	8000	
			D									10640	10950	11270	11580	11880	12190	12490	12800	13100	13400	
9.00	9.75	360	D									10640	10950	11270	11580	11880	12190	12490	12800	13100	13400	
9.00	9.75	360	D									10640	10950	11270	11580	11880	12190	12490	12800	13100	13400	
9.00	9.75	351	S								6450	6650	6840	7040	7230	7430	7620	7810	8000			
			D								10810	11140	11470	11790	12120	12440	12760	13080	13400			
9.00	9.75	351	D								10810	11140	11470	11790	12120	12440	12760	13080	13400			
12.25	11.75	-	S									7150	7360	7570	7770	7980	8190	8390	8590	8790	9000	
11.75	12.25	-	S									7940	8170	8410	8640	8870	9100	9320	9550	9770	10000	

6.00	6.75	239	S								3520	3630	3730	3840	3940	4050	4150	4260	4360			
			D								6650	6850	7050	7260	7450	7650	7850	8050	8240			
6.75	7.50	262	S									4420	4550	4680	4810	4940	5070	5190	5320	5450		
			D									8360	8610	8860	9100	9340	9580	9820	10000	10300		
7.50	6.75	279	S									4420	4550	4680	4810	4940	5070	5190	5320	5450		
			D									8360	8610	8860	9100	9340	9580	9820	10060	10300		
12.25	11.75	-	S									7150	7360	7570	7770	7980	8190	8390	8590	8790	9000	
12.25	11.75	-	S									7150	7360	7570	7770	7980	8190	8390	8590	8790	9000	
11.75	12.25	-	S									7940	8170	8410	8640	8870	9100	9320	9550	9770	10000	

9.00	8.25	335	S								6050	6230	6420	6600	6780	6960	7140	7320	7500			
			D								10480	10810	11130	11440	11760	12070	12380	12690	13000			
9.00	8.25	335	D								10160	10470	10780	11090	11390	11700	12000	12300	12600			
9.00	9.75	351	S								6450	6650	6840	7040	7230	7430	7620	7810	8000			
			D								10810	11140	11470	11790	12120	12440	12760	13080	13400			
9.00	9.75	351	D								10810	11140	11470	11790	12120	12440	12760	13080	13400			
11.75	12.25	-	S									7940	8170	8410	8640	8870	9100	9320	9550	9770	10000	
9.75	9.00	360	S									6500	6690	6880	7070	7260	7440	7630	7810	8000		
			D									10880	11200	11520	11840	12160	12470	12780	13090	13400		
9.75	9.00	360	D									10880	11200	11520	11840	12160	12470	12780	13090	13400		
11.75	12.25	-	S									7940	8170	8410	8640	8870	9100	9320	9550	9770	10000	

9.00	8.25	335	S								6060	6240	6420	6600	6780	6960	7140	7320	7500			
			D								10480	10800	11120	11440	11760	12080	12400	12680	13000			

8.25	7.50	311	S									5000	5150	5300	5440	5590	5730	5880	6020	6160	6300	
------	------	-----	---	--	--	--	--	--	--	--	--	------	------	------	------	------	------	------	------	------	------	--

LOAD TABLE

Conversion of load indexes (LI) into load capacities per tyre (kg and lbs)

LI	KG	LBS
80	450	990
81	462	1020
82	475	1045
83	487	1075
84	500	1100
85	515	1135
86	530	1170
87	545	1200
88	560	1235
89	580	1280
90	600	1325
91	615	1355
92	630	1390
93	650	1435
94	670	1475
95	690	1520
96	710	1565
97	730	1610
98	750	1655
99	775	1710
100	800	1765
101	825	1820
102	850	1875
103	875	1930
104	900	1965
105	925	2040
106	950	2095
107	975	2150
108	1000	2205
109	1030	2270
110	1060	2335
111	1090	2405
112	1120	2470
113	1150	2535
114	1180	2600
115	1215	2680
116	1250	2755
117	1285	2835
118	1320	2910
119	1360	3000
120	1400	3085
121	1450	3195
122	1500	3305
123	1550	3415
124	1600	3525
125	1650	3640

LI	KG	LBS
126	1700	3750
127	1750	3860
128	1800	3970
129	1850	4080
130	1900	4190
131	1950	300
132	2000	4410
133	2060	4540
134	2120	4675
135	2180	4805
136	2240	4940
137	2300	5070
138	2360	5205
139	2430	5355
140	2500	5510
141	2575	5675
142	2650	5840
143	2725	6010
144	2800	6175
145	2900	6395
146	3000	6615
147	3075	6780
148	3150	6945
149	3250	7165
150	3350	7385
151	3450	7605
152	3550	7825
153	3650	8045
154	3750	8265
155	3875	8545
156	4000	8820
157	4125	9095
158	4250	9370
159	4375	9645
160	4500	9920
161	4625	10195
162	4750	10470
163	4875	10745
164	5000	11025
165	5150	11355
166	5300	11685
167	5450	12015
168	5600	12345
169	5800	12785
170	6000	13230

SPEED TABLE

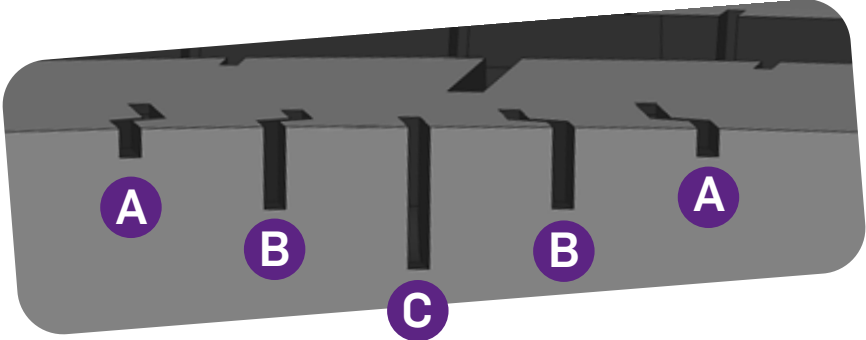
Speed symbols (km/h and mph)

SYMBOL	E	F	G	J	K	L	M	N	P	Q	R	S	T
km/h	70	80	90	100	110	120	130	140	150	160	170	180	190
mph	43	50	56	62	68	75	81	87	93	99	106	112	118



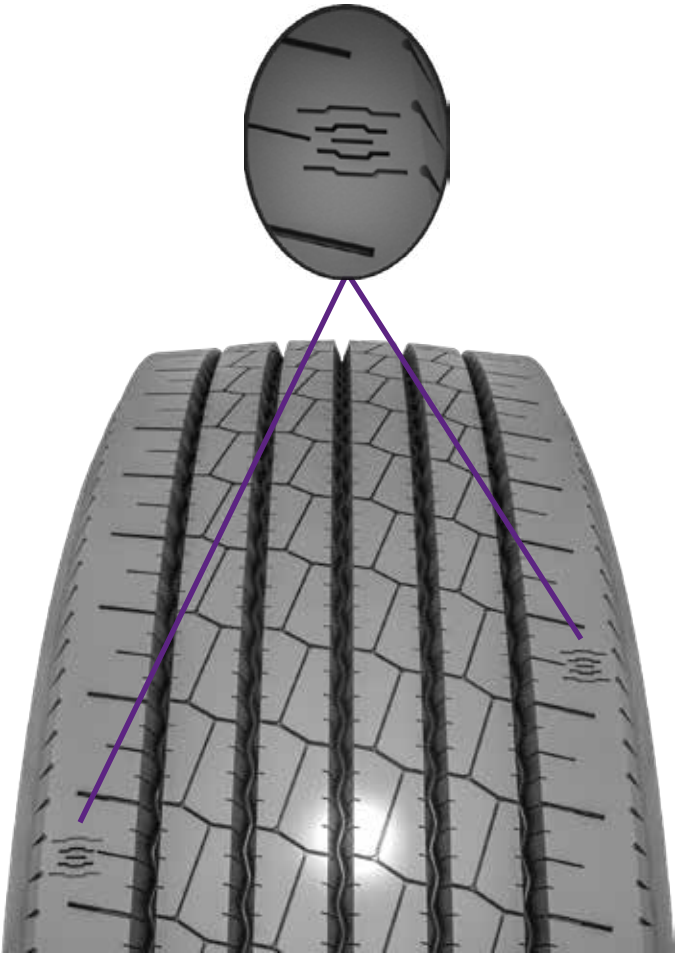
MIS-ALIGNMENT INDICATOR (MAI)

MAI - Mis-alignment Indicator is represented on the circumference of tyre on the shoulder ribs, which helps in identifying uneven tread wear caused due to imperfect alignments that may lead to reduced mileage, casing damage & increase in consumption of fuel.



Indicator	A	B	C
% of NSD	5%	15%	25%

** Available on all 22.5" regional steer axle position tyre*



EXAMPLES OF TYRE WEAR DUE TO MISALIGNMENT & HOW MAI HELPS IN DETECTING THE UNEVEN WEAR

IDEAL WHEEL ALIGNMENT - Optimum Wheel Alignment will have even wear on both sides



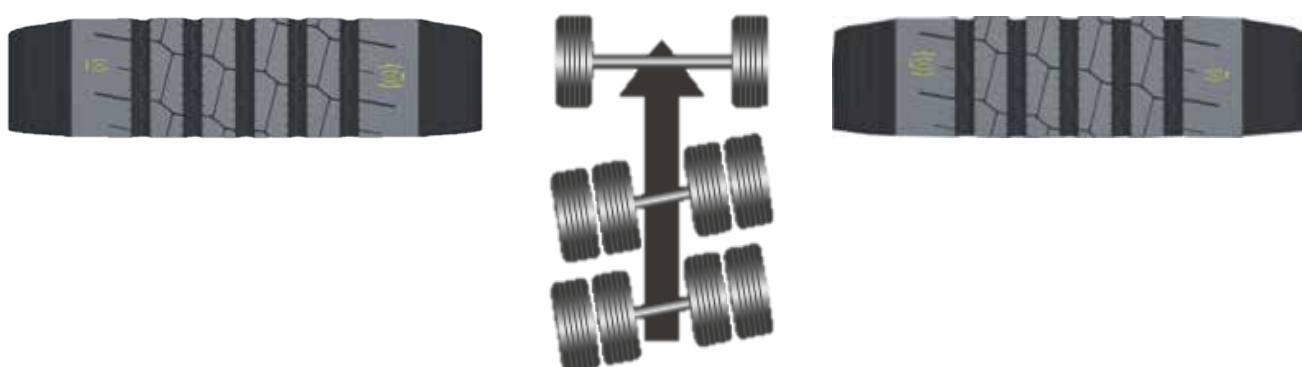
TOE IN - Outer side of the tyre wears more when tyres are pointed inwards



TOE OUT - Inner side of the tyre wears more when tyres are pointed Outwards



DRIFT - Counter-steering due to non parallel axles resulting in one sided higher wear



REGROOVING

REGROOVING GUIDELINES

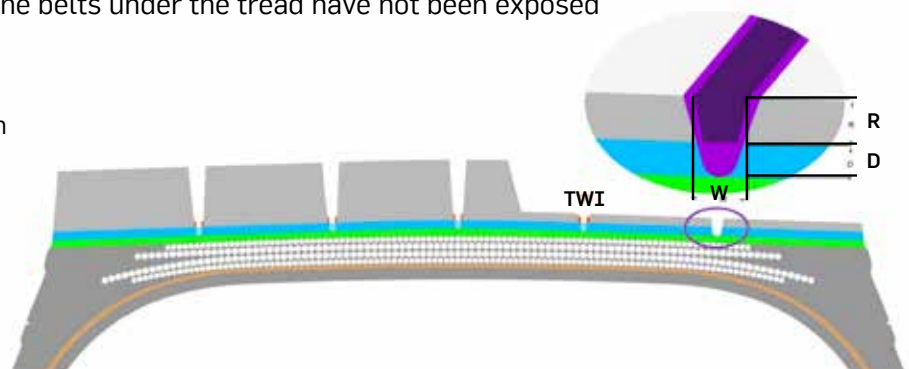
Subject to usage conditions and regular tyre maintenance, Apollo's highly durable casings can provide multiple tyre lives. Regrooving and retreading ensures longer serviceability of tyres, and helps Apollo Tyres customers to lower their operating costs.

- Regrooving is done on either new or retreaded tyre on which the tread pattern has been renewed by cutting into the tread deeper than the original moulded groove depth
- The regrooving of truck tyres should be entrusted solely to fully trained operators
- Only genuine certified regrooving tools with electrically heated blades should be used
- A minimum depth of 3mm remaining undertread rubber is essential to avoid damage at the top breaker belt
- Particular care should be taken while selecting tyres for regrooving and if heavily damaged in the tread area, the tyres should be retreaded instead of regrooved
- Under no circumstances should a tyre be regrooved if it is not marked as "regroovable" on the sidewall area by the tyre manufacturer

REGROOVING

- It is strongly recommended to maintain a minimum remaining tread depth of 3mm before regrooving
- Measure the remaining groove depth at the lowest point of tread depth
- Ensure that you regroove your Apollo truck and bus radial tyres to the patterns, depths and widths recommended in Apollo tyres truck & bus technical data book
- After regrooving, check that your tyre is free from defects. It is very important to ensure that the belts under the tread have not been exposed

- R:** Remaining Tread Depth
- D:** Nominal re-grooving Depth
- W:** Regrooving Width
- TWI:** Tread Wear Indicator

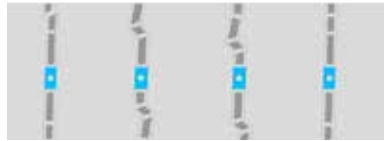




Endu[™]Race RA on 17.5" rims



New tyre tread



80% worn



Regrooved tyre

Maximum regrooving depth 3 mm and regrooving width 7-8 mm

Endu[™]Race RD on 17.5" rims



New tyre tread



80% worn



Regrooved tyre

Maximum regrooving depth 3 mm and regrooving width 7-8 mm

Endu[™]Race RA & RA_{HD} on 22.5" rims



New tyre tread



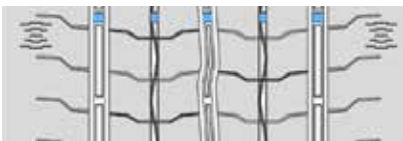
80% worn



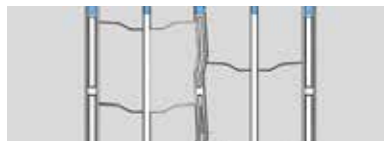
Regrooved tyre

Maximum regrooving depth 3 mm and regrooving width 8-10 mm

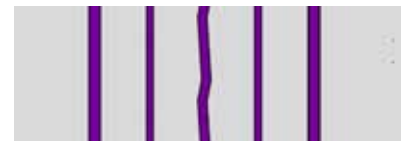
Endu[™]Race RA₂ on 22.5" rims



New tyre tread



80% worn



Regrooved tyre

Maximum regrooving depth 3 mm and regrooving width 8-10 mm

Endu[™]Race RD on 22.5" rims



New tyre tread



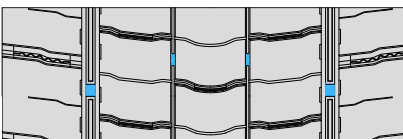
80% worn



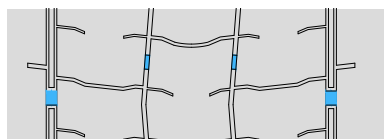
Regrooved tyre

Maximum regrooving depth 3 mm and regrooving width 8-10 mm

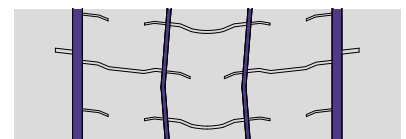
Endu[™]Race RD₂



New tyre tread



80% worn



Regrooved tyre

Maximum regrooving depth 3 mm and regrooving width 8-10 mm

Endu[™]Race R front & front_{HD}



New tyre tread



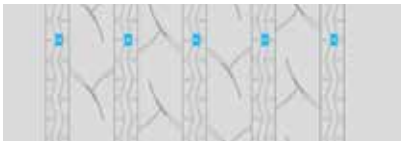
80% worn



Regrooved tyre

Maximum regrooving depth 3 mm and regrooving width 8-10 mm

-Endu™ Race RT



New tyre tread



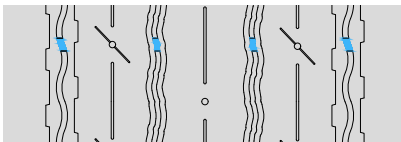
80% worn

Maximum regrooving depth 3 mm and regrooving width 8-10 mm

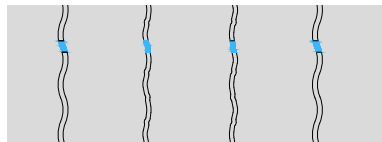


Regrooved tyre

-Endu™ Race RT₂

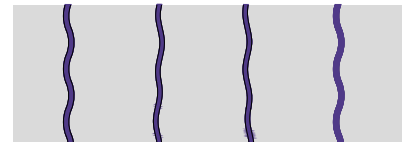


New tyre tread



80% worn

Maximum regrooving depth 3 mm and regrooving width 8-10 mm



Regrooved tyre

-Endu™ Trax MA & MA_{HD}



New tyre tread



80% worn

Maximum regrooving depth 3 mm and regrooving width 8-10 mm



Regrooved tyre

-Endu™ Trax MD



New tyre tread



80% worn

Maximum regrooving depth 3 mm and regrooving width 8-10 mm



Regrooved tyre

-Endu™ Mile LHT



New tyre tread



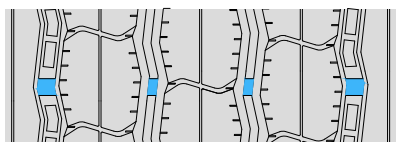
80% worn

Maximum regrooving depth 3 mm and regrooving width 8-10 mm

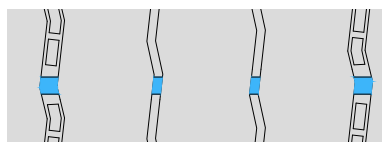


Regrooved tyre

-Endu™ Comfort CA

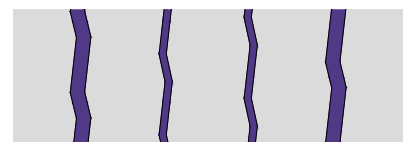


New tyre tread



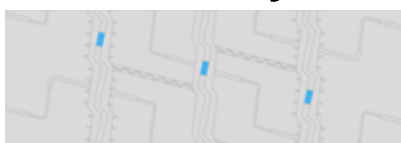
80% worn

Maximum regrooving depth 3 mm and regrooving width 8-10 mm

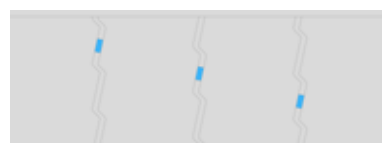


Regrooved tyre

-Endu™ City UA



New tyre tread



80% worn

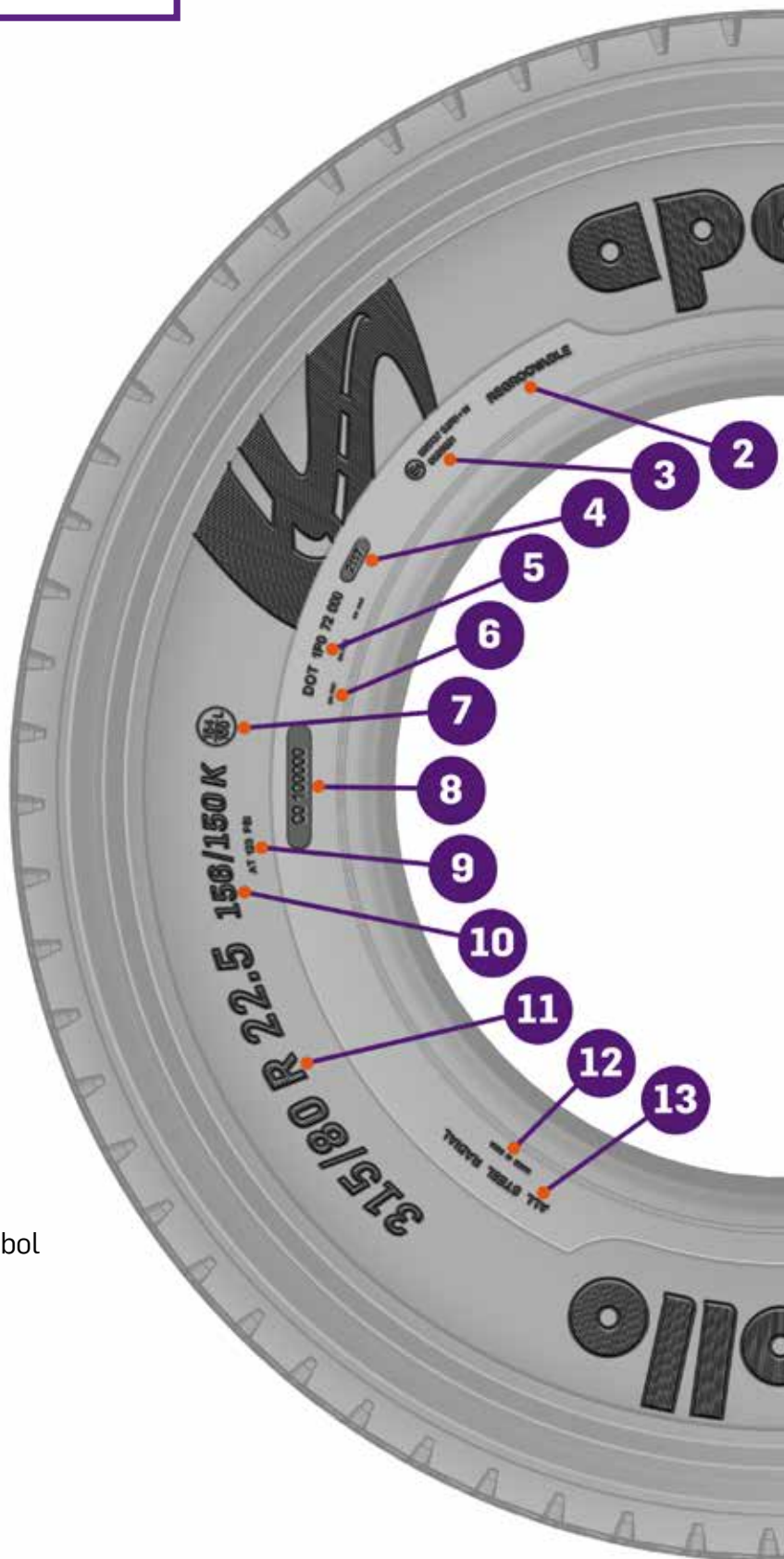
Maximum regrooving depth 3 mm and regrooving width 8-10 mm

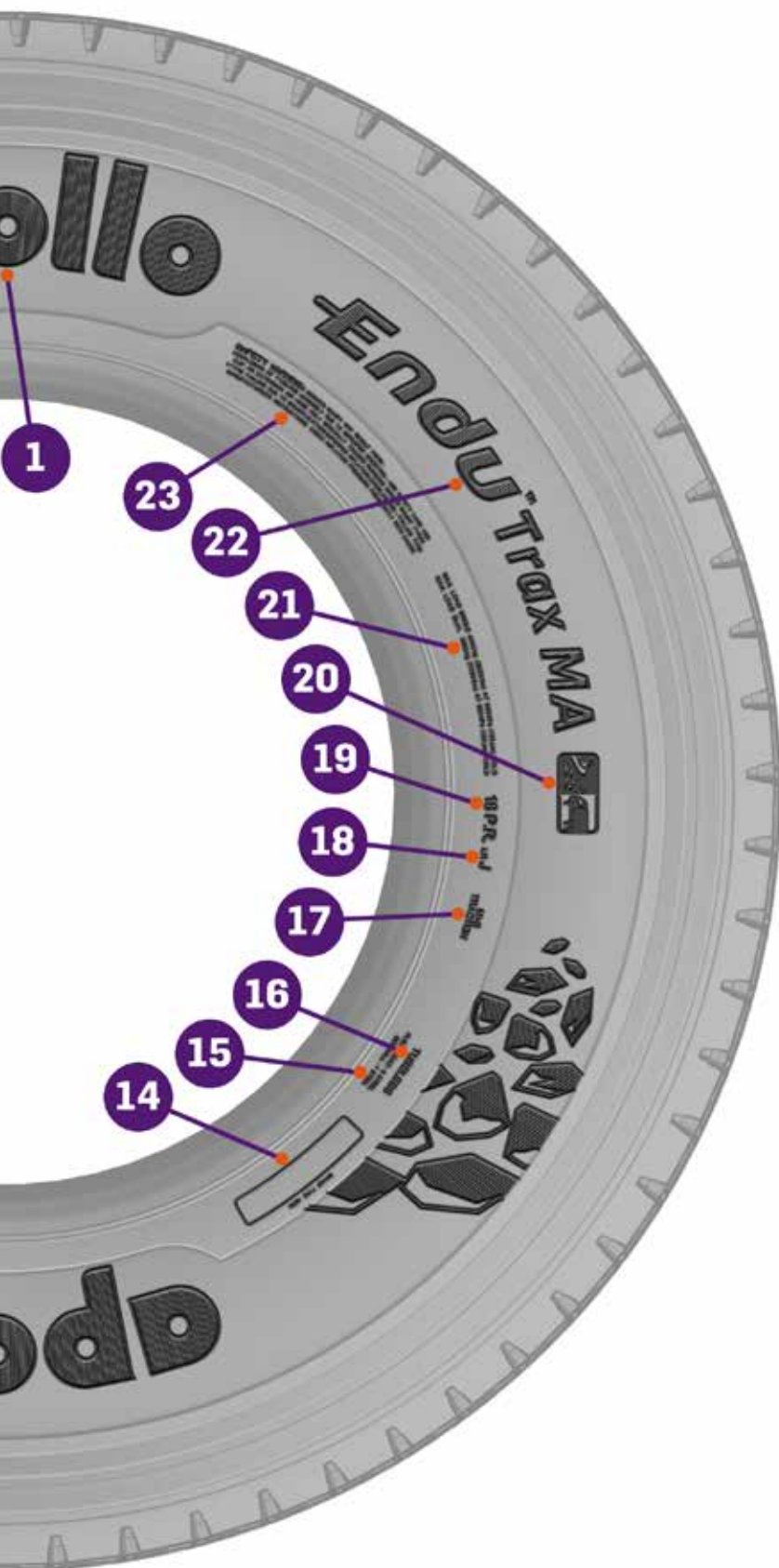


Regrooved tyre

SIDEWALL MARKINGS

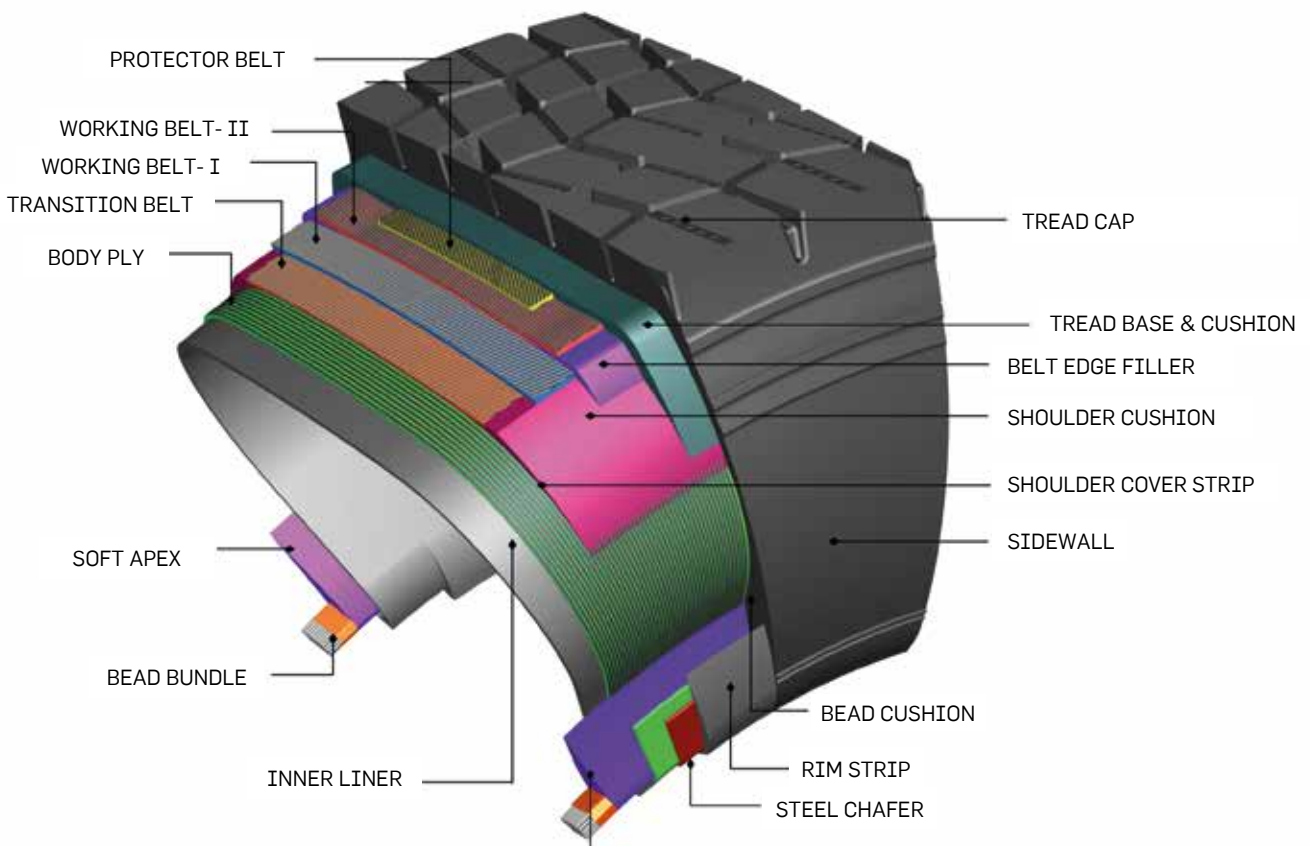
1. Manufacturer's name
2. Regroovable
3. Ece marking
4. Week and year code
5. Dot marking
6. Mould reference number
7. Supplementary service description
8. Serial number
9. Test inflation pressure
10. Nominal load index and speed symbol
11. Size marking
12. Country of origin
13. All steel radial





- 14. Provision for hot branding
- 15. Construction details
- 16. Tubeless
- 17. M+S / 3PMSF marking
- 18. Load range
- 19. Ply rating
- 20. Recommended segment and axle position
- 21. Load and speed details
- 22. Product name
- 23. Safety warning

TYRE CONSTRUCTION AND DIMENSIONS



Tread:

Tread comes in direct contact with the road and provides traction required to manoeuvre the vehicle. The design of the tread varies with the application type and axle position in the vehicle. The tread base helps in minimising the temperature.

Belts:

Steel belts stabilise the tread, minimise distortion of the tyre surface contacting the ground and provide puncture resistance. Steel belts restrict case growing during use and increase the tyre's structural strength.

Body ply:

These plies give the tyre its structural strength, ability to contain air pressure, its deflection characteristics and provides sidewall impact resistance. They transmit all load, driving, braking and steering forces between the wheel and tyre tread.

Belt edge filler:

Rubber skim is placed at the ends of working belts. This aims to reduce the shear forces acting on the belt ends during the tyre use.

Shoulder cushion:

Shoulder cushions are contoured rubber strips placed on the body ply under the belt ends. They help provide belt contouring and insulate the body ply from belt edges.

Sidewall:

The sidewall flexing enables ride comfort and lateral stability. The surface of the sidewall is engraved with all information relating to the loading and speed capacity, inflation pressure, and brand/product name.

Bead bundle:

Bead bundles are continuous rubber-coated high tensile wires wound to form a high-strength unit to the specific diameter that fits the inflated tyre perfectly on a wheel rim. They are the anchor that maintains the carcass seated on the rim, and resists the pull force of carcass cords tensioned by inflation pressure.

Inner liner:

This is made from a compound with very low permeability. It prevents the diffusion of air and moisture through the tyre structure.

Rim strip:

This is the rubber layer between body ply and wheel rim. It is in direct contact with the wheel rim and is designed to undergo the rigour of mounting and demounting.

Apex:

The apex is a rubber profile placed above the bead bundle, which provides a smooth transition from the stiff bead area to the flexible sidewall.

Chafer:

The chafer is a strip of wire placed around the body ply cord in the bead area. Its purpose is to protect the bead area from damage during mounting/demounting and reduce the effects of chafing between the wheel and tyre bead.

TYRE DIMENSIONS

1. Section width

The linear distance between the outside of the sidewalls of an inflated tyre, excluding the elevations due to labelling, decorations and protective bands or ribs

2. Tread width

The linear distance between the edges of the tread design area of an inflated tyre

3. Section height

The distance from the bed seat to the outer tread design area of an inflated tyre

4. Loaded section width

The width of the loaded cross section

5. Overall diameter

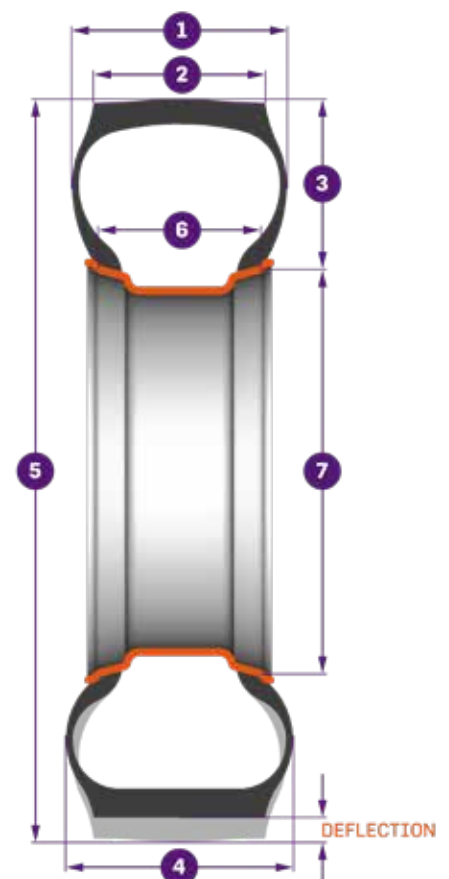
The diameter of an inflated tyre at the outermost surface of the tread

6. Rim width

The width of the rim measured from flange to flange

7. Nominal rim diameter

The diameter of the rim measured from seat to seat



EUROPEAN TYRE LABELLING

As part of the European Energy Initiative and in alignment with Regulation 2020/740, the Tyre Label gives an insight into the characteristics and performance of the tyre in five aspects. The label includes a QR code, linking to a –by the European Union approved and regulated– website, validating the data shown on the label.

By ensuring that your tyres are at the right pressure and regularly checking for optimum fuel efficiency and maximum wet grip, you can have a major influence on fuel savings and road



ROLLING RESISTANCE / FUEL EFFICIENCY

Lower Rolling Resistance saves fuel. The values A to E indicate the effect on fuel consumption from low to high.



GRIP ON WET ROADS / BRAKING PERFORMANCE

In the category 'Grip on a wet road surface', the classification A to E indicates the relative braking distance from short to long on a wet road surface.



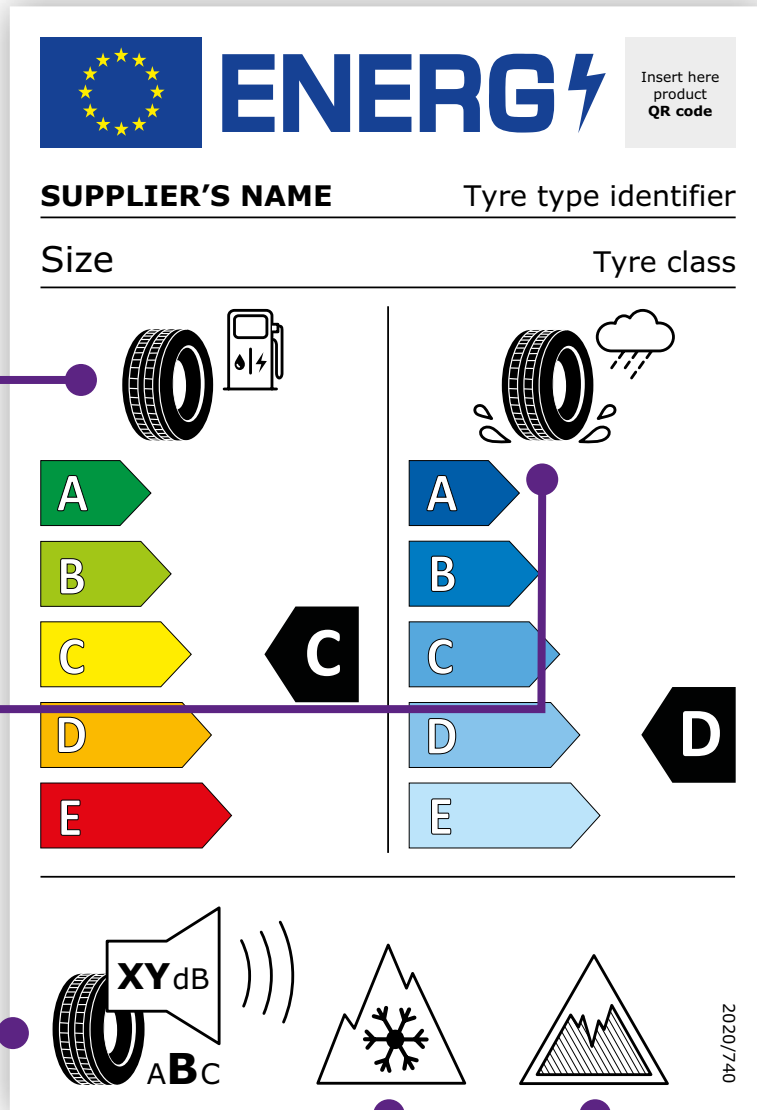
EXTERIOR NOISE LEVEL

The exterior Noise level is measured in dB, divided into three classes, ranging from A to C, whereas A stands for low-Noise and C for high Noise pollution for the environment.

NB: External Noise does not fully correlate with the interior noise of the vehicle.

- A** Tyre with a low exterior noise level. The rolling noise emission of this tyre is at least 3 dB below the European Regulation.
- B** Tyre with an average exterior noise level. The rolling noise emission of the tyre falls within the new limit, and represents the European Regulation.
- C** Tyre with a high exterior noise level. This no longer meets the European Regulation.

safety. An efficient driving style also has a significant effect on the fuel consumption while making sure that you have sufficient braking distance can be crucial. It is also worth remembering that the three label criteria, although important, are not the only performance parameters.



SNOW GRIP
 If applicable, the 'Three Peak Mountain Snowflake' symbol (also referred to as 3PMSF) indicates that the product has been classified as a tyre for the use in severe snow conditions in accordance with strict European legislations.

ICE GRIP
 The tyre label of a tyre which satisfies the minimum Ice Grip performance standards shall show the Ice Grip pictogram.

APOLLOTYRES.COM



apollo
TYRES

GO THE ————— DISTANCE