

NORTH AMERICAN

MOTO CATALOG

VOL. 23



MAXXIS



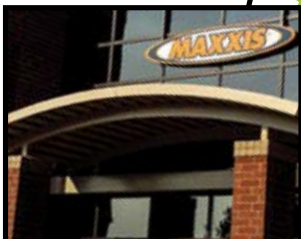
Maxxis International - USA
545 Old Peachtree Road / Suwanee, GA 30024, USA
Tel: 1.800.4.MAXXIS / Tel: 1.770.962.5932
Fax: 1.770.962.7705



Maxxis International
Research and Development
Center



Maxxis International - HQ
215 Meei-Kong Rd. / Ta-Tsun, Chang-Hwa /
Taiwan
Tel: 886.4.852.5151 / Fax: 886.4.852.6468



Maxxis Technology Center - USA
480 Old Peachtree Road / Suwanee, GA
30024, USA
Tel: 1.678.376.4420 / Fax: 1.770.822.4361



MAXXIS CORPORATE
MAXXIS DISTRIBUTION

At Maxxis we strive to provide the highest quality products and customer service with the goal of creating lifelong Maxxis customers. Anchored by a strong commitment to our values, we form close partnerships with our stakeholders, and together we work to consistently exceed our customers' expectations.

From design to production, from the factory floor to your favorite road or trail, Maxxis products lead the way in technological advances. For bicycle, automotive, light truck, ATV, motorcycle, kart, trailer and lawn & garden, Maxxis

provides the quality customers have come to depend on.

Total customer satisfaction has been Maxxis' guiding purpose since 1967. Working toward this goal has built Maxxis into the successful worldwide company it is today. Champions around the world choose Maxxis because they know that our extensive product research, unique designs and rigorous testing standards produce tires that will elevate riders to the next level.

For more information on the entire Maxxis product line, visit us at maxxis.com.

SAFETY	4
TERRAIN GUIDE	5
MOTORCYCLE OFF-ROAD	6
Maxxcross MX-SM M7328 Rear	7
Maxxcross MX-SI M7334 F/R	8
Maxxcross MX-IH M7333 F/R	8
Maxxcross MX-ST+ M7332 F/R	9
Maxxcross SI M7311/M7312	10
Maxxcross IT M7304/M7305	11
Maxxcross Desert IT M7304D/M7305D	13
DTR-1 M7302 Front	13
REFERENCE GUIDES	14-15
Quick Guide	14
Fitment Guide	15



Maxxis makes every effort to ensure the accuracy of the information we publish. Maxxis is not responsible for errors or misprints in our materials. Specifications and item availability are subject to change without notice. Actual weights and measurements may vary from those published herein. Weights are listed in grams.
©2023 Maxxis International. All Rights Reserved.

SAFETY

- Consult your owner's manual for specific tire information.
- Clearance around tires must be maintained. Check with the motorcycle manufacturer before attempting to mount tire sizes which differ from those stated in the owner's manual. Altering the tire size may require a different rim size. For this reason, we suggest you consult your dealer to be sure the rim size is compatible before making any changes to the tire size on your vehicle. Be sure adequate clearance is maintained at all times.
- When replacing tube-type tires, be sure to replace the inner tubes. Stretched inner tubes can crease and fail due to thinning of the inner tube rubber. Make sure inner tube size matches the tire size. Consult your motorcycle dealer for correct rim band replacement.
- The air pressure inside the tire is critical to its handling characteristics and load capability. Check cold tire pressure with an accurate tire pressure gauge before every ride. Tire pressure should not be adjusted immediately after a tire has been in use.
- Follow tire pressure guidelines located in your vehicle's owner's manual. Never exceed maximum inflation pressure indicated on your tire's sidewall.
- Check valve cores. Tighten for correct seating. If valve cores are damaged, replace them.
- Check tires for damage before and after riding. Punctured, cracked, bulging or blistered tires should be replaced immediately. If not replaced, damage can result, including sudden and complete tire failure.
- After replacing worn tires, take time to become acquainted with the handling and performance of your new tires. Check inflation pressure frequently and adjust if needed.
- Tire mounting and dismounting should be handled by professionals. Improper mounting or incorrectly mounted tires can lead to injury or death and/or damage to the tire, wheel and/or vehicle.
- Tire and wheel assemblies should be balanced before use and each time the tire is removed or replaced. Failure to do so will result in accelerated tread wear.
- Check for broken or damaged spokes and replace as necessary.
- Tires marked as front or rear tires should only be used in their designated position.
- Do not retread, regroove, sipe or otherwise modify tires.
- Do not use dry or liquid balancers. Do not use liquid sealants.
- Do not store tires in direct sunlight for extended periods of time. Store unmounted tires indoors at temperatures above 32°F.
- Allowing tires to stand in oil or gasoline may have an adverse affect on the rubber compounds of the tire.
- Do not mix radial and bias construction tires unless specifically recommended by the manufacturer as the original equipment of the vehicle.
- Never chemically treat tires (i.e. "soaking" or using tire softener in an attempt to alter tire compound).
- Never operate a vehicle beyond the speed rating denoted on the sidewall of the tires. Do not exceed the load rating denoted on the tire sidewall. These situations can cause tire damage, possibly resulting in catastrophic tire failure.
- Wheel alignment is critical to tread life and tire safety. Replace bent or damaged rims or wheels immediately.
- Failure to follow these guidelines can result in accelerated tread wear and may cause catastrophic tire failure. This may result in accident, injury or death.





TERRAIN GUIDE

MOTORCYCLE OFF-ROAD					
MODEL	SAND/ MUD	SOFT	INTER- MEDIATE	HARD	OFF- ROAD/ TRAIL
MAXXCROSS MX SM					
MAXXCROSS MX SI					
MAXXCROSS MX IH					
MAXXCROSS MX-ST+					
MAXXCROSS SI					
MAXXCROSS IT					
MAXXCROSS DESERT IT					
DTR-1					







MAXXCROSS MX-SM

TIRE SIZE	LOAD/SPEED RATING	OVERALL DIAMETER (INCH)	OVERALL WIDTH (INCH)	RIM SIZE (INCH)	TREAD DEPTH (INCH)
M7328 Rear					
100/90-19	57	26.8	4.8	2.15x19	23/32
110/90-19	62	27.5	5.1	2.15x19	23/32

- ✗ **CHAMPIONSHIP WINNING SAND AND MUD TIRE**
- ✗ **REINFORCED SIDEWALLS OFFER A COMFORTABLE RIDE**
- ✗ **MADE WITH HYDROPHOBIC RUBBER TO REPEL WATER AND MUD**

Designed for use in soft terrain, the MX-SM is a go to tire in both AMA Motocross and MXGP. Leave your competition stuck in the mud with the MX-SM. Extra-rigid scoop design and sharp block edges deliver extreme grip, while raised half-shoulder knobs grip terrain through sharp corners providing just the right blend of confidence and traction.



MAXXCROSS MX SI

TIRE SIZE	LOAD/SPEED RATING	OVERALL DIAMETER (INCH)	OVERALL WIDTH (INCH)	RIM SIZE (INCH)	TREAD DEPTH (INCH)
7334 Front					
70/100-17	40	22.9	3.3	1.60X17	14/32
80/100-21	51	27.8	3.7	1.85X21	16/32
7334 Rear					
90/100-14	49	21.7	4.3	2.15X14	18/32
110/100-18	64	27.2	5.2	2.50X18	21/32
110/90-19	62	27.3	5.2	2.50X19	21/32
120/80-19	63	27.2	5.4	2.75X19	21/32

- ✗ **SUPERIOR TRACTION FOR CONSISTENCY IN ROUGH CONDITIONS ALLOWS THE RIDER TO FEEL CONFIDENT IN ANY SOFT-TO-INTERMEDIATE SCENARIO**
- ✗ **REDESIGNED TREAD PATTERN AND COMPOUNDING PROVIDE EXCELLENT TRACTION ON CORNER EXITS, PUTTING THE BIKE'S POWER TO THE GROUND IN SOFTER TERRAIN**
- ✗ **NEW TREAD PATTERN AND CARCASS ON FRONT TIRE OFFER EXCELLENT LEAN ANGLE GRIP, PREDICTABILITY AND STABILITY**

Delivering improved performance in soft-to-intermediate motocross conditions, the Maxxcross MX-SI is the latest model from the Maxxis MX line. Designed and tested in cooperation with 7X Supercross champion Jeremy McGrath, the all-new MX-SI gives motocross riders and racers an edge with superior traction in a wide range of conditions.



MAXXCROSS MX IH

TIRE SIZE	LOAD/SPEED RATING	OVERALL DIAMETER (INCH)	OVERALL WIDTH (INCH)	RIM SIZE (INCH)	TREAD DEPTH (INCH)
7333 Front					
70/100-19	42	24.8	3.2	1.60X19	14/32
80/100-21	51	27.8	3.7	1.85X21	16/32
7333 Rear					
90/100-16	51	23.6	4.3	2.15X16	18/32
110/100-18	64	27.4	5.3	2.50X18	21/32
120/90-18	65	26.9	4.8	2.75X18	20/32
110/90-19	62	27.4	5.2	2.50X19	21/32
120/80-19	63	27.1	5.4	2.75X19	21/32
120/90-19	66	27.5	5.4	2.75X19	21/32

- ✗ **THE ALL-NEW MX-IH IS DESIGNED TO PERFORM ON INTERMEDIATE AND HARD TERRAIN FOR EVERYONE FROM WEEKEND WARRIORS TO PROFESSIONAL RACERS**
- ✗ **IMPROVED CONSTRUCTION PROVIDES A CONSISTENT, COMPLIANT FEEL UNDER CORNERING, ACCELERATION AND BRAKING, GIVING RACERS THE CONFIDENCE TO CHARGE INTO ANY CORNER**
- ✗ **TREAD COMPOUND AND PATTERN DESIGNED TO PROVIDE EXTREME PREDICTABILITY IN STRAIGHT-LINE ACCELERATION AND BRAKING ZONES**

Designed and tested for intermediate-to-hard terrain in cooperation with 7X Supercross champion Jeremy McGrath, the Maxxcross MX-IH is the newest, most advanced tire in our MX lineup. The MX-IH's new tread pattern, compound and tire composition provide the stability, predictability and traction needed for the demands of harder terrain pro motocross and supercross racing.



MAXXCROSS MX-ST+

TIRE SIZE	LOAD/SPEED RATING	OVERALL DIAMETER (INCH)	OVERALL WIDTH (INCH)	RIM SIZE (INCH)	TREAD DEPTH (INCH)
MX-ST+ Front (M7332F)					
80/100-21	51M	27.8	3.7	1.60X21	16/32
70/100-19	42M	24.9	3.2	1.60X19	14/32
70/100-17	40M	22.9	3.2	1.60X17	14/32
60/100-14	30M	19.0	2.8	1.40X14	12/32
60/100-12	36J	17.0	2.8	1.40X12	12/32
60/100-10	33J	15.0	2.8	1.50X10	11/32
MX-ST+ Rear (M7332R)					
120/80-19	63M	27.1	5.3	2.75X19	21/32
110/90-19	62M	27.4	5.2	2.15X19	21/32
100/90-19	57M	26.7	4.8	2.50X19	21/32
120/100-18	68M	27.4	5.6	2.75X18	21/32
110/100-18	64M	27.4	5.2	2.50X18	21/32
90/100-16	51M	23.7	4.3	2.15X16	18/32
90/100-14	49M	21.7	4.3	2.15X14	18/32
80/100-12	41M	18.5	3.7	1.85X12	16/32
80/100-10	46J	16.6	3.7	1.85X10	12/32
70/100-10	38J	15.5	3.0	1.50X10	11/32

- ✗ TREAD PATTERN DESIGNED TO OPTIMIZE TRACTION WHILE INSPIRING CONFIDENCE AND PREDICTABILITY IN INTERMEDIATE TO SOFT SOIL CONDITIONS
- ✗ RACING-SPECIFIC COMPOUNDS DELIVER EXCELLENT TRACTION AND STABILITY
- ✗ LIGHTWEIGHT, PLIABLE CARCASS DESIGN IMPROVES BRAKING PERFORMANCE, RIDE COMFORT, AND IMPACT ABSORPTION

Designed and tested in cooperation with 7X Supercross champion Jeremy McGrath, the all-new Maxxcross MX-ST+ is ridden at the highest levels of motocross and supercross racing. A new tread pattern, compound, and tire composition provide the stability, predictability, and traction demanded at the top tiers of motocross.



MAXXCROSS SI

TIRE SIZE	LOAD/SPEED RATING	OVERALL DIAMETER (INCH)	OVERALL WIDTH (INCH)	RIM SIZE (INCH)	TREAD DEPTH (INCH)
M7311 Front					
2.50-10	33J TT	15.4	3.0	1.50X10	12/32
60/100-14	30M TT	19.1	2.9	1.40X14	12/32
70/100-17	40M TT	23.0	3.3	1.40X17	14/32
70/100-19	42M TT	24.9	3.3	1.40X19	23/32
80/100-21	51M TT	27.9	3.8	1.60X21	15/32
90/100-21	57M TT	28.1	3.9	1.85X21	15/32
M7312 Rear					
2.75-10	38J TT	15.5	3.0	1.50X10	11/32
80/100-12	41M TT	18.4	3.7	1.60X12	15/32
90/100-14	49M TT	21.4	4.1	1.60X14	17/32
90/100-16	52M TT	23.5	4.3	1.60X16	16/32
100/100-18	59M TT	26.4	4.7	1.85X18	21/32
110/100-18	64M TT	27.0	5.0	2.15X18	21/32
120/100-18	68M TT	27.4	5.4	2.50X18	21/32
100/90-19	57M TT	26.8	4.7	1.85X19	21/32
110/90-19	62M TT	27.2	5.0	2.15X19	21/32
120/80-19	63M TT	27.3	5.1	2.50X19	21/32
120/90-19	66M TT	28.0	5.3	2.15X19	21/32



- ✗ **RACE-PROVEN RUBBER COMPOUND DELIVERS EXCELLENT TRACTION IN SOFT/ INTERMEDIATE CONDITIONS**
- ✗ **ANTI-FLEX KNOB BRIDGES ON SIDE LUGS OFFER SOLID STRAIGHT-LINE STABILITY AND ENHANCE GRIP FOR AGGRESSIVE CORNERING**
- ✗ **PERFECT TIRE FOR ANY INTERMEDIATE, LOAMY, OR MUDDY TERRAIN**

Developed and tested for performance and durability in the ultra-demanding conditions of GNCC racing, the Maxx-cross SI's race-proven compound delivers excellent traction in soft/intermediate conditions. Its anti-flex knob bridges on side lugs offer solid straight-line stability, and the Maxx-cross SI also features enhanced grip to allow for aggressive cornering.



MAXXCROSS IT

TIRE SIZE	LOAD/SPEED RATING	OVERALL DIAMETER (INCH)	OVERALL WIDTH (INCH)	RIM SIZE (INCH)	TREAD DEPTH (INCH)
M7304 Front					
2.50-10	33J TT	15.7	3.0	1.50X10	11/32
2.50-12	42J TT	17.1	2.7	1.50X12	9/32
60/100-14	30M TT	19.4	3.1	1.40X14	12/32
70/100-17	40M TT	22.9	3.3	1.40X17	14/32
70/100-19	42MM TT	25.0	3.3	1.40X19	13/32
80/100-21	51M TT	27.8	3.6	1.60X21	14/32
90/100-21	57M TT	28.1	3.9	1.85X21	15/32
M7305 Rear					
2.75-10	38J TT	15.5	3.0	1.50X10	11/32
80/100-12	50M TT	18.3	3.7	1.60X12	16/32
90/100-14	49M TT	21.4	4.1	1.60X14	17/32
90/100-16	51M TT	23.5	4.3	1.85X16	17/32
100/100-17	58M TT	24.8	4.3	1.85X17	18/32
100/100-18	59M TT	26.5	4.7	1.85X18	23/32
110/100-18	64M TT	27.0	5.0	2.15X18	23/32
120/100-18	68M TT	27.5	5.3	2.50X18	23/32
100/90-19	57M TT	26.9	4.7	1.85X19	21/32
110/90-19	62M TT	27.2	5.0	2.15X19	21/32
120/90-19	66M TT	28.1	5.3	2.15X19	23/32



- ✗ **Knob design offers precise steering for a wide variety of soil conditions**
- ✗ **Known as a very long-wearing intermediate tire**
- ✗ **Performs exceptionally well in common intermediate to hard-pack conditions**

The Maxxcross IT is the choice of many of the world's top cross country racers. Featuring knobs designed for superb handling and long wear, the Maxxcross IT also offers a rubber compound that enhances stability and increases grip in the wide range of soil conditions found on any off-road loop.





MAXXCROSS DESERT IT

TIRE SIZE	LOAD/SPEED RATING	OVERALL DIAMETER (INCH)	OVERALL WIDTH (INCH)	RIM SIZE (INCH)	TREAD DEPTH (INCH)
M7304D Front					
80/100-21	51M TT	28.0	3.7	1.60x21	17/32
90/100-21	57M TT	28.1	3.9	1.85x21	15/32
M7305D Rear					
110/100-18	64M TT	27.0	5.0	2.15x18	23/32
120/100-18	68M TT	27.5	5.3	2.50x18	23/32
110/80-19	59M TT	26.6	4.9	2.15x19	21/32
110/90-19	62M TT	27.2	5.0	2.15x19	21/32
120/80-19	63M TT	27.2	5.2	2.15x19	21/32
120/90-19	66M TT	28.1	5.3	2.15x19	23/32

- ✗ **STIFFER TIRE CARCASS DESIGN MINIMIZES FLEX, REDUCING THE CHANCE OF PINCHED TUBES**
- ✗ **TALL KNOB DESIGN IMPROVES TRACTION WHEN RACING IN SANDY CONDITIONS**
- ✗ **TREAD COMPOUND OPTIMIZED FOR LONGEVITY AND TO PERFORM IN A WIDE VARIETY OF DESERT TERRAINS**

Desert riding calls for a tire that can withstand high speeds and blistering heat. With a design based on the popular Maxxcross IT tread pattern, the Maxxcross Desert IT has a specially engineered compound that increases durability in rocky or desert conditions by reducing chipping and cutting.



DTR-1

TIRE SIZE	LOAD/SPEED RATING	OVERALL DIAMETER (INCH)	OVERALL WIDTH (INCH)	RIM SIZE (INCH)	TREAD DEPTH (INCH)
M7302 Front					
27.0x7.0-19 CD3	4PR TT	27.0	5.3	3.00x19	9/32
27.5x7.5-19 CD5	4PR TT	27.6	6.0	3.50x19	9/32
120/70-17 CD5	58V TL	24.1	4.7	2.75x17	6/32
27.5x7.5-19 CD3	4PR TT	27.6	6.0	3.50x19	9/32

- ✗ **AVAILABLE IN A VARIETY OF RACING COMPOUNDS:**
 - CD3 = SOFT COMPOUND
 - CD5 = MEDIUM COMPOUND
- ✗ **TUBE-TYPE TIRE ONLY**
- ✗ **NOT APPROVED FOR STREET OR HIGHWAY USE**

Ready to race? The Maxxis DTR-1 tire is specifically designed for dirt track racing. Available in multiple compound options, the DTR-1 gives riders an edge on the competition via its tread design, which provides superb traction and stability on any race track.

QUICK GUIDE



MAXXCROSS MX-SM

P. 7



MAXXCROSS MX-SI

P. 8



MAXXCROSS MX-IH

P. 8



MAXXCROSS MX-ST+

P. 9



MAXXCROSS SI

P. 10



MAXXCROSS IT

P. 11



MAXXCROSS DESERT IT

P. 13



DTR-1

P. 13

BRAND	VEHICLE	YEAR	FRONT			REAR			
			TREAD	SIZE	PART #	TREAD	SIZE	PART #	
Beta	RR 125 2 T	2022	M7332F Maxxcross MX-ST+	90/90-21	54R	ETM00236800	M7324 MaxxEnduro	120/90-18 65R	ETM83321100
	RR 200 2 T	2022	M7332F Maxxcross MX-ST+	90/90-21	54R	ETM00236800	M7324 MaxxEnduro	140/80-18 70R	ETM00232200
	RR 250 2 T	2022	M7332F Maxxcross MX-ST+	90/90-21	54R	ETM00236800	M7324 MaxxEnduro	140/80-18 70R	ETM00232200
	RR 300 2 T	2022	M7332F Maxxcross MX-ST+	90/90-21	54R	ETM00236800	M7324 MaxxEnduro	140/80-18 70R	ETM00232200
	RR 350 4 T	2022	M7332F Maxxcross MX-ST+	90/90-21	54R	ETM00236800	M7324 MaxxEnduro	140/80-18 70R	ETM00232200
	RR 390 4 T	2022	M7332F Maxxcross MX-ST+	90/90-21	54R	ETM00236800	M7324 MaxxEnduro	140/80-18 70R	ETM00232200
	RR 430 4 T	2022	M7332F Maxxcross MX-ST+	90/90-21	54R	ETM00236800	M7324 MaxxEnduro	140/80-18 70R	ETM00232200
GasGas	RR 480 4 T	2022	M7332F Maxxcross MX-ST+	90/90-21	54R	ETM00236800	M7324 MaxxEnduro	140/80-18 70R	ETM00232200
	MC-E3	2022	M7332F Maxxcross MX-ST+	60/100-10	33J	ETM00255300	M7332R Maxxcross MX-ST+	2.75-10 38J	ETM00256300
	MC-E5	2022	M7332F Maxxcross MX-ST+	60/100-12	36M	ETM00255000	M7332R Maxxcross MX-ST+	2.75-10 38J	ETM00256300
	MC50	2022	M7332F Maxxcross MX-ST+	60/100-12	36M	ETM00255000	M7332R Maxxcross MX-ST+	2.75-10 38J	ETM00256300
	MC65	2022	M7332F Maxxcross MX-ST+	60/100-14	30M	ETM00254900	M7332R Maxxcross MX-ST+	80/100-12 41M	ETM00256200
	MC85	2022	M7332F Maxxcross MX-ST+	70/100-17	40M	ETM00254800	M7332R Maxxcross MX-ST+	90/100-14 49M	ETM00256000
	MC85	2022	M7332F Maxxcross MX-ST+	70/100-19	42M	ETM00254700	M7332R Maxxcross MX-ST+	90/100-16 51M	ETM00255900
	MC125	2022	M7332F Maxxcross MX-ST+	80/100-21	51M	ETM00254600	M7332R Maxxcross MX-ST+	100/90-19 57M	ETM00255500
	MC250F	2022	M7332F Maxxcross MX-ST+	80/100-21	51M	ETM00254600	M7332R Maxxcross MX-ST+	110/90-19 62M	ETM00255400
	MC450F	2022	M7332F Maxxcross MX-ST+	80/100-21	51M	ETM00254600	M7332R Maxxcross MX-ST+	110/90-19 62M	ETM00255400
	EC 250 F	2022	M7332F Maxxcross MX-ST+	90/90-21	54R	ETM00367300	M7324 MaxxEnduro	140/80-18 70R	ETM00108700
	EC 350 F	2022	M7332F Maxxcross MX-ST+	90/90-21	54R	ETM00367300	M7324 MaxxEnduro	140/80-18 70R	ETM00108700
	EC 250	2022	M7332F Maxxcross MX-ST+	90/90-21	54R	ETM00367300	M7324 MaxxEnduro	140/80-18 70R	ETM00108700
	EC 300	2022	M7332F Maxxcross MX-ST+	90/90-21	54R	ETM00367300	M7324 MaxxEnduro	140/80-18 70R	ETM00108700
Husqvarna	EE-5	2022	M7332F Maxxcross MX-ST+	60/100-12	36M	ETM00255000	M7332R Maxxcross MX-ST+	2.75-10 38J	ETM00256300
	TC50	2022	M7332F Maxxcross MX-ST+	60/100-12	36M	ETM00255000	M7332R Maxxcross MX-ST+	2.75-10 38J	ETM00256300
	TC65	2022	M7332F Maxxcross MX-ST+	60/100-14	30M	ETM00254900	M7332R Maxxcross MX-ST+	80/100-12 41M	ETM00256200
	TC85	2022	M7332F Maxxcross MX-ST+	70/100-17	40M	ETM00254800	M7332R Maxxcross MX-ST+	90/100-14 49M	ETM00256000
	TC85	2022	M7332F Maxxcross MX-ST+	70/100-19	42M	ETM00254700	M7332R Maxxcross MX-ST+	90/100-16 52M	ETM00255900
KTM	790 Duke	2017	MA-ST2(J) Supermaxx ST	120/70ZR17	58W	ETM00040600	MA-ST2(G) Supermaxx ST	180/55ZR17 73W	ETM40039500
	SX-E 5	2022	M7332F Maxxcross MX-ST+	60/100-12	36M	ETM00255000	M7332R Maxxcross MX-ST+	2.75-10 38J	ETM00256300
	50SX Mini	2022	M7332F Maxxcross MX-ST+	60/100-12	36M	ETM00255000	M7332R Maxxcross MX-ST+	2.75-10 38J	ETM00256300
	50SX	2022	M7332F Maxxcross MX-ST+	60/100-12	36M	ETM00255000	M7332R Maxxcross MX-ST+	2.75-10 38J	ETM00256300
	65SX	2022	M7332F Maxxcross MX-ST+	60/100-14	30M	ETM00254900	M7332R Maxxcross MX-ST+	80/100-12 41M	ETM00256200
	85SX Kleinrad	2022	M7332F Maxxcross MX-ST+	70/100-17	40M	ETM00254800	M7332R Maxxcross MX-ST+	90/100-14 49M	ETM00256000
	85SX	2022	M7332F Maxxcross MX-ST+	70/100-19	42M	ETM00254700	M7332R Maxxcross MX-ST+	90/100-16 51M	ETM00255900
	Freeride 250	2022	M7319 Trailmaxx	2.75-21	45M	ETM89220000	M7320 Trailmaxx	4.00R18 64M	ETM66650000
	Freeride 350	2022	M7319 Trailmaxx	2.75-21	45M	ETM89220000	M7320 Trailmaxx	4.00R18 64M	ETM66650000
	Electric-XC	2022	M7319 Trailmaxx	2.75-21	45M	ETM89220000	M7320 Trailmaxx	4.00R18 64M	ETM66650000
	250 EXC-F	2022	M7332F Maxxcross MX-ST+	90/90-21	54R	ETM00367300	M7324 MaxxEnduro	140/80-18 70R	ETM00108700
	350 EXC-F	2022	M7332F Maxxcross MX-ST+	90/90-21	54R	ETM00367300	M7324 MaxxEnduro	140/80-18 70R	ETM00108700
	450 EXC-F	2022	M7332F Maxxcross MX-ST+	90/90-21	54R	ETM00367300	M7324 MaxxEnduro	140/80-18 70R	ETM00108700
	500 EXC-F	2022	M7332F Maxxcross MX-ST+	90/90-21	54R	ETM00367300	M7324 MaxxEnduro	140/80-18 70R	ETM00108700
	150 EXC-TPI	2022	M7332F Maxxcross MX-ST+	90/90-21	54R	ETM00367300	M7324 MaxxEnduro	140/80-18 70R	ETM00108700
	250 EXC-TPI	2022	M7332F Maxxcross MX-ST+	90/90-21	54R	ETM00367300	M7324 MaxxEnduro	140/80-18 70R	ETM00108700
	300 EXC-TPI	2022	M7332F Maxxcross MX-ST+	90/90-21	54R	ETM00367300	M7324 MaxxEnduro	140/80-18 70R	ETM00108700
	TM Racing	EN 125	2022	M7332F Maxxcross MX-ST+	90/90-21	54R	ETM00367300	M7324 MaxxEnduro	120/90-18 65R
EN 144		2022	M7332F Maxxcross MX-ST+	90/90-21	54R	ETM00367300	M7324 MaxxEnduro	120/90-18 65R	ETM00188400
EN 250		2022	M7332F Maxxcross MX-ST+	90/90-21	54R	ETM00367300	M7324 MaxxEnduro	140/80-18 70R	ETM00108700
EN 300		2022	M7332F Maxxcross MX-ST+	90/90-21	54R	ETM00367300	M7324 MaxxEnduro	140/80-18 70R	ETM00108700
EN 450		2022	M7332F Maxxcross MX-ST+	90/90-21	54R	ETM00367300	M7324 MaxxEnduro	140/80-18 70R	ETM00108700
MX 450		2022	M7332F Maxxcross MX-ST+	80/100-21	51M	ETM00254600	M7332R Maxxcross MX-ST+	110/90-19 62M	ETM00255400
MX 300		2022	M7332F Maxxcross MX-ST+	80/100-21	51M	ETM00254600	M7332R Maxxcross MX-ST+	110/90-19 62M	ETM00255400
MX 250		2022	M7332F Maxxcross MX-ST+	80/100-21	51M	ETM00254600	M7332R Maxxcross MX-ST+	110/90-19 62M	ETM00255400
MX 144		2022	M7332F Maxxcross MX-ST+	80/100-21	51M	ETM00254600	M7332R Maxxcross MX-ST+	100/90-19 57M	ETM00255500
MX 125		2022	M7332F Maxxcross MX-ST+	80/100-21	51M	ETM00254600	M7332R Maxxcross MX-ST+	100/90-19 57M	ETM00255500
MX 85 2T		2022	M7332F Maxxcross MX-ST+	70/100-17	40M	ETM00254800	M7332R Maxxcross MX-ST+	90/100-14 49M	ETM00256000
MX 85 2T		2022	M7332F Maxxcross MX-ST+	70/100-19	42M	ETM00254700	M7332R Maxxcross MX-ST+	90/100-16 51M	ETM00255900
BMW	CE 04	2022	MA-SC Supermaxx SC	120/70R15		ETM00059700	MA-SC Supermaxx SC	160/60R15	ETM00231000



MAXXIS